

Neonates with SARS-CoV-2 infection: spectrum of disease from a prospective nationwide observational cohort study

Petra Zimmermann^{abc}, Anita Uka^{ab}, Michael Buettcher^d, Yves Fougère^e, Margherita Plebani^e, Christa Relly^f, Hanna Schmid^g, Nicole Ritz^{dgh}, Swiss Paediatric Surveillance Unit (SPSU)

^a Department of Community Health, Faculty of Science and Medicine, University of Fribourg, Switzerland

^b Department of Paediatrics, Fribourg Hospital, Fribourg, Switzerland

^c Infectious Diseases Research Group, Murdoch Children's Research Institute, Parkville, Australia

^d Paediatrics and Paediatric Infectious Diseases, Children's Hospital Lucerne, Cantonal Hospital Lucerne, Switzerland

^e Pediatric Infectious Diseases and Vaccinology Unit, Department Women-Mother-Child, Lausanne University Hospital, Lausanne, Switzerland

^f Division of Infectious Diseases and Hospital Epidemiology, University Children's Hospital Zurich, Switzerland

^g Paediatric Infectious Diseases and Vaccinology, University of Basel Children's Hospital Basel, Switzerland

^h Department of Paediatrics, The Royal Children's Hospital Melbourne, The University of Melbourne, Australia

Summary

BACKGROUND: Coronavirus disease 2019 (COVID-19) can be more severe in infants than in older children. To date, only a few case series have reported data on neonates with COVID-19, including mostly asymptomatic neonates who were tested because of exposure to maternal SARS-CoV-2 infection. This study summarises nationwide epidemiological data, clinical characteristics, treatment and outcomes of neonates presenting with symptomatic SARS-CoV-2 infection.

METHODS: Data were prospectively collected through the Swiss Paediatric Surveillance Unit from hospitalised neonates with laboratory-confirmed SARS-CoV-2 infection (positive polymerase chain reaction on a respiratory sample) from 1 March 2020 to 31 September 2021. All 29 paediatric hospitals in Switzerland reported cases.

RESULTS: In total, 73 neonates were included; 7 (10%) were preterm. The median age at presentation was 17 days (interquartile range [IQR] 11–23); 40 (55%) were female. The majority of neonates (64, 88%) were admitted from home. Nine (12%) had a pre-existing medical condition. Overall, the most common symptom recorded was fever in 52 (71%), followed by rhinorrhoea or nasal congestion in 32 (44%) and respiratory distress in 19 (26%). Twenty (27%) neonates presented with fever without a source. Seven (10%) neonates were admitted to an intensive care unit (5 for respiratory failure and 2 for monitoring). One (1%) neonate required inotropic support. The median length of hospital stay in term neonates was 4 days (IQR 3–5). Two (3%) were treated with corticosteroids and 1 (1%) with remdesivir. In total, 60 (82%) neonates had contact with a known or suspected SARS-CoV-2 index case. All of the 71 neonates for whom data

were available were discharged to their homes without symptoms.

CONCLUSION: In neonates, COVID-19 mainly presents with fever, and symptoms of upper and lower respiratory tract infection. The clinical course is mostly mild, requiring a short period of hospitalisation. COVID-19 needs to be added as a differential diagnosis in neonates who present with fever without a source. However, the presence of SARS-CoV-2 should not deter from the search for a serious bacterial infection. Further data from surveillance studies are needed to better understand COVID-19 in neonates, guide therapy and to evaluate whether the clinical spectrum is changing with new SARS-CoV-2 variants.

Introduction

Coronavirus disease (COVID-19) is generally a mild disease in children [1–11]. Although, it has been reported that infants infected with severe acute respiratory syndrome coronavirus 2 (SARS-CoV-2) get more severely ill compared with older children [12–17], there are, however, only a few case series summarising the presentation and outcomes of neonates suffering from COVID-19. Most reports to date include mainly asymptomatic neonates who were tested because of exposure to maternal SARS-CoV-2 infection [6,12,18–24]. Approximately 2 to 5% of neonates born to women with COVID-19 during pregnancy are infected with SARS-CoV-2 [25–28]. Up to 60% of neonates infected in the first days after birth remain asymptomatic [19, 22–24]. If symptoms are reported, they include fever, respiratory distress, feeding difficulties and vomiting [19, 22–24]. Data on neonates infected with SARS-CoV-2 after the perinatal period is sparse. As fever and other infectious signs and symptoms in the first month of life trigger extensive investigations and empirical antibac-

Correspondence:

Dr Petra Zimmermann
Department of Community Health
Faculty of Science and Medicine
University of Fribourg
Route des Arsenalux 41
CH-1700 Fribourg
petra.zimmermann[at]unifr.ch

terial treatment, it is important to define the clinical characteristics and burden of neonatal COVID-19.

In this study, we summarised epidemiological data, clinical characteristics, treatment and outcomes of hospitalised neonates with symptomatic COVID-19 from a nationwide active surveillance system of SARS-CoV-2 infections in children. The inclusion only symptomatic neonates in our study clearly distinguishes our data from previous studies, which mostly included asymptomatic neonates who were exposed to infected mothers.

Methods

Study design and population

The study was designed as a prospective nationwide observational cohort study recording detailed epidemiological, clinical, therapeutic and outcome data of hospitalised neonates ≤ 28 days of age with laboratory-confirmed SARS-CoV-2 infection (a positive SARS-CoV-2 polymerase chain reaction [PCR] test on a respiratory sample). Neonates without symptoms were excluded from detailed analysis. Data were collected anonymously through the Swiss Paediatric Surveillance Unit (SPSU, <http://www.spsu.ch>) from 1 March 2020 to 31 September 2021. All 29 hospitals in Switzerland that have a paediatric and/or neonatology department participated and submitted cases monthly. Upon notification the investigators sent the reporting centres an electronic clinical report form through REDCap or in paper form (the questionnaire is provided in the appendix) [16]. If data were not submitted within one month a reminder was sent. Data were collected at one timepoint either during or after the hospitalisation. There was no outpatient follow-up. All data were reviewed by the investigators and further clarified with the reporting

physician when needed. All missing data are indicated were applicable. The study received ethics approval by the ethics committee (Ethikkommission Nordwest- und Zentralschweiz (EKNZ 2020-01130)). All collected data were anonymous, therefore according to the ethics approval no informed consent was necessary.

Statistical analysis

Continuous data are summarised using median, interquartile range (IQR), mean, standard deviation and range. Categorical data are presented as percentage. R (Version 1.2.5019) was used for designing figures.

Results

Study population

In total, 80 neonates were reported in our database. Four neonates were excluded from the analysis because they were entered in duplicate, two because they were asymptomatic and one because he was not hospitalised. Of the 73 neonates included, 7 (10%) were preterm (table 1). Forty (55%) were female. The median age of the neonates at presentation was 17 days (IQR 11–23) days. Most of the neonates were Caucasian (54, 74%), followed by Arabic (3, 4%), Black (3, 4%), Asian (2, 3%) and Hispanic (1, 1%). Ethnicity was not reported for 10 (14%) neonates. The majority of neonates (64, 88%) were admitted from home, 8 (11%) were transferred from another hospital and 1 (1%) preterm neonate was admitted from the delivery room. Nine (12%) neonates had a pre-existing medical condition (prematurity 7 [10%], trisomy 21 1 [1%], intrauterine growth restriction 1 [1%]).

Table 1:
Baseline characteristics of neonates with SARS-CoV-2 infection (n = 73).

Sex	Female, n (%)	40 (55)
Age at presentation in days	Median (IQR)	17 (11–23)
	Mean (SD; range)	17 (7; 1–28)
Gestational age at birth in weeks*	Median (IQR)	40+0 (38+4–40+6)
	Mean (SD; range)	39+1 (2+4; 29+1–41+4)
Birth weight in g**	Median (IQR)	3475 (3110–3625)
	Mean (SD; range)	3335 (610; 1300–4560)
Weight on admission in g	Median (IQR)	3700 (3400–4000)
	Mean (SD; range)	3680 (680; 1370–5200)
Ethnicity	Caucasian, n (%)	54 (74)
	Arabic, n (%)	3 (4)
	Black, n (%)	3 (4)
	Asian, n (%)	2 (3)
	Hispanic, n (%)	1 (1)
	Unknown, n (%)	11 (15)
Pre-existing medical condition	Total	9 (12)
	Prematurity, n (%)	7 (10)
	Trisomy 21, n (%)	1 (1)
	Intrauterine growth restriction, n (%)	1 (1)
Admitted from	Home, n (%)	64 (88)
	Other hospital, n (%)	8 (11)
	Delivery room, n (%)	1 (1)

* Data missing for one neonate

** Data missing for two neonates

IQR: interquartile range; SD: standard deviation

Symptoms

Overall, the most common symptom reported was fever, in 52 (71%), followed by rhinorrhoea or nasal congestion in 32 (44%) and respiratory distress in 19 (26%) (fig. 1). Further symptoms included feeding difficulties in 11 (15%), cough in 10 (14%), diarrhoea in 10 (14%), vomiting in 8 (11%), abdominal pain in 3 (4%), pharyngitis in 3 (4%), rash in 2 (3%) and jaundice in 1 (1%) neonate.

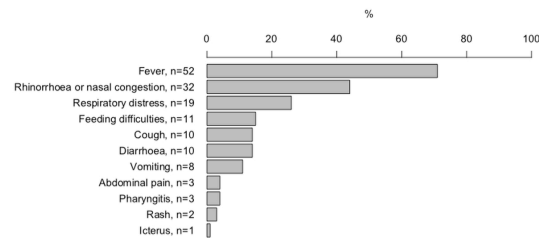
Fever was the only symptom in 20 (27%) neonates; all of these were admitted for fever of unknown source. A total of 20 (27%) neonates did not have fever, of these 13 presented with respiratory symptoms, 5 with gastrointestinal symptoms, and one each with feeding difficulties and rash.

Diagnostics

Seventy-two (99%) neonates had a positive SARS-CoV-2 PCR test on nasopharyngeal swab. One neonate did not have a nasopharyngeal swab and was diagnosed with positive PCR on tracheal aspiration. Two neonates additionally had a SARS-CoV-2 PCR test on tracheal aspirations, which was positive. In one neonate, a SARS-CoV-2 PCR test was done on stool, which was negative. No serology test was done.

A total of 44 (60%) neonates had further viruses tested on their nasopharyngeal swab; 4 tested positive for picornavirus. Ten (14%) had chest radiography (4 normal, 4 bi-

Figure 1: Distribution of symptoms in neonates with SARS-CoV-2 infection.



lateral changes, 1 unilateral changes and 1 preterm neonate with hyaline membrane disease). Six (8%) neonates had echocardiography, all of them were normal, apart from a patent foramen ovale in one neonate. All of the remaining tests were normal (lumbar puncture in 7 [10%], abdominal sonography in 2 [3%], cranial sonography in 1 [1%], cranial magnetic resonance imaging in 1 [1%]) (table 2).

Treatment

Seven neonates (10%, 5 term and 2 preterm) needed admission to an intensive care unit, 5 for respiratory failure and 2 for intensive monitoring. One (1%) neonate required inotropic support. The median length of hospital stay in term neonates was 4 days (IQR 3–5) and in preterm neonates 6 days (IQR 3–25) (table 3).

Of the 73 neonates, 17 (23%) needed supplementary oxygen, 4 (5%) high-flow oxygen, 5 (7%) noninvasive ventilation and 3 (4%) mechanical ventilation (table 3). Two (3%) neonates were treated with corticosteroids and 1 (1%) with remdesivir.

Complications and outcome

Two neonates were reported to have complications. One neonate suffered from central apnoea and one from a blood stream infection with *Streptococcus pneumoniae* and *Streptococcus salivarius* on admission (table 3). Two preterm neonates were still admitted at the time of data analysis, all other neonates were discharged to their homes without symptoms.

Transmission

In total, 60 neonates (73%) had contact with a person known or suspected to have a SARS-CoV-2 infection. The distribution is detailed in figure 2.

Table 2: Investigations in neonates with SARS-CoV-2 infection.

	n (%)
Nasopharyngeal swab for other viruses	43 (59)
– Negative	39
– Picornavirus	4
Chest radiography	10 (14)
– Normal	4
– Bilateral changes	4
– Unilateral changes	1
– Hyaline membrane disease	1
Echocardiography	6 (8)
– Normal	5
– Patent foramen ovale	1
Lumbar puncture	7 (10)
– Normal	6
– Mononuclear-predominate pleocytosis, SARS-CoV-2 PCR negative	1
Abdominal sonography	2 (3)
– Normal	2
Cranial sonography	1 (1)
– Normal	1
Cranial magnetic resonance imaging	1 (1)
– Normal	1

Discussion

This nationwide study presents data from active surveillance of symptomatic SARS-CoV-2 infection in neonates in Switzerland during periods when the original virus and alpha and delta variants were circulating. The inclusion of only symptomatic neonates in our study clearly distinguishes our data from previous studies, which mostly included asymptomatic neonates who were exposed to infected mothers [6, 12, 18–24]. Our cohort mainly presented with fever and symptoms of upper and lower respiratory tract infection. One quarter presented with fever without a source. Most neonates were exposed to a known index case. Strain-specific analysis of the data was not possible.

The findings from our study are in line with those from the currently largest review summarising 176 case reports of neonates with SARS-CoV-2 infection [29]. In this review, neonates also mainly presented with fever and respiratory symptoms. However, compared with our cohort, gastrointestinal symptoms were reported more frequently. This may be explained by the larger proportion of preterm-born neonates included, who often have feeding difficulties, even in the absence of an infection. In contrast to

our cohort of symptomatic neonates, the review included neonates who were tested because of exposure to maternal SARS-CoV-2 infection and almost half of them were asymptomatic. This likely explains the age difference at presentation, with a mean age of 5 days versus 17 days in our cohort. In the review, an estimated 30% of infections were vertical. In our study, we could not differentiate between vertically transmitted [30] or post-partum infection, but in 40% of neonates the mother was deemed to be the index case.

Fever and other infectious symptoms in the first month of life usually triggers careful clinical evaluation, extensive investigations, empirical antibacterial treatment and hospital admission. Based on our findings, the differential diagnosis of COVID-19 needs to be added as a possible cause of fever without source for this young age group. It has recently been reported that approximately 15% of infants less than 90 days of age admitted for investigations because of fever are diagnosed with a SARS-CoV-2 infection [31]. However, the detection of SARS-CoV-2 should not preclude further investigations for possible bacterial infection, as shown in our study where one neonate with SARS-CoV-2 infection was bacteraemic with *Streptococcus pneumoniae* on admission. Similarly, three other studies including infants up to the age of 90 days, although not frequently, also reported bacteraemia and urinary tract infections in infants who tested positive for SARS-CoV-2 [31–33]. Of note, although four neonates with COVID-19 also tested positive for picornavirus, we did not find any co-infections with respiratory syncytial virus or influenza.

The rate of admission to an intensive care unit in term neonates with SARS-CoV-2 infection found in our study is similar to the rates reported in older children (2 to 13%) [1, 7, 8, 34, 35]. In the above mentioned review of case reports of neonates with SARS-CoV-2 infection a larger proportion of neonates were admitted to intensive care; this is likely due to the higher proportion of preterm

Figure 2: Exposure to known or suspected SARS-CoV-2-infected cases in 73 neonates.

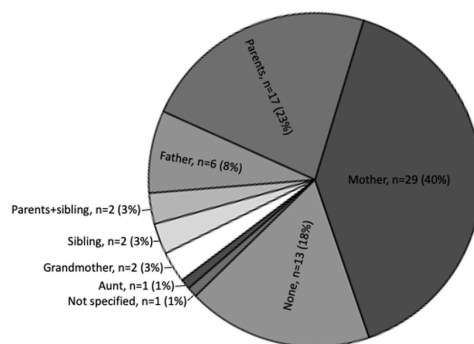


Table 3:

Admission, treatment and complications in neonates with SARS-CoV-2 infection.

	Term, n = 66	Preterm, n = 7
Length of hospital stay in days		
– Median (IQR)	4 (3–5)	6 (3–25)*
– Mean (SD; range)	5 (5; 2–35)	12 (6; 2–35)*
Admission to intensive care unit, n (%)	5 (8)	2 (29)
– Respiratory failure	3	2
– Monitoring	2	0
Oxygen, n (%)	14 (21)	3 (43)
– Median duration in days (IQR)	2 (1–3)	nc
– Mean duration in days (SD; range)	4 (6; 1–18)	nc (nc; 1–9)
High-flow oxygen, n (%)	4 (6)	0
Noninvasive ventilation, n (%)	3 (5)	2 (29)
Mechanical ventilation, n (%)	1 (2)	2 (29)
Inotropic support, n (%)	1 (2)	0
Corticosteroids, n (%)	2 (3)	0
Remdesivir, n (%)	1 (2)	0
Complications	2 (3)	0
– Central apnoea, n (%)	1 (2)	0
– Blood stream infection with <i>Strep. pneumoniae</i> and <i>Strep. salivarius</i> , n (%)	1 (2)	0

IQR: interquartile range; nc: not calculable; SD: standard deviation

* 2 preterm neonates not included as they were still admitted at the time of data analysis.

neonates included [29]. Antiviral or anti-inflammatory treatment was rarely required and complications were rare. The strengths of our study are the multicentre nationwide study design and the availability of detailed epidemiological and clinical data on symptomatic preterm and term neonates. The limitations include the fact that for infants born preterm it is difficult to distinguish between symptoms attributable to COVID-19 or to prematurity, as well as the lack of laboratory values and long-term follow-up data. Furthermore, we did not have strain-specific data.

Conclusion

In neonates, COVID-19 mainly presents with fever, and symptoms of upper and lower respiratory tract infection. The clinical course is mostly mild, requiring a short duration of hospitalisation. COVID-19 needs to be added as a differential diagnosis in neonates who present with fever without a source. However, detecting SARS-CoV-2 infection should not deter from the search for a serious bacterial infection in a neonate. A small proportion of hospitalised neonates requires admission to an intensive care unit.

Further data from surveillance studies are needed to better understand COVID-19 in neonates, guide therapy and to evaluate whether the clinical spectrum is changing with new SARS-CoV-2 variants.

Availability of data and material

Data collected for the study and the study protocol will be made available to others on request.

Acknowledgments

We thank the representatives of the paediatric units in Switzerland: M. Albisetti; V. Bernet; C. Betti; F. Cachat; P. Caplazi; M-L. Decker; E. Durrer; S. Fluri; M. Gebauer; M. Gehri; E. Giannoni; S. Grupe; M. Horn; A. L'Huillier; T. Karen; E. Kellner; L. Kottanattu; G. Laube; B. Laubscher; J. Llor; F. Luterbacher; H. Madlon; A. Malzacher; M. Martins; J. McDougall; A. Merglen; S. Minocchieri; V. Muehlethaler; T. Neuhaus; A. Niederer; S. Nikorelou; M. Plebani; Ratnasabapathy; T. Riedel; M. Russo; H. Schmid; K. Staudacher; M. Torres Escobar; J. Wildhaber; A. Wörner; A. Zemmouri

We would also like to acknowledge the administrative support by Daniela Beeli, Mirjam Mäusezahl and Fabien Tschagellar, from the Federal Office of Public Health Switzerland.

Authors' contributions: PZ, AU and NR designed the study, did the data analysis and wrote the first draft. All authors revised the manuscript and approved the final draft.

Financial disclosure

The study was supported by the Swiss Federal Office of Public Health and has received grants from the Swiss Society of Paediatrics and the Paediatric Infectious Disease Group of Switzerland.

Potential competing interests

All authors have completed and submitted the International Committee of Medical Journal Editors form for disclosure of potential conflicts of interest. No potential conflict of interest was disclosed.

References

- Göttinger F, Santiago-García B, Noguera-Julian A, Lanaspá M, Lancel-la L, Calò Carducci FI, et al.; ptbnet COVID-19 Study Group. COVID-19 in children and adolescents in Europe: a multinational, multicentre cohort study. *Lancet Child Adolesc Health*. 2020 Sep;4(9):653–61. [http://dx.doi.org/10.1016/S2352-4642\(20\)30177-2](http://dx.doi.org/10.1016/S2352-4642(20)30177-2). PubMed. 2352-4650
- Zimmermann P, Curtis N. Coronavirus Infections in Children Including COVID-19: An Overview of the Epidemiology, Clinical Features, Diagnosis, Treatment and Prevention Options in Children. *Pediatr Infect Dis J*. 2020 May;39(5):355–68. <http://dx.doi.org/10.1097/INF.0000000000002660>. PubMed. 1532-0987
- Castagnoli R, Votto M, Licari A, Brambilla I, Bruno R, Perlini S, et al. Severe Acute Respiratory Syndrome Coronavirus 2 (SARS-CoV-2) Infection in Children and Adolescents: A Systematic Review. *JAMA Pediatr*. 2020 Sep;174(9):882–9. <http://dx.doi.org/10.1001/jamapediatrics.2020.1467>. PubMed. 2168-6211
- Ludvigsson JF. Systematic review of COVID-19 in children shows milder cases and a better prognosis than adults. *Acta Paediatr*. 2020 Jun;109(6):1088–95. <http://dx.doi.org/10.1111/apa.15270>. PubMed. 1651-2227
- Zimmermann P, Curtis N. Why is COVID-19 less severe in children? A review of the proposed mechanisms underlying the age-related difference in severity of SARS-CoV-2 infections. *Arch Dis Child. Forthcoming* 2020 Dec;archdischild-2020-320338. PubMed. 1468-2044
- Zimmermann P, Curtis N. COVID-19 in Children, Pregnancy and Neonates: A Review of Epidemiologic and Clinical Features. *Pediatr Infect Dis J*. 2020 Jun;39(6):469–77. <http://dx.doi.org/10.1097/INF.0000000000002700>. PubMed. 1532-0987
- Uka A, Buettcher M, Bernhard-Stimemann S, et al. Factors associated with hospital and intensive care admission in paediatric SARS-CoV-2 infection: a prospective nationwide observational cohort study. *Eur J Pediatr*. Forthcoming 2021. PubMed. 0340-6199
- Ward JL, Harwood R, Smith C, et al. Risk factors for intensive care admission and death amongst children and young people admitted to hospital with COVID-19 and PIMS-TS in England during the first pandemic year. medRxiv 2021:2021.07.01.21259785. <http://dx.doi.org/10.1101/2021.07.01.21259785>.
- WHO. COVID-19 detailed surveillance data dashboard. (accessed 27 July 2021 at <https://covid19.who.int>)
- Stokes EK, Zambrano LD, Anderson KN, Marder EP, Raz KM, El Burai Felix S, et al. Coronavirus Disease 2019 Case Surveillance - United States, January 22-May 30, 2020. *MMWR Morb Mortal Wkly Rep*. 2020 Jun;69(24):759–65. <http://dx.doi.org/10.15585/mmwr.mm6924e2>. PubMed. 1545-861X
- Zimmermann P, Curtis N. Why is COVID-19 less severe in children? A review of the proposed mechanisms underlying the age-related difference in severity of SARS-CoV-2 infections. *Arch Dis Child*. 2020 Dec;archdischild-2020-320338.; Online ahead of print. PubMed. 1468-2044
- Liguoro I, Pilotto C, Bonanni M, Ferrari ME, Pusioli A, Nocerino A, et al. SARS-COV-2 infection in children and newborns: a systematic review. *Eur J Pediatr*. 2020 Jul;179(7):1029–46. <http://dx.doi.org/10.1007/s00431-020-03684-7>. PubMed. 1432-1076
- Dong Y, Mo X, Hu Y, Qi X, Jiang F, Jiang Z, et al. Epidemiology of COVID-19 Among Children in China. *Pediatrics*. 2020 Jun;145(6):e20200702. <http://dx.doi.org/10.1542/peds.2020-0702>. PubMed. 1098-4275
- Parri N, Lenge M, Buonsenso D; Coronavirus Infection in Pediatric Emergency Departments (CONFIDENCE) Research Group. Children with Covid-19 in Pediatric Emergency Departments in Italy. *N Engl J Med*. 2020 Jul;383(2):187–90. <http://dx.doi.org/10.1056/NEJMc2007617>. PubMed. 1533-4406
- Tagarro A, Epalza C, Santos M, et al. Screening and Severity of Coronavirus Disease 2019 (COVID-19) in Children in Madrid, Spain. *JAMA Pediatr* 2020.
- Liu W, Zhang Q, Chen J, Xiang R, Song H, Shu S, et al. Detection of Covid-19 in Children in Early January 2020 in Wuhan, China. *N Engl J Med*. 2020 Apr;382(14):1370–1. <http://dx.doi.org/10.1056/NEJMc2003717>. PubMed. 1533-4406
- Bialek S, Gierke R, Hughes M, McNamara LA, Pilishvili T, Skoff T; CDC COVID-19 Response Team. Coronavirus Disease 2019 in Children - United States, February 12-April 2, 2020. *MMWR Morb Mortal Wkly Rep*. 2020 Apr;69(14):422–6. <http://dx.doi.org/10.15585/mmwr.mm6914e4>. PubMed. 1545-861X
- Mullins E, Hudak ML, Banerjee J, Getzlaff T, Townson J, Barnette K, et al.; PAN-COVID investigators and the National Perinatal COVID-19 Registry Study Group. Pregnancy and neonatal outcomes of COVID-19: coreporting of common outcomes from PAN-COVID and AAP-SONPM registries. *Ultrasound Obstet Gynecol*. 2021 Apr;57(4):573–81. <http://dx.doi.org/10.1002/uog.23619>. PubMed. 1469-0705
- Bellos I, Pandita A, Panza R. Maternal and perinatal outcomes in pregnant women infected by SARS-CoV-2: A meta-analysis. *Eur J Obstet Gynecol Reprod Biol*. 2021 Jan;256:194–204. <http://dx.doi.org/10.1016/j.ejogrb.2020.11.038>. PubMed. 1872-7654
- Alipour Z, Samadi P, Eskandari N, Ghaedrahmati M, Vahedian M, Khalajinia Z, et al. Relationship between coronavirus disease 2019 in pregnancy and maternal and fetal outcomes: retrospective analytical cohort

- study. *Midwifery*. 2021 Nov;102:103128. <http://dx.doi.org/10.1016/j.midw.2021.103128>. PubMed. 1532-3099
21. Al-Lawama M, Badran E, Ghanim N, Irsheid A, Qtaishat H, Al-Amouri I, et al. Perinatal Transmission and Clinical Outcomes of Neonates Born to SARS-CoV-2-Positive Mothers. *J Clin Med Res*. 2021 Aug;13(8):420–4. <http://dx.doi.org/10.14740/jocmr4578>. PubMed. 1918-3003
 22. Juan J, Gil MM, Rong Z, Zhang Y, Yang H, Poon LC. Effect of coronavirus disease 2019 (COVID-19) on maternal, perinatal and neonatal outcome: systematic review. *Ultrasound Obstet Gynecol*. 2020 Jul;56(1):15–27. <http://dx.doi.org/10.1002/uog.22088>. PubMed. 1469-0705
 23. Sánchez-Luna M, Fernández Colomer B, de Alba Romero C, Alarcón Allen A, Baña Souto A, Camba Longueira F, et al.; SENE COVID-19 Registry Study Group. Neonates Born to Mothers With COVID-19: Data From the Spanish Society of Neonatology Registry. *Pediatrics*. 2021 Feb;147(2):147. <http://dx.doi.org/10.1542/peds.2020-015065>. PubMed. 1098-4275
 24. Farghaly MA, Kupferman F, Castillo F, Kim RM. Characteristics of Newborns Born to SARS-CoV-2-Positive Mothers: A Retrospective Cohort Study. *Am J Perinatol*. 2020 Nov;37(13):1310–6. <http://dx.doi.org/10.1055/s-0040-1715862>. PubMed. 1098-8785
 25. Shalish W, Lakshminrusimha S, Manzoni P, Keszler M, Sant'Anna GM. COVID-19 and Neonatal Respiratory Care: Current Evidence and Practical Approach. *Am J Perinatol*. 2020 Jun;37(8):780–91. <http://dx.doi.org/10.1055/s-0040-1710522>. PubMed. 1098-8785
 26. Barrero-Castillero A, Beam KS, Bernardini LB, Ramos EG, Davenport PE, Duncan AR, et al.; Harvard Neonatal-Perinatal Fellowship COVID-19 Working Group. COVID-19: neonatal-perinatal perspectives. *J Perinatol*. 2021 May;41(5):940–51. <http://dx.doi.org/10.1038/s41372-020-00874-x>. PubMed. 1476-5543
 27. Angelidou A, Sullivan K, Melvin PR, Shui JE, Goldfarb IT, Bartolome R, et al. Association of Maternal Perinatal SARS-CoV-2 Infection With Neonatal Outcomes During the COVID-19 Pandemic in Massachusetts. *JAMA Netw Open*. 2021 Apr;4(4):e217523. <http://dx.doi.org/10.1001/jamanetworkopen.2021.7523>. PubMed. 2574-3805
 28. Allotey J, Stallings E, Bonet M, Yap M, Chatterjee S, Kew T, et al.; for PregCOV-19 Living Systematic Review Consortium. Clinical manifestations, risk factors, and maternal and perinatal outcomes of coronavirus disease 2019 in pregnancy: living systematic review and meta-analysis. *BMJ*. 2020 Sep;370:m3320. <http://dx.doi.org/10.1136/bmj.m3320>. PubMed. 1756-1833
 29. Raschetti R, Vivanti AJ, Vauloup-Fellous C, Loi B, Benachi A, De Luca D. Synthesis and systematic review of reported neonatal SARS-CoV-2 infections. *Nat Commun*. 2020 Oct;11(1):5164. <http://dx.doi.org/10.1038/s41467-020-18982-9>. PubMed. 2041-1723
 30. World Health Association. Definition and categorization of the timing of mother-to-child transmission of SARS-CoV-2. (accessed 22 February 2021 at https://urldefense.com/v3/_https://www.who.int/publications/i/item/WHO-2019-nCoV-mother-to-child-transmission-2021.1_!!Dc8iu7o!hcW8vbYo89O-c-KELcz2o5Gd4aP-cl74tcij7brMBoa7QaU7Kah76lBGCgUrtOhzSiKFmpgS)
 31. Paret M, Lalani K, Hedari C, Jaffer A, Narayanan N, Noor A, et al. SARS-CoV-2 Among Infants <90 Days of Age Admitted for Serious Bacterial Infection Evaluation. *Pediatrics*. 2021 Oct;148(4):148. <http://dx.doi.org/10.1542/peds.2020-044685>. PubMed. 1098-4275
 32. Blázquez-Gamero D, Epalza C, Cadenas JA, Gero LC, Calvo C, Rodríguez-Molino P, et al. Fever without source as the first manifestation of SARS-CoV-2 infection in infants less than 90 days old. *Eur J Pediatr*. 2021 Jul;180(7):2099–106. <http://dx.doi.org/10.1007/s00431-021-03973-9>. PubMed. 1432-1076
 33. Mithal LB, Machut KZ, Muller WJ, Kociolek LK. SARS-CoV-2 Infection in Infants Less than 90 Days Old. *J Pediatr*. 2020 Sep;224:150–2. <http://dx.doi.org/10.1016/j.jpeds.2020.06.047>. PubMed. 1097-6833
 34. Lu X, Zhang L, Du H, Zhang J, Li YY, Qu J, et al.; Chinese Pediatric Novel Coronavirus Study Team. SARS-CoV-2 Infection in Children. *N Engl J Med*. 2020 Apr;382(17):1663–5. <http://dx.doi.org/10.1056/NEJMc2005073>. PubMed. 1533-4406
 35. Bhuiyan MU, Stiboy E, Hassan MZ, Chan M, Islam MS, Haider N, et al. Epidemiology of COVID-19 infection in young children under five years: A systematic review and meta-analysis. *Vaccine*. 2021 Jan;39(4):667–77. <http://dx.doi.org/10.1016/j.vaccine.2020.11.078>. PubMed. 1873-2518

SPSU: SARS-CoV-2 Infection in Children PID 33

[Project Home](#)
[Project Setup](#)
[Online Designer](#)
[Data Dictionary](#)
[Codebook](#)

Data Dictionary Codebook

11-08-2021 20:37

[^ Collapse all instruments](#)

#	Variable / Field Name	Field Label <i>Field Note</i>	Field Attributes (Field Type, Validation, Choices, Calculations, etc.)																																																										
Instrument: SARS-CoV-2 Infection Questionnaire (sarscov2_infection_questionnaire)			Enabled as survey ^ Collapse																																																										
1	record_id	Record ID	text																																																										
2	hosp	Section Header: <i>Baseline data</i> Reporting hospital	dropdown, Required <table border="1" style="width: 100%; border-collapse: collapse;"> <tr><td>1</td><td>Aarau (Code SPSU: 3123)</td></tr> <tr><td>2</td><td>Baden (Code SPSU 1139)</td></tr> <tr><td>3</td><td>Basel (Code SPSU 1121)</td></tr> <tr><td>4</td><td>Bern (Code SPSU 3117)</td></tr> <tr><td>5</td><td>Biel (Code SPSU 1114)</td></tr> <tr><td>6</td><td>Centre hospitalier Rennaz (Aigle, Meryin, Vevey) (Code SPSU 2108)</td></tr> <tr><td>7</td><td>Chur (Code SPSU 1129)</td></tr> <tr><td>8</td><td>Delémont (Code SPSU 2115)</td></tr> <tr><td>9</td><td>Fribourg (Code SPSU 2107)</td></tr> <tr><td>10</td><td>Genève (Code SPSU 2104)</td></tr> <tr><td>11</td><td>CHUV, Lausanne (Code SPSU 2202)</td></tr> <tr><td>12</td><td>Hôpital de l'Enfance, Lausanne (Code SPSU 2101)</td></tr> <tr><td>13</td><td>Istituto Pediatrico della Svizzera Italiana (Bellinzona, Locarno, Lugano) (Code SPSU 3125)</td></tr> <tr><td>14</td><td>Luzern (Code SPSU 1124)</td></tr> <tr><td>15</td><td>Morges (Code SPSU 2103)</td></tr> <tr><td>16</td><td>Münsterlingen (Code SPSU 1136)</td></tr> <tr><td>17</td><td>Neonatologie, Universitäts-Kinderklinik, Bern (Code SPSU 3118)</td></tr> <tr><td>18</td><td>Neonatologie, Frauenklinik, Kantonsspital, St. Gallen (Code SPSU 1138)</td></tr> <tr><td>19</td><td>Neonatologie, Dép. Femme-Mère-Enfant, CHUV (Code SPSU 2102)</td></tr> <tr><td>20</td><td>Neonatologie, Universitäts-Frauenklinik, Zürich (Code SPSU 3134)</td></tr> <tr><td>21</td><td>Neuchâtel (Code SPSU 2112)</td></tr> <tr><td>22</td><td>St. Gallen (Code SPSU 3117)</td></tr> <tr><td>23</td><td>Sion (Code SPSU 2111)</td></tr> <tr><td>24</td><td>Visp (Code SPSU 1119)</td></tr> <tr><td>25</td><td>Winterthur (Code SPSU 3135)</td></tr> <tr><td>26</td><td>Yverdon (Code SPSU 4106)</td></tr> <tr><td>27</td><td>Zollikerberg (Code SPSU 3131)</td></tr> <tr><td>28</td><td>Universitäts-Kinderklinik, Zürich (Code SPSU 3132)</td></tr> <tr><td>29</td><td>Spital Triemli, Zürich (Code SPSU 3133)</td></tr> </table>	1	Aarau (Code SPSU: 3123)	2	Baden (Code SPSU 1139)	3	Basel (Code SPSU 1121)	4	Bern (Code SPSU 3117)	5	Biel (Code SPSU 1114)	6	Centre hospitalier Rennaz (Aigle, Meryin, Vevey) (Code SPSU 2108)	7	Chur (Code SPSU 1129)	8	Delémont (Code SPSU 2115)	9	Fribourg (Code SPSU 2107)	10	Genève (Code SPSU 2104)	11	CHUV, Lausanne (Code SPSU 2202)	12	Hôpital de l'Enfance, Lausanne (Code SPSU 2101)	13	Istituto Pediatrico della Svizzera Italiana (Bellinzona, Locarno, Lugano) (Code SPSU 3125)	14	Luzern (Code SPSU 1124)	15	Morges (Code SPSU 2103)	16	Münsterlingen (Code SPSU 1136)	17	Neonatologie, Universitäts-Kinderklinik, Bern (Code SPSU 3118)	18	Neonatologie, Frauenklinik, Kantonsspital, St. Gallen (Code SPSU 1138)	19	Neonatologie, Dép. Femme-Mère-Enfant, CHUV (Code SPSU 2102)	20	Neonatologie, Universitäts-Frauenklinik, Zürich (Code SPSU 3134)	21	Neuchâtel (Code SPSU 2112)	22	St. Gallen (Code SPSU 3117)	23	Sion (Code SPSU 2111)	24	Visp (Code SPSU 1119)	25	Winterthur (Code SPSU 3135)	26	Yverdon (Code SPSU 4106)	27	Zollikerberg (Code SPSU 3131)	28	Universitäts-Kinderklinik, Zürich (Code SPSU 3132)	29	Spital Triemli, Zürich (Code SPSU 3133)
1	Aarau (Code SPSU: 3123)																																																												
2	Baden (Code SPSU 1139)																																																												
3	Basel (Code SPSU 1121)																																																												
4	Bern (Code SPSU 3117)																																																												
5	Biel (Code SPSU 1114)																																																												
6	Centre hospitalier Rennaz (Aigle, Meryin, Vevey) (Code SPSU 2108)																																																												
7	Chur (Code SPSU 1129)																																																												
8	Delémont (Code SPSU 2115)																																																												
9	Fribourg (Code SPSU 2107)																																																												
10	Genève (Code SPSU 2104)																																																												
11	CHUV, Lausanne (Code SPSU 2202)																																																												
12	Hôpital de l'Enfance, Lausanne (Code SPSU 2101)																																																												
13	Istituto Pediatrico della Svizzera Italiana (Bellinzona, Locarno, Lugano) (Code SPSU 3125)																																																												
14	Luzern (Code SPSU 1124)																																																												
15	Morges (Code SPSU 2103)																																																												
16	Münsterlingen (Code SPSU 1136)																																																												
17	Neonatologie, Universitäts-Kinderklinik, Bern (Code SPSU 3118)																																																												
18	Neonatologie, Frauenklinik, Kantonsspital, St. Gallen (Code SPSU 1138)																																																												
19	Neonatologie, Dép. Femme-Mère-Enfant, CHUV (Code SPSU 2102)																																																												
20	Neonatologie, Universitäts-Frauenklinik, Zürich (Code SPSU 3134)																																																												
21	Neuchâtel (Code SPSU 2112)																																																												
22	St. Gallen (Code SPSU 3117)																																																												
23	Sion (Code SPSU 2111)																																																												
24	Visp (Code SPSU 1119)																																																												
25	Winterthur (Code SPSU 3135)																																																												
26	Yverdon (Code SPSU 4106)																																																												
27	Zollikerberg (Code SPSU 3131)																																																												
28	Universitäts-Kinderklinik, Zürich (Code SPSU 3132)																																																												
29	Spital Triemli, Zürich (Code SPSU 3133)																																																												

			30 Neonatology Bern (Code SPSU 3118)
3	phys	Reporting physician <i>Please write your name in the box</i>	text, Required
4	age	Age for children ≥ 1 month <i>Please specify years and months, e.g. 2 years and 11 months = 2/11</i>	text
5	age_neo	Age for children < 1 month <i>Please specify the age in days</i>	text (number)
6	gest_age	Gestational age at birth if child is less than 1 year of age <i>Please specify weeks and days, e.g. 38/5</i>	text
7	bweight <i>Show the field ONLY if: [age_neo] > 0</i>	Birth weight in gram	text (number, Min: 1000, Max: 7000), Required
8	sex	Sex	radio, Required 0 Male 1 Female
9	weight	Current weight in kg <i>e.g. 14.5</i>	text (number)
10	length	Current height in cm <i>e.g. 123, if you don't know the height you can leave the field empty</i>	text (integer)
11	country	Country of birth	dropdown, Required 1 Switzerland 2 Germany 3 Italy 4 France 5 Other 6 Unknown
12	country_other <i>Show the field ONLY if: [country] = '5'</i>	Which other country	text, Required
13	ethnic	Ethnicity	radio, Required 1 Caucasian 2 Black 3 Asian 4 Arabic 5 Hispanic 6 Other
14	ethnic_other <i>Show the field ONLY if: [ethnic] = '6'</i>	Which other ethnicity	text, Required
15	migr	Migrant/asylum-seeker	yesno, Required 1 Yes 0 No
16	migr_count <i>Show the field ONLY if: [migr] = '1'</i>	Specify country of origin	dropdown, Required 1 Eritrea 2 Syria 3 Afghanistan 4 Turkey 5 Georgia 6 Other
17	migr_count_other <i>Show the field ONLY if:</i>	Which other country of origin	text, Required

	[migr_count] = '6'																							
18	preexist <i>Show the field ONLY if: [preexist(1)] = '1'</i>	Pre-existing medical conditions <i>You can choose several answers if needed</i>	checkbox, Required <table border="1"> <tr> <td>0</td> <td>preexist__0</td> <td>None</td> </tr> <tr> <td>1</td> <td>preexist__1</td> <td>Respiratory disease</td> </tr> <tr> <td>2</td> <td>preexist__2</td> <td>Immunodeficiency</td> </tr> <tr> <td>3</td> <td>preexist__3</td> <td>Cardiovascular disease</td> </tr> <tr> <td>4</td> <td>preexist__4</td> <td>Haematological/oncological disease</td> </tr> <tr> <td>5</td> <td>preexist__5</td> <td>Diabetes</td> </tr> <tr> <td>99</td> <td>preexist__99</td> <td>Other</td> </tr> </table>	0	preexist__0	None	1	preexist__1	Respiratory disease	2	preexist__2	Immunodeficiency	3	preexist__3	Cardiovascular disease	4	preexist__4	Haematological/oncological disease	5	preexist__5	Diabetes	99	preexist__99	Other
0	preexist__0	None																						
1	preexist__1	Respiratory disease																						
2	preexist__2	Immunodeficiency																						
3	preexist__3	Cardiovascular disease																						
4	preexist__4	Haematological/oncological disease																						
5	preexist__5	Diabetes																						
99	preexist__99	Other																						
19	resp_dis <i>Show the field ONLY if: [preexist(1)] = '1'</i>	Which respiratory disease	text, Required																					
20	immu_dis <i>Show the field ONLY if: [preexist(2)] = '1'</i>	Which immunodeficiency	text, Required																					
21	cardio_dis <i>Show the field ONLY if: [preexist(3)] = '1'</i>	Which cardiovascular disease	text, Required																					
22	diab_dis <i>Show the field ONLY if: [preexist(5)] = '1'</i>	Which type of diabetes	text, Required																					
23	other_dis <i>Show the field ONLY if: [preexist(99)] = '1'</i>	Which other disease	text, Required																					
24	hemonc_dis <i>Show the field ONLY if: [preexist(4)] = '1'</i>	Which haematological/oncological disease	text, Required																					
25	hemonc_dis_date <i>Show the field ONLY if: [preexist(4)] = '1'</i>	Date of diagnosis of haematological/oncological disease	text (date_dmy), Required																					
26	hemonc_prot <i>Show the field ONLY if: [preexist(4)] = '1'</i>	Specify treatment protocol of patient at time of SARS-CoV-2 diagnosis (e.g. AIEOP/BFM 2017 ect.)	text, Required																					
27	hemonc_phase <i>Show the field ONLY if: [preexist(4)] = '1'</i>	Specify current treatment phase (e.g. induction or consolidation)	text, Required																					
28	hemonc_sct <i>Show the field ONLY if: [preexist(4)] = '1'</i>	Stem cell transplant	radio, Required <table border="1"> <tr> <td>0</td> <td>No/not applicable</td> </tr> <tr> <td>1</td> <td>Yes, autologous</td> </tr> <tr> <td>2</td> <td>Yes, allogenic</td> </tr> </table>	0	No/not applicable	1	Yes, autologous	2	Yes, allogenic															
0	No/not applicable																							
1	Yes, autologous																							
2	Yes, allogenic																							
29	hemonc_sct_date <i>Show the field ONLY if: [hemonc_sct] = '1' or [hemonc_sct] = '2'</i>	Date of stem cell transplant	text (date_dmy), Required																					
30	immu_drug	Immunosuppressive drugs (at SARS-CoV-2 diagnosis) <i>You can choose several answers if needed</i>	checkbox, Required <table border="1"> <tr> <td>0</td> <td>immu_drug__0</td> <td>No</td> </tr> <tr> <td>1</td> <td>immu_drug__1</td> <td>Corticosteroids</td> </tr> <tr> <td>2</td> <td>immu_drug__2</td> <td>Biologicals</td> </tr> <tr> <td>3</td> <td>immu_drug__3</td> <td>Chemotherapy</td> </tr> <tr> <td>4</td> <td>immu_drug__4</td> <td>Other (e.g. cyclosporin, tacrolimus, mycophenolate,</td> </tr> </table>	0	immu_drug__0	No	1	immu_drug__1	Corticosteroids	2	immu_drug__2	Biologicals	3	immu_drug__3	Chemotherapy	4	immu_drug__4	Other (e.g. cyclosporin, tacrolimus, mycophenolate,						
0	immu_drug__0	No																						
1	immu_drug__1	Corticosteroids																						
2	immu_drug__2	Biologicals																						
3	immu_drug__3	Chemotherapy																						
4	immu_drug__4	Other (e.g. cyclosporin, tacrolimus, mycophenolate,																						

				ect.)										
31	immu_drug_steroid_name <i>Show the field ONLY if: [immu_drug(1)] = '1'</i>	Name of corticosteroid		text										
32	immu_drug_steroid_dose <i>Show the field ONLY if: [immu_drug(1)] = '1'</i>	Dose of corticosteroid in mg		text (number)										
33	immu_drug_steroid_interval <i>Show the field ONLY if: [immu_drug(1)] = '1'</i>	Time interval corticosteroids given <i>Please specify times a day or week, ect.</i>		text (number)										
34	immu_drug_biol_name <i>Show the field ONLY if: [immu_drug(2)] = '1'</i>	Specify name, dose and interval of each biological		notes										
35	immu_drug_chem <i>Show the field ONLY if: [immu_drug(3)] = '1'</i>	Specify each drug of the chemotherapy with name, dose and interval		notes										
36	immu_drug_other <i>Show the field ONLY if: [immu_drug(4)] = '1'</i>	Specify each drug with name, dose and interval		notes										
37	covid_vac	Has the patient received a COVID vaccine?		radio, Required <table border="1"> <tr><td>0</td><td>No</td></tr> <tr><td>1</td><td>One dose</td></tr> <tr><td>2</td><td>Two doses</td></tr> <tr><td>3</td><td>More than 2 doses</td></tr> <tr><td>4</td><td>Unknown</td></tr> </table>	0	No	1	One dose	2	Two doses	3	More than 2 doses	4	Unknown
0	No													
1	One dose													
2	Two doses													
3	More than 2 doses													
4	Unknown													
38	covid_vac_date <i>Show the field ONLY if: [covid_vac] = '1' or [covid_vac] = '2'</i>	Date of first COVID immunisation		text (date_dmy)										
39	covid_vac_prod <i>Show the field ONLY if: [covid_vac] = '1' or [covid_vac] = '2'</i>	Which COVID immunisation was given for the first dose?		dropdown <table border="1"> <tr><td>1</td><td>Moderna</td></tr> <tr><td>2</td><td>Pfizer-BioNtech</td></tr> <tr><td>3</td><td>Other</td></tr> </table>	1	Moderna	2	Pfizer-BioNtech	3	Other				
1	Moderna													
2	Pfizer-BioNtech													
3	Other													
40	covid_vac_prod_other <i>Show the field ONLY if: [covid_vac_prod] = '3'</i>	Which other vaccine was given for the first dose?		notes										
41	covid_vac_date2 <i>Show the field ONLY if: [covid_vac] = '2'</i>	Date of second COVID immunisation		text (date_dmy)										
42	covid_vac_prod2 <i>Show the field ONLY if: [covid_vac] = '2'</i>	Which COVID immunisation was given for the second dose?		dropdown <table border="1"> <tr><td>1</td><td>Moderna</td></tr> <tr><td>2</td><td>Pfizer-BioNtech</td></tr> <tr><td>3</td><td>Other</td></tr> </table>	1	Moderna	2	Pfizer-BioNtech	3	Other				
1	Moderna													
2	Pfizer-BioNtech													
3	Other													
43	covid_vac_adddose <i>Show the field ONLY if: [covid_vac] = '3'</i>	Please enter additional doses with date and product name		notes										
44	covid_vac_prod_other2 <i>Show the field ONLY if: [covid_vac_prod2] = '3'</i>	Which other vaccine was given for the second dose?		notes										
45	mmr	MMR immunisation		radio, Required <table border="1"> <tr><td>0</td><td>No</td></tr> <tr><td>1</td><td>One dose</td></tr> </table>	0	No	1	One dose						
0	No													
1	One dose													

			<table border="1"> <tr><td>2</td><td>Two doses</td></tr> <tr><td>3</td><td>Unknown</td></tr> </table>	2	Two doses	3	Unknown				
2	Two doses										
3	Unknown										
46	mmr_date <small>Show the field ONLY if: [mmr] = '1' or [mmr] = '2'</small>	Date of last MMR immunisation	text (date_dmy)								
47	bcg	BCG immunisation	radio, Required <table border="1"> <tr><td>0</td><td>No</td></tr> <tr><td>1</td><td>Yes</td></tr> <tr><td>2</td><td>Unknown</td></tr> </table>	0	No	1	Yes	2	Unknown		
0	No										
1	Yes										
2	Unknown										
48	bcg_date <small>Show the field ONLY if: [bcg] = '1'</small>	Date of BCG immunisation	text (date_dmy)								
49	influ	Influenza immunisation	radio, Required <table border="1"> <tr><td>0</td><td>No</td></tr> <tr><td>1</td><td>One season</td></tr> <tr><td>2</td><td>Several seasons</td></tr> <tr><td>3</td><td>Unknown</td></tr> </table>	0	No	1	One season	2	Several seasons	3	Unknown
0	No										
1	One season										
2	Several seasons										
3	Unknown										
50	influ_date <small>Show the field ONLY if: [influ] = '1' or [influ] = '2'</small>	Date of last influenza immunisation	text (date_dmy)								
51	recovery_yn	Has the patient been recruited for the SwissRecovery trial?	radio <table border="1"> <tr><td>1</td><td>Yes</td></tr> <tr><td>0</td><td>No</td></tr> <tr><td>8</td><td>I don't know</td></tr> </table>	1	Yes	0	No	8	I don't know		
1	Yes										
0	No										
8	I don't know										
52	adm	Section Header: <i>Hospital admission</i> Admission to hospital	radio, Required <table border="1"> <tr><td>1</td><td>Yes</td></tr> <tr><td>0</td><td>No</td></tr> </table>	1	Yes	0	No				
1	Yes										
0	No										
53	adm_start <small>Show the field ONLY if: [adm] = '1'</small>	Date of hospital admission	text (date_dmy), Required								
54	cons_date <small>Show the field ONLY if: [adm] = '0'</small>	Date of consultation	text (date_dmy)								
55	adm_reas <small>Show the field ONLY if: [adm] = '1'</small>	Reason for admission	radio, Required <table border="1"> <tr><td>0</td><td>Suspected SARS-CoV-2 infection</td></tr> <tr><td>1</td><td>Confirmed SARS-CoV-2 infection</td></tr> <tr><td>2</td><td>Other reason</td></tr> </table>	0	Suspected SARS-CoV-2 infection	1	Confirmed SARS-CoV-2 infection	2	Other reason		
0	Suspected SARS-CoV-2 infection										
1	Confirmed SARS-CoV-2 infection										
2	Other reason										
56	pims_yn	Was the child suspected or diagnosed with PIMS-TS? <small>At any time during the hospitalisations not necessary at admission (If in doubt please answer yes)</small>	radio <table border="1"> <tr><td>1</td><td>Yes</td></tr> <tr><td>0</td><td>No</td></tr> </table>	1	Yes	0	No				
1	Yes										
0	No										
57	adm_reas_other <small>Show the field ONLY if: [adm_reas] = '2'</small>	Other reason for admission	text, Required								
58	adm_prev	Previous admission for SARS-CoV-2 infection	yesno, Required <table border="1"> <tr><td>1</td><td>Yes</td></tr> <tr><td>0</td><td>No</td></tr> </table>	1	Yes	0	No				
1	Yes										
0	No										
59	adm_prev_date <small>Show the field ONLY if: [adm_prev] = '1'</small>	Date of previous admission	text (date_dmy), Required								

60	adm_from Show the field ONLY if: [adm] = '1'	Admitted from	radio, Required <table border="1"> <tr><td>0</td><td>Home</td></tr> <tr><td>1</td><td>Other hospital</td></tr> <tr><td>99</td><td>Other</td></tr> </table>	0	Home	1	Other hospital	99	Other		
0	Home										
1	Other hospital										
99	Other										
61	adm_from_other Show the field ONLY if: [adm_from] = '99'	Admitted from which other place	text, Required								
62	picu Show the field ONLY if: [adm] = '1'	Admission to intensive care unit	yesno, Required <table border="1"> <tr><td>1</td><td>Yes</td></tr> <tr><td>0</td><td>No</td></tr> </table>	1	Yes	0	No				
1	Yes										
0	No										
63	picu_start Show the field ONLY if: [picu] = '1'	Date of intensive care unit admission	text (date_dmy), Required								
64	picu_reas Show the field ONLY if: [picu] = '1'	Reason for intensive care unit admission	radio, Required <table border="1"> <tr><td>0</td><td>Respiratory failure</td></tr> <tr><td>1</td><td>Cardiac failure</td></tr> <tr><td>99</td><td>Other (please specify)</td></tr> </table>	0	Respiratory failure	1	Cardiac failure	99	Other (please specify)		
0	Respiratory failure										
1	Cardiac failure										
99	Other (please specify)										
65	picu_reas_other Show the field ONLY if: [picu_reas] = '99'	Other reason for intensive care unit admission	text, Required								
66	picu_stop Show the field ONLY if: [picu] = '1'	Date of intensive care unit discharge	text (date_dmy)								
67	adm_stop Show the field ONLY if: [adm] = '1'	Date of hospital discharge	text (date_dmy)								
68	outcome Show the field ONLY if: [adm] = '1'	Discharged to	radio, Required <table border="1"> <tr><td>0</td><td>Home</td></tr> <tr><td>1</td><td>Other hospital</td></tr> <tr><td>99</td><td>Other</td></tr> <tr><td>3</td><td>Died</td></tr> </table>	0	Home	1	Other hospital	99	Other	3	Died
0	Home										
1	Other hospital										
99	Other										
3	Died										
69	outcome_otherhosp Show the field ONLY if: [outcome] = '1'	Discharged to which other hospital	text, Required								
70	outcome_other Show the field ONLY if: [outcome] = '99'	Discharged to which other place	text, Required								
71	sym_tachy	Section Header: <i>Symptoms</i> Respiratory distress/tachypnoea	radio, Required <table border="1"> <tr><td>1</td><td>Yes</td></tr> <tr><td>0</td><td>No</td></tr> <tr><td>99</td><td>Not applicable</td></tr> </table> Custom alignment: RH	1	Yes	0	No	99	Not applicable		
1	Yes										
0	No										
99	Not applicable										
72	sym_oxy	Oxygen saturation < 92%	radio, Required <table border="1"> <tr><td>1</td><td>Yes</td></tr> <tr><td>0</td><td>No</td></tr> <tr><td>99</td><td>Not applicable</td></tr> </table> Custom alignment: RH	1	Yes	0	No	99	Not applicable		
1	Yes										
0	No										
99	Not applicable										
73	sym_oxy_start Show the field ONLY if: [sym_oxy] = '1'	Date of onset of saturation < 92%	text (date_dmy), Required								

74	sym_fev	Fever (> 38°C)	radio, Required <table border="1"> <tr><td>1</td><td>Yes</td></tr> <tr><td>0</td><td>No</td></tr> <tr><td>99</td><td>Not applicable</td></tr> </table> <p>Custom alignment: RH</p>	1	Yes	0	No	99	Not applicable
1	Yes								
0	No								
99	Not applicable								
75	sym_fev_start <small>Show the field ONLY if: [sym_fev] = '1'</small>	Date of onset of fever	text (date_dmy), Required						
76	sym_cough	Cough	radio, Required <table border="1"> <tr><td>1</td><td>Yes</td></tr> <tr><td>0</td><td>No</td></tr> <tr><td>99</td><td>Not applicable</td></tr> </table> <p>Custom alignment: RH</p>	1	Yes	0	No	99	Not applicable
1	Yes								
0	No								
99	Not applicable								
77	sym_phary	Pharyngitis/sore throat	radio, Required <table border="1"> <tr><td>1</td><td>Yes</td></tr> <tr><td>0</td><td>No</td></tr> <tr><td>99</td><td>Not applicable</td></tr> </table> <p>Custom alignment: RH</p>	1	Yes	0	No	99	Not applicable
1	Yes								
0	No								
99	Not applicable								
78	sym_nasal	Rhinorrhea/nasal congestion	radio, Required <table border="1"> <tr><td>1</td><td>Yes</td></tr> <tr><td>0</td><td>No</td></tr> <tr><td>99</td><td>Not applicable</td></tr> </table> <p>Custom alignment: RH</p>	1	Yes	0	No	99	Not applicable
1	Yes								
0	No								
99	Not applicable								
79	sym_abdo	Abdominal pain	radio, Required <table border="1"> <tr><td>1</td><td>Yes</td></tr> <tr><td>0</td><td>No</td></tr> <tr><td>99</td><td>Not applicable</td></tr> </table> <p>Custom alignment: RH</p>	1	Yes	0	No	99	Not applicable
1	Yes								
0	No								
99	Not applicable								
80	sym_vomit	Vomiting	radio, Required <table border="1"> <tr><td>1</td><td>Yes</td></tr> <tr><td>0</td><td>No</td></tr> <tr><td>99</td><td>Not applicable</td></tr> </table> <p>Custom alignment: RH</p>	1	Yes	0	No	99	Not applicable
1	Yes								
0	No								
99	Not applicable								
81	sym_diar	Diarrhea	radio, Required <table border="1"> <tr><td>1</td><td>Yes</td></tr> <tr><td>0</td><td>No</td></tr> <tr><td>99</td><td>Not applicable</td></tr> </table> <p>Custom alignment: RH</p>	1	Yes	0	No	99	Not applicable
1	Yes								
0	No								
99	Not applicable								
82	sym_ansom	Anosmia/dysgeusia	radio, Required <table border="1"> <tr><td>1</td><td>Yes</td></tr> <tr><td>0</td><td>No</td></tr> <tr><td>99</td><td>Not applicable</td></tr> </table> <p>Custom alignment: RH</p>	1	Yes	0	No	99	Not applicable
1	Yes								
0	No								
99	Not applicable								
83	sym_rash	Rash	radio, Required <table border="1"> <tr><td>1</td><td>Yes</td></tr> </table>	1	Yes				
1	Yes								

			<table border="1"> <tr> <td>0</td> <td>No</td> </tr> <tr> <td>99</td> <td>Not applicable</td> </tr> </table> <p>Custom alignment: RH</p>	0	No	99	Not applicable											
0	No																	
99	Not applicable																	
84	sym_rash_spec <i>Show the field ONLY if: [sym_rash] = '1'</i>	Specify rash (type, location)	notes, Required															
85	sym_other	Other	<p>radio, Required</p> <table border="1"> <tr> <td>1</td> <td>Yes</td> </tr> <tr> <td>0</td> <td>No</td> </tr> <tr> <td>99</td> <td>Not applicable</td> </tr> </table> <p>Custom alignment: RH</p>	1	Yes	0	No	99	Not applicable									
1	Yes																	
0	No																	
99	Not applicable																	
86	sym_other_spec <i>Show the field ONLY if: [sym_other] = '1'</i>	Which other symptoms	notes, Required															
87	diag_naso_1	Section Header: <i>Diagnostics</i> 1st nasopharyngeal swab RT-PCR	<p>radio, Required</p> <table border="1"> <tr> <td>99</td> <td>Not done</td> </tr> <tr> <td>1</td> <td>Positive</td> </tr> <tr> <td>0</td> <td>Negative</td> </tr> </table> <p>Custom alignment: RH</p>	99	Not done	1	Positive	0	Negative									
99	Not done																	
1	Positive																	
0	Negative																	
88	diag_naso_1_date <i>Show the field ONLY if: [diag_naso_1] = '1' or [diag_naso_1] = '0'</i>	Date of 1st nasopharyngeal swab RT-PCR	text (date_dmy), Required															
89	diag_naso_2	2nd nasopharyngeal swab RT-PCR	<p>radio, Required</p> <table border="1"> <tr> <td>99</td> <td>Not done</td> </tr> <tr> <td>1</td> <td>Positive</td> </tr> <tr> <td>0</td> <td>Negative</td> </tr> </table> <p>Custom alignment: RH</p>	99	Not done	1	Positive	0	Negative									
99	Not done																	
1	Positive																	
0	Negative																	
90	diag_naso_2_date <i>Show the field ONLY if: [diag_naso_2] = '1' or [diag_naso_2] = '0'</i>	Date of 2nd nasopharyngeal swab RT-PCR	text (date_dmy), Required															
91	diag_naso_3	3rd nasopharyngeal swab RT-PCR	<p>radio, Required</p> <table border="1"> <tr> <td>99</td> <td>Not done</td> </tr> <tr> <td>1</td> <td>Positive</td> </tr> <tr> <td>0</td> <td>Negative</td> </tr> </table> <p>Custom alignment: RH</p>	99	Not done	1	Positive	0	Negative									
99	Not done																	
1	Positive																	
0	Negative																	
92	diag_naso_3_date <i>Show the field ONLY if: [diag_naso_3] = '1' or [diag_naso_3] = '0'</i>	Date of 3rd nasopharyngeal swab RT-PCR	text (date_dmy), Required															
93	diag_naso_other	Detection of other viruses in nasopharyngeal swab <i>You can choose several answers if needed</i>	<p>checkbox, Required</p> <table border="1"> <tr> <td>3</td> <td>diag_naso_other__3</td> <td>Not done</td> </tr> <tr> <td>0</td> <td>diag_naso_other__0</td> <td>None found</td> </tr> <tr> <td>1</td> <td>diag_naso_other__1</td> <td>Influenza</td> </tr> <tr> <td>2</td> <td>diag_naso_other__2</td> <td>RSV</td> </tr> <tr> <td>99</td> <td>diag_naso_other__99</td> <td>Other</td> </tr> </table>	3	diag_naso_other__3	Not done	0	diag_naso_other__0	None found	1	diag_naso_other__1	Influenza	2	diag_naso_other__2	RSV	99	diag_naso_other__99	Other
3	diag_naso_other__3	Not done																
0	diag_naso_other__0	None found																
1	diag_naso_other__1	Influenza																
2	diag_naso_other__2	RSV																
99	diag_naso_other__99	Other																
94	diag_naso_other_spec <i>Show the field ONLY if:</i>	Which other virus was detected in nasopharyngeal swab	text, Required															

	[diag_naso_other(99)] = '1'								
95	diag_throat	Throat swab RT-PCR	radio, Required <table border="1"> <tr> <td>99</td> <td>Not done</td> </tr> <tr> <td>1</td> <td>Positive</td> </tr> <tr> <td>0</td> <td>Negative</td> </tr> </table>	99	Not done	1	Positive	0	Negative
99	Not done								
1	Positive								
0	Negative								
96	diag_throat_date <small>Show the field ONLY if: [diag_throat] = '1' or [diag_throat] = '0'</small>	Date of throat swab RT-PCR	text (date_dmy), Required						
97	diag_trach	Tracheal aspiration RT-PCR	radio, Required <table border="1"> <tr> <td>99</td> <td>Not done</td> </tr> <tr> <td>1</td> <td>Positive</td> </tr> <tr> <td>0</td> <td>Negative</td> </tr> </table>	99	Not done	1	Positive	0	Negative
99	Not done								
1	Positive								
0	Negative								
98	diag_trach_date <small>Show the field ONLY if: [diag_trach] = '1' or [diag_trach] = '0'</small>	Date of tracheal aspiration RT-PCR	text (date_dmy), Required						
99	diag_bal	BAL (bronchoalveolar lavage) RT-PCR	radio, Required <table border="1"> <tr> <td>99</td> <td>Not done</td> </tr> <tr> <td>1</td> <td>Positive</td> </tr> <tr> <td>0</td> <td>Negative</td> </tr> </table>	99	Not done	1	Positive	0	Negative
99	Not done								
1	Positive								
0	Negative								
100	diag_bal_date <small>Show the field ONLY if: [diag_bal] = '1' or [diag_bal] = '0'</small>	Date of BAL (bronchoalveolar lavage) RT-PCR	text (date_dmy), Required						
101	diag_stool	Stool RT-PCR	radio, Required <table border="1"> <tr> <td>99</td> <td>Not done</td> </tr> <tr> <td>1</td> <td>Positive</td> </tr> <tr> <td>0</td> <td>Negative</td> </tr> </table>	99	Not done	1	Positive	0	Negative
99	Not done								
1	Positive								
0	Negative								
102	diag_stool_date <small>Show the field ONLY if: [diag_stool] = '1' or [diag_stool] = '0'</small>	Date of stool RT-PCR	text (date_dmy), Required						
103	diag_ag	Antigentest	radio <table border="1"> <tr> <td>99</td> <td>Not done</td> </tr> <tr> <td>1</td> <td>Positive</td> </tr> <tr> <td>0</td> <td>Negative</td> </tr> </table>	99	Not done	1	Positive	0	Negative
99	Not done								
1	Positive								
0	Negative								
104	diag_ag_date <small>Show the field ONLY if: [diag_ag] = '1' or [diag_ag] = '0'</small>	Date of antigen test	text (date_dmy)						
105	diag_sero_1	1st serology	radio, Required <table border="1"> <tr> <td>99</td> <td>Not done</td> </tr> <tr> <td>1</td> <td>Positive</td> </tr> <tr> <td>0</td> <td>Negative</td> </tr> </table>	99	Not done	1	Positive	0	Negative
99	Not done								
1	Positive								
0	Negative								
106	diag_sero_1_date <small>Show the field ONLY if: [diag_sero_1] = '1' or [diag_sero_1] = '0'</small>	Date of 1st serology	text (date_dmy), Required						
107	diag_sero_1_igm <small>Show the field ONLY if: [diag_sero_1] = '1'</small>	Result of 1st serology: IgM with units	text						

108	diag_sero_1_iga <small>Show the field ONLY if: [diag_sero_1] = '1'</small>	Result of 1st serology: IgA with units	text												
109	diag_sero_1_igg <small>Show the field ONLY if: [diag_sero_1] = '1'</small>	Result of 1st serology: IgG with units	text												
110	diag_sero_2	2nd serology	radio, Required <table border="1"> <tr><td>99</td><td>Not done</td></tr> <tr><td>1</td><td>Positive</td></tr> <tr><td>0</td><td>Negative</td></tr> </table>	99	Not done	1	Positive	0	Negative						
99	Not done														
1	Positive														
0	Negative														
111	diag_sero_2_date <small>Show the field ONLY if: [diag_sero_2] = '1' or [diag_se ro_2] = '0'</small>	Date of 2nd serology	text (date_dmy), Required												
112	diag_sero_2_igm <small>Show the field ONLY if: [diag_sero_2] = '1'</small>	Result of 2nd serology: IgM with units	text												
113	diag_sero_2_iga <small>Show the field ONLY if: [diag_sero_2] = '1'</small>	Result of 2nd serology: IgA with units	text												
114	diag_sero_2_igg <small>Show the field ONLY if: [diag_sero_2] = '1'</small>	Result of 2nd serology: IgG with units	text												
115	diag_xray_1	1st chest x-ray	radio, Required <table border="1"> <tr><td>99</td><td>Not done</td></tr> <tr><td>0</td><td>Normal</td></tr> <tr><td>1</td><td>Unilateral changes</td></tr> <tr><td>2</td><td>Bilateral changes</td></tr> <tr><td>3</td><td>ARDS</td></tr> <tr><td>4</td><td>Other</td></tr> </table>	99	Not done	0	Normal	1	Unilateral changes	2	Bilateral changes	3	ARDS	4	Other
99	Not done														
0	Normal														
1	Unilateral changes														
2	Bilateral changes														
3	ARDS														
4	Other														
116	diag_xray_1_other <small>Show the field ONLY if: [diag_xray_1] = '4'</small>	Which other findings were found on the 1st chest x-ray	text, Required												
117	diag_xray_1_date <small>Show the field ONLY if: [diag_xray_1] = '1' or [diag_xra y_1] = '0' or [diag_xray_1] = '2' or [diag_xray_1] = '3' or [diag_ xray_1] = '4'</small>	Date of 1st chest x-ray	text (date_dmy), Required												
118	diag_xray_2	2nd chest x-ray	radio, Required <table border="1"> <tr><td>99</td><td>Not done</td></tr> <tr><td>0</td><td>Normal</td></tr> <tr><td>1</td><td>Unilateral changes</td></tr> <tr><td>2</td><td>Bilateral changes</td></tr> <tr><td>3</td><td>ARDS</td></tr> <tr><td>4</td><td>Other</td></tr> </table>	99	Not done	0	Normal	1	Unilateral changes	2	Bilateral changes	3	ARDS	4	Other
99	Not done														
0	Normal														
1	Unilateral changes														
2	Bilateral changes														
3	ARDS														
4	Other														
119	diag_xray_2_other <small>Show the field ONLY if: [diag_xray_2] = '4'</small>	Which other findings were found on the 2nd chest x-ray	text, Required												
120	diag_xray_2_date <small>Show the field ONLY if: [diag_xray_2] = '1' or [diag_xra</small>	Date of 2nd chest x-ray	text (date_dmy), Required												

	y_2] = '0' or [diag_xray_2] = '2' or [diag_xray_2] = '3' or [diag_xray_2] = '4'														
121	diag_xray_3	3rd chest x-ray	radio, Required <table border="1"> <tr><td>99</td><td>Not done</td></tr> <tr><td>0</td><td>Normal</td></tr> <tr><td>1</td><td>Unilateral changes</td></tr> <tr><td>2</td><td>Bilateral changes</td></tr> <tr><td>3</td><td>ARDS</td></tr> <tr><td>4</td><td>Other</td></tr> </table>	99	Not done	0	Normal	1	Unilateral changes	2	Bilateral changes	3	ARDS	4	Other
99	Not done														
0	Normal														
1	Unilateral changes														
2	Bilateral changes														
3	ARDS														
4	Other														
122	diag_xray_3_other Show the field ONLY if: [diag_xray_3] = '4'	Which other findings were found on the 3rd chest x-ray	text, Required												
123	diag_xray_2_date_2 Show the field ONLY if: [diag_xray_3] = '1' or [diag_xray_3] = '0' or [diag_xray_3] = '2' or [diag_xray_3] = '3' or [diag_xray_3] = '4'	Date of 3rd chest x-ray	text (date_dmy), Required												
124	diag_echo Show the field ONLY if: [pims_yn] = '0'	Echocardiography	radio, Required <table border="1"> <tr><td>99</td><td>Not done</td></tr> <tr><td>0</td><td>Normal</td></tr> <tr><td>1</td><td>Abnormal</td></tr> </table>	99	Not done	0	Normal	1	Abnormal						
99	Not done														
0	Normal														
1	Abnormal														
125	diag_echo_spec Show the field ONLY if: [diag_echo] = '1'	Which abnormal findings were found on echocardiography	text, Required												
126	diag_echo_date Show the field ONLY if: [diag_echo] = '1' or [diag_echo] = '0'	Date of echocardiography	text (date_dmy), Required												
127	diag_other	Was there another diagnostic done (e.g. CT)	yesno, Required <table border="1"> <tr><td>1</td><td>Yes</td></tr> <tr><td>0</td><td>No</td></tr> </table>	1	Yes	0	No								
1	Yes														
0	No														
128	diag_other_spec Show the field ONLY if: [diag_other] = '1'	Which other diagnostic was done, on what date and what was found	notes, Required												
129	pims_col Show the field ONLY if: [pims_yn] = '1'	Section Header: <i>PIMS-TS symptoms</i> Colitis or ileitis	radio (Matrix) <table border="1"> <tr><td>1</td><td>Present</td></tr> <tr><td>0</td><td>Not present</td></tr> <tr><td>99</td><td>Unknown</td></tr> </table>	1	Present	0	Not present	99	Unknown						
1	Present														
0	Not present														
99	Unknown														
130	pims_asc Show the field ONLY if: [pims_yn] = '1'	Ascites	radio (Matrix) <table border="1"> <tr><td>1</td><td>Present</td></tr> <tr><td>0</td><td>Not present</td></tr> <tr><td>99</td><td>Unknown</td></tr> </table>	1	Present	0	Not present	99	Unknown						
1	Present														
0	Not present														
99	Unknown														
131	pims_splen Show the field ONLY if: [pims_yn] = '1'	Splenomegaly	radio (Matrix) <table border="1"> <tr><td>1</td><td>Present</td></tr> <tr><td>0</td><td>Not present</td></tr> <tr><td>99</td><td>Unknown</td></tr> </table>	1	Present	0	Not present	99	Unknown						
1	Present														
0	Not present														
99	Unknown														
132	pims_hep Show the field ONLY if: [pims_yn] = '1'	Hepatomegaly	radio (Matrix) <table border="1"> <tr><td>1</td><td>Present</td></tr> <tr><td>0</td><td>Not present</td></tr> <tr><td></td><td></td></tr> </table>	1	Present	0	Not present								
1	Present														
0	Not present														

			99 Unknown
133	pims_hypo Show the field ONLY if: [pims_yn] = '1'	Hypotension	radio (Matrix) 1 Present 0 Not present 99 Unknown
134	pims_oligo Show the field ONLY if: [pims_yn] = '1'	Oliguria < 0.5ml/kg/h	radio (Matrix) 1 Present 0 Not present 99 Unknown
135	pims_cap Show the field ONLY if: [pims_yn] = '1'	Capillary refill time > 5s	radio (Matrix) 1 Present 0 Not present 99 Unknown
136	pims_myo Show the field ONLY if: [pims_yn] = '1'	Myocardial dysfunction	radio (Matrix) 1 Present 0 Not present 99 Unknown
137	pims_conj Show the field ONLY if: [pims_yn] = '1'	Conjunctivitis	radio (Matrix) 1 Present 0 Not present 99 Unknown
138	pims_mucus Show the field ONLY if: [pims_yn] = '1'	Other mucus membrane changes	radio (Matrix) 1 Present 0 Not present 99 Unknown
139	pims_head Show the field ONLY if: [pims_yn] = '1'	Headache	radio (Matrix) 1 Present 0 Not present 99 Unknown
140	pims_conf Show the field ONLY if: [pims_yn] = '1'	Confusion	radio (Matrix) 1 Present 0 Not present 99 Unknown
141	pims_irri Show the field ONLY if: [pims_yn] = '1'	Irritability	radio (Matrix) 1 Present 0 Not present 99 Unknown
142	pims_consc Show the field ONLY if: [pims_yn] = '1'	Reduced level of consciousness	radio (Matrix) 1 Present 0 Not present 99 Unknown
143	pims_sync Show the field ONLY if: [pims_yn] = '1'	Syncope	radio (Matrix) 1 Present 0 Not present 99 Unknown
144	pims_lymph Show the field ONLY if: [pims_yn] = '1'	Lymphadenopathy	radio (Matrix) 1 Present 0 Not present

			99 Unknown
145	pims_swol Show the field ONLY if: [pims_yn] = '1'	Swollen hands or feet	radio (Matrix) 1 Present 0 Not present 99 Unknown
146	pims_fev Show the field ONLY if: [pims_yn] = '1'	Fever > 38°C	radio (Matrix) 1 Present 0 Not present 99 Unknown
147	pims_oth Show the field ONLY if: [pims_yn] = '1'	Any other symptoms?	radio (Matrix) 1 Present 0 Not present 99 Unknown
148	pims_oth_spec Show the field ONLY if: [pims_yn] = '1' and [pims_oth] = '1'	Which other symptoms did the patient have?	notes
149	pims_hypo_spec Show the field ONLY if: [pims_yn] = '1' and [pims_hypo] = '1'	Please specify the lowest systolic blood pressure in mmHg	text (number)
150	pims_fev_spec Show the field ONLY if: [pims_yn] = '1' and [pims_fev] = '1'	How many days of fever did the child have?	text (number)
151	neu_adm Show the field ONLY if: [pims_yn] = '1'	Section Header: <i>PIMS-TS diagnostics - blood tests</i> Neutrophil level at admission in G/l	text (number)
152	neu_high Show the field ONLY if: [pims_yn] = '1'	HIGHEST neutrophil level during admission in G/l	text (number)
153	neu_high_date Show the field ONLY if: [pims_yn] = '1'	Date	text (date_dmy)
154	neu_low Show the field ONLY if: [pims_yn] = '1'	LOWEST neutrophil level during admission in G/l	text (number)
155	neu_low_date Show the field ONLY if: [pims_yn] = '1'	Date	text (date_dmy)
156	lym_adm Show the field ONLY if: [pims_yn] = '1'	Lymphocyte level at admission in G/l	text (number)
157	lym_high Show the field ONLY if: [pims_yn] = '1'	HIGHEST lymphocyte level during admission in G/l	text (number)
158	lym_high_date Show the field ONLY if: [pims_yn] = '1'	Date	text (date_dmy)
159	lym_low Show the field ONLY if: [pims_yn] = '1'	LOWEST lymphocyte level during admission in G/l	text (number)

160	lym_low_date Show the field ONLY if: [pims_yn] = '1'	Date	text (date_dmy)
161	plt_adm Show the field ONLY if: [pims_yn] = '1'	Platelet level at admission in G/l	text (number)
162	plt_high Show the field ONLY if: [pims_yn] = '1'	HIGHEST platelet level during admission in G/l	text (number)
163	plt_high_date Show the field ONLY if: [pims_yn] = '1'	Date	text (date_dmy)
164	plt_low Show the field ONLY if: [pims_yn] = '1'	LOWEST platelet level during admission in G/l	text (number)
165	plt_low_date Show the field ONLY if: [pims_yn] = '1'	Date	text (date_dmy)
166	crp_adm Show the field ONLY if: [pims_yn] = '1'	CRP level at admission in mg/l	text (number)
167	crp_high Show the field ONLY if: [pims_yn] = '1'	HIGHEST CRP level during admission in mg/l	text (number)
168	crp_high_date Show the field ONLY if: [pims_yn] = '1'	Date	text (date_dmy)
169	crp_dis Show the field ONLY if: [pims_yn] = '1'	CRP level closest to discharge in mg/l	text (number)
170	crp_dis_date Show the field ONLY if: [pims_yn] = '1'	Date	text (date_dmy)
171	esr_adm Show the field ONLY if: [pims_yn] = '1'	ESR at admission in mm/1.h	text (number)
172	esr_high Show the field ONLY if: [pims_yn] = '1'	HIGHEST ESR during admission in mm/1.h	text (number)
173	esr_high_date Show the field ONLY if: [pims_yn] = '1'	Date	text (date_dmy)
174	esr_dis Show the field ONLY if: [pims_yn] = '1'	ESR closest to discharge in mm/1.h	text (number)
175	esr_dis_date Show the field ONLY if: [pims_yn] = '1'	Date	text (date_dmy)
176	fer_adm Show the field ONLY if: [pims_yn] = '1'	Ferritin at admission in ug/l	text (number)
177	fer_high Show the field ONLY if:	HIGHEST ferritin during admission in ug/l	text (number)

	[pims_yn] = '1'		
178	fer_high_date Show the field ONLY if: [pims_yn] = '1'	Date	text (date_dmy)
179	fre_dis Show the field ONLY if: [pims_yn] = '1'	Ferritin closest to discharge in ug/l	text (number)
180	fre_dis_date Show the field ONLY if: [pims_yn] = '1'	Date	text (date_dmy)
181	ddm_adm Show the field ONLY if: [pims_yn] = '1'	D-dimer level at admission in g/l	text (number)
182	ddm_high Show the field ONLY if: [pims_yn] = '1'	HIGHEST d-dimers during admission in g/l	text (number)
183	ddm_high_date Show the field ONLY if: [pims_yn] = '1'	Date	text (date_dmy)
184	ddm_dis Show the field ONLY if: [pims_yn] = '1'	D-dimer level closest to discharge in g/l	text (number)
185	ddm_dis_date Show the field ONLY if: [pims_yn] = '1'	Date	text (date_dmy)
186	trop_adm Show the field ONLY if: [pims_yn] = '1'	Troponin T level at admission in ng/l	text (number)
187	trop_high Show the field ONLY if: [pims_yn] = '1'	HIGHEST troponin T level during admission in ng/l	text (number)
188	trop_high_date Show the field ONLY if: [pims_yn] = '1'	Date	text (date_dmy)
189	trop_dis Show the field ONLY if: [pims_yn] = '1'	Troponin T level closest to discharge in ng/l	text (number)
190	trop_dis_date Show the field ONLY if: [pims_yn] = '1'	Date	text (date_dmy)
191	bnp_adm Show the field ONLY if: [pims_yn] = '1'	NT-pro-BNP level at admission in pg/l	text (number)
192	bnp_high Show the field ONLY if: [pims_yn] = '1'	HIGHEST NT-pro-BNP level during admission in pg/l	text (number)
193	bnp_high_date Show the field ONLY if: [pims_yn] = '1'	Date	text (date_dmy)
194	bnp_dis Show the field ONLY if: [pims_yn] = '1'	NT-pro-BNP level closest to discharge in pg/l	text (number)
195	bnp_dis_date	Date	text (date_dmy)

	Show the field ONLY if: [pims_yn] = '1'														
196	alat_adm Show the field ONLY if: [pims_yn] = '1'	ALAT at admission in mmol/l	text (number)												
197	alat_high Show the field ONLY if: [pims_yn] = '1'	HIGHEST ALAT level during admission in mmol/l	text (number)												
198	alat_high_date Show the field ONLY if: [pims_yn] = '1'	Date	text (date_dmy)												
199	alat_dis Show the field ONLY if: [pims_yn] = '1'	ALAT level closest to discharge in mmol/l	text (number)												
200	alat_dis_date Show the field ONLY if: [pims_yn] = '1'	Date	text (date_dmy)												
201	crea_adm Show the field ONLY if: [pims_yn] = '1'	Creatinine at admission in umol/l	text (number)												
202	crea_high Show the field ONLY if: [pims_yn] = '1'	HIGHEST creatinine level during admission in umol/l	text (number)												
203	crea_high_date Show the field ONLY if: [pims_yn] = '1'	Date	text (date_dmy)												
204	crea_dis Show the field ONLY if: [pims_yn] = '1'	Creatinine level closest to discharge in umol/l	text (number)												
205	crea_dis_date Show the field ONLY if: [pims_yn] = '1'	Date	text (date_dmy)												
206	pims_cult Show the field ONLY if: [pims_yn] = '1'	Section Header: <i>PIMS-TS diagnostics - microbiology</i> Blood cultures	radio <table border="1"> <tr> <td>1</td> <td>Done</td> </tr> <tr> <td>2</td> <td>Not done</td> </tr> </table>	1	Done	2	Not done								
1	Done														
2	Not done														
207	pims_cult_date Show the field ONLY if: [pims_yn] = '1' and [pims_cult] = '1'	Date of blood cultures	text (date_dmy)												
208	pims_cult_pos Show the field ONLY if: [pims_yn] = '1' and [pims_cult] = '1'	Result of blood cultures	radio <table border="1"> <tr> <td>1</td> <td>Positive</td> </tr> <tr> <td>0</td> <td>Negative</td> </tr> <tr> <td>2</td> <td>Contamination</td> </tr> </table>	1	Positive	0	Negative	2	Contamination						
1	Positive														
0	Negative														
2	Contamination														
209	pims_cult_spec Show the field ONLY if: [pims_yn] = '1' and [pims_cult] = '1' and [pims_cult_pos] = '1'	Specify bacteria found in blood cultures	text												
210	pims_us Show the field ONLY if: [pims_yn] = '1'	Section Header: <i>PIMS-TS diagnostics - ultrasound</i> Abdominal ultrasound (report the most pathological ultrasound)	checkbox <table border="1"> <tr> <td>0</td> <td>pims_us__0</td> <td>Normal</td> </tr> <tr> <td>1</td> <td>pims_us__1</td> <td>Hepatomegaly</td> </tr> <tr> <td>2</td> <td>pims_us__2</td> <td>Splenomegaly</td> </tr> <tr> <td>3</td> <td>pims_us__3</td> <td>Ascites</td> </tr> </table>	0	pims_us__0	Normal	1	pims_us__1	Hepatomegaly	2	pims_us__2	Splenomegaly	3	pims_us__3	Ascites
0	pims_us__0	Normal													
1	pims_us__1	Hepatomegaly													
2	pims_us__2	Splenomegaly													
3	pims_us__3	Ascites													

			<table border="1"> <tr> <td>4</td> <td>pims_us__4</td> <td>Ileitis/colitis</td> </tr> <tr> <td>5</td> <td>pims_us__5</td> <td>Mesenteric adenitis</td> </tr> <tr> <td>6</td> <td>pims_us__6</td> <td>Other pathologic findings</td> </tr> <tr> <td>7</td> <td>pims_us__7</td> <td>Not done</td> </tr> </table>	4	pims_us__4	Ileitis/colitis	5	pims_us__5	Mesenteric adenitis	6	pims_us__6	Other pathologic findings	7	pims_us__7	Not done
4	pims_us__4	Ileitis/colitis													
5	pims_us__5	Mesenteric adenitis													
6	pims_us__6	Other pathologic findings													
7	pims_us__7	Not done													
211	<p>pims_us_norm</p> <p>Show the field ONLY if: [pims_yn] = '1' and [pims_us(6)] = '1'</p>	Which other pathological findings did the abdominal ultrasound show?	notes												
212	<p>pims_us_date</p> <p>Show the field ONLY if: [pims_yn] = '1' and ([pims_us(1)] = '1' or [pims_us(2)] = '1' or [pims_us(3)] = '1' or [pims_us(4)] = '1' or [pims_us(0)] = '1' or [pims_us(5)] = '1' or [pims_us(6)] = '1')</p>	Date of abdominal ultrasound	text (date_dmy)												
213	<p>pims_tri</p> <p>Show the field ONLY if: [pims_yn] = '1'</p>	<p>Section Header: <i>PIMS-TS HLH diagnostics</i></p> <p>Triglycerides</p>	<p>radio</p> <table border="1"> <tr> <td>1</td> <td>Done</td> </tr> <tr> <td>0</td> <td>Not done</td> </tr> </table>	1	Done	0	Not done								
1	Done														
0	Not done														
214	<p>pims_tri_spec</p> <p>Show the field ONLY if: [pims_yn] = '1' and [pims_tri] = '1'</p>	Highest level of triglycerides in mmol/l	text (number)												
215	<p>pims_tri_date</p> <p>Show the field ONLY if: [pims_yn] = '1' and [pims_tri] = '1'</p>	Date when highest level of triglycerides was measured	text (date_dmy)												
216	<p>pims_fib</p> <p>Show the field ONLY if: [pims_yn] = '1'</p>	Fibrinogen	<p>radio</p> <table border="1"> <tr> <td>1</td> <td>Done</td> </tr> <tr> <td>0</td> <td>Not done</td> </tr> </table>	1	Done	0	Not done								
1	Done														
0	Not done														
217	<p>pims_fib_spec</p> <p>Show the field ONLY if: [pims_yn] = '1' and [pims_fib] = '1'</p>	Highest level of fibrinogen in g/l	text (number)												
218	<p>pims_fib_date</p> <p>Show the field ONLY if: [pims_yn] = '1' and [pims_fib] = '1'</p>	Date when highest level of fibrinogen was measured	text (date_dmy)												
219	<p>pims_il2</p> <p>Show the field ONLY if: [pims_yn] = '1'</p>	s-IL2 receptor/CD25	<p>radio</p> <table border="1"> <tr> <td>1</td> <td>Done</td> </tr> <tr> <td>0</td> <td>Not done</td> </tr> </table>	1	Done	0	Not done								
1	Done														
0	Not done														
220	<p>pims_il2_date</p> <p>Show the field ONLY if: [pims_yn] = '1' and [pims_il2] = '1'</p>	Date when s-IL2/CD25 receptor was measured	text												
221	<p>pims_il2_spec</p> <p>Show the field ONLY if: [pims_yn] = '1' and [pims_il2] = '1'</p>	Level of s-IL2/CD25 receptor	text												
222	<p>pims_bone</p> <p>Show the field ONLY if: [pims_yn] = '1'</p>	Bone marrow	<p>radio</p> <table border="1"> <tr> <td>1</td> <td>Done</td> </tr> <tr> <td>0</td> <td>Not done</td> </tr> </table>	1	Done	0	Not done								
1	Done														
0	Not done														
223	<p>pims_bone_date</p> <p>Show the field ONLY if:</p>	Date the bone marrow was done	text (date_dmy)												

	[pims_yn] = '1' and [pims_bone] = '1'						
224	pims_bone_norm Show the field ONLY if: [pims_yn] = '1' and [pims_bone] = '1'	Results of bone marrow	radio <table border="1"> <tr> <td>1</td> <td>Normal</td> </tr> <tr> <td>2</td> <td>Abnormal</td> </tr> </table>	1	Normal	2	Abnormal
1	Normal						
2	Abnormal						
225	pims_bone_spec Show the field ONLY if: [pims_yn] = '1' and [pims_bone] = '1' and [pims_bone_norm] = '2'	Specify abnormal findings found in bone marrow	notes				
226	pims_echo1_yn Show the field ONLY if: [pims_yn] = '1'	Section Header: <i>PIMS-TS cardiac diagnostics</i> Was an echocardiography done?	radio <table border="1"> <tr> <td>1</td> <td>Done</td> </tr> <tr> <td>2</td> <td>Not done</td> </tr> </table>	1	Done	2	Not done
1	Done						
2	Not done						
227	pims_echo1_date Show the field ONLY if: [pims_yn] = '1' and [pims_echo1_yn] = '1'	On which date was the echocardiography done?	text (date_dmy)				
228	pims_echo1_dys Show the field ONLY if: [pims_yn] = '1' and [pims_echo1_yn] = '1'	Was there left ventricular systolic dysfunction on the first echocardiography?	radio <table border="1"> <tr> <td>1</td> <td>Yes</td> </tr> <tr> <td>2</td> <td>No</td> </tr> </table>	1	Yes	2	No
1	Yes						
2	No						
229	pims_echo1_ef Show the field ONLY if: [pims_yn] = '1' and [pims_echo1_yn] = '1' and [pims_echo1_dys] = '1'	What was the LVEF in %?	text (number)				
230	pims_echo1_fs Show the field ONLY if: [pims_yn] = '1' and [pims_echo1_yn] = '1' and [pims_echo1_dys] = '1'	What was the LVEF in %?	text (number)				
231	pims_echo1_dys_r Show the field ONLY if: [pims_yn] = '1' and [pims_echo1_yn] = '1'	Was there right ventricular systolic dysfunction on the first echocardiography?	radio <table border="1"> <tr> <td>1</td> <td>Yes</td> </tr> <tr> <td>2</td> <td>No</td> </tr> </table>	1	Yes	2	No
1	Yes						
2	No						
232	pims_echo1_tapse Show the field ONLY if: [pims_yn] = '1' and [pims_echo1_yn] = '1' and [pims_echo1_dys_r] = '1'	What was the TAPSE in mm?	text (number)				
233	pims_echo1_fac Show the field ONLY if: [pims_yn] = '1' and [pims_echo1_yn] = '1' and [pims_echo1_dys_r] = '1'	What was the FAC in %	text (number)				
234	pims_echo1_dys_dia Show the field ONLY if: [pims_yn] = '1' and [pims_echo1_yn] = '1'	Was there left or right ventricular systolic dysfunction on the first echocardiography?	radio <table border="1"> <tr> <td>1</td> <td>Yes</td> </tr> <tr> <td>2</td> <td>No</td> </tr> </table>	1	Yes	2	No
1	Yes						
2	No						
235	pims_echo1_lewave Show the field ONLY if: [pims_yn] = '1' and [pims_echo1_yn] = '1' and [pims_echo1_dys_dia] = '1'	What was the lateral E' wave velocity in cm/s?	text (number)				
236	pims_echo1_lawave Show the field ONLY if: [pims_yn] = '1' and [pims_echo1_yn] = '1'	What was the lateral A' wave velocity in cm/s?	text (number)				

	[pims_yn] = '1' and [pims_echo1_dys_dia] = '1'																	
237	pims_echo1_mewave <i>Show the field ONLY if:</i> [pims_yn] = '1' and [pims_echo1_yn] = '1' and [pims_echo1_dys_dia] = '1'	What was the medial E' wave velocity in cm/s?	text (number)															
238	pims_echo1_mawave <i>Show the field ONLY if:</i> [pims_yn] = '1' and [pims_echo1_yn] = '1' and [pims_echo1_dys_dia] = '1'	What was the medial A' wave velocity in cm/s?	text (number)															
239	pims_echo1_ivrt <i>Show the field ONLY if:</i> [pims_yn] = '1' and [pims_echo1_yn] = '1' and [pims_echo1_dys_dia] = '1'	What was the IVRT (isovolumetric relaxation time) in ms?	text (number)															
240	pims_echo1_eff <i>Show the field ONLY if:</i> [pims_yn] = '1' and [pims_echo1_yn] = '1'	Was there a pericardial effusion on the first echocardiography?	radio <table border="1"> <tr><td>1</td><td>Yes</td></tr> <tr><td>0</td><td>No</td></tr> </table>	1	Yes	0	No											
1	Yes																	
0	No																	
241	pims_echo1_reg <i>Show the field ONLY if:</i> [pims_echo1_yn] = '1'	Was there any mitral valve regurgitation?	radio <table border="1"> <tr><td>0</td><td>None</td></tr> <tr><td>1</td><td>Mild</td></tr> <tr><td>2</td><td>Moderate</td></tr> <tr><td>3</td><td>Severe</td></tr> </table>	0	None	1	Mild	2	Moderate	3	Severe							
0	None																	
1	Mild																	
2	Moderate																	
3	Severe																	
242	pims_echo1_dil <i>Show the field ONLY if:</i> [pims_yn] = '1' and [pims_echo1_yn] = '1'	Was there any coronary artery dilatation on the first echocardiography?	radio <table border="1"> <tr><td>1</td><td>Yes</td></tr> <tr><td>2</td><td>No</td></tr> </table>	1	Yes	2	No											
1	Yes																	
2	No																	
243	pims_echo1_dil_spec <i>Show the field ONLY if:</i> [pims_yn] = '1' and [pims_echo1_yn] = '1' and [pims_echo1_dil] = '1'	Please specify the location of the dilatation	checkbox <table border="1"> <tr><td>1</td><td>pims_echo1_dil_spec__1</td><td>Right proximal coronary artery (RCA)</td></tr> <tr><td>2</td><td>pims_echo1_dil_spec__2</td><td>Right mid coronary artery (RCA)</td></tr> <tr><td>3</td><td>pims_echo1_dil_spec__3</td><td>Left main coronary artery (LMCA)</td></tr> <tr><td>4</td><td>pims_echo1_dil_spec__4</td><td>Left anterior descending artery (LAD)</td></tr> <tr><td>5</td><td>pims_echo1_dil_spec__5</td><td>Left circumflex coronary artery (LCX)</td></tr> </table>	1	pims_echo1_dil_spec__1	Right proximal coronary artery (RCA)	2	pims_echo1_dil_spec__2	Right mid coronary artery (RCA)	3	pims_echo1_dil_spec__3	Left main coronary artery (LMCA)	4	pims_echo1_dil_spec__4	Left anterior descending artery (LAD)	5	pims_echo1_dil_spec__5	Left circumflex coronary artery (LCX)
1	pims_echo1_dil_spec__1	Right proximal coronary artery (RCA)																
2	pims_echo1_dil_spec__2	Right mid coronary artery (RCA)																
3	pims_echo1_dil_spec__3	Left main coronary artery (LMCA)																
4	pims_echo1_dil_spec__4	Left anterior descending artery (LAD)																
5	pims_echo1_dil_spec__5	Left circumflex coronary artery (LCX)																
244	pims_echo1_dil_spec_zs <i>Show the field ONLY if:</i> [pims_yn] = '1' and [pims_echo1_yn] = '1' and [pims_echo1_dil] = '1' and [pims_echo1_dil_spec(1)] = '1'	What was the Boston z-score of the right proximal coronary artery?	text (number)															
245	pims_echo1_dil_spec_zs_2 <i>Show the field ONLY if:</i> [pims_yn] = '1' and [pims_echo1_yn] = '1' and [pims_echo1_dil] = '1' and [pims_echo1_dil_spec(2)] = '1'	What was the Boston z-score of the right mid coronary artery?	text (number)															
246	pims_echo1_dil_spec_zs_3 <i>Show the field ONLY if:</i> [pims_yn] = '1' and [pims_echo1_yn] = '1' and [pims_echo1_dil] = '1' and [pims_echo1_dil_spec(3)] = '1'	What was the Boston z-score of the left main coronary artery?	text (number)															

	o1_yn] = '1' and [pims_echo1_dil] = '1' and [pims_echo1_dil_spec(3)] = '1'						
247	pims_echo1_dil_spec_zs_4 <i>Show the field ONLY if:</i> [pims_yn] = '1' and [pims_echo1_yn] = '1' and [pims_echo1_dil] = '1' and [pims_echo1_dil_spec(4)] = '1'	What was the Boston z-score of the left main anterior descending artery?	text (number)				
248	pims_echo1_dil_spec_zs_5 <i>Show the field ONLY if:</i> [pims_yn] = '1' and [pims_echo1_yn] = '1' and [pims_echo1_dil] = '1' and [pims_echo1_dil_spec(5)] = '1'	What was the Boston z-score of the left main anterior circumflex artery?	text (number)				
249	echo1_other <i>Show the field ONLY if:</i> [pims_yn] = '1' and [pims_echo1_yn] = '1'	Where there any other pathological findings on the first echocardiography?	radio <table border="1"> <tr> <td>1</td> <td>Yes</td> </tr> <tr> <td>0</td> <td>No</td> </tr> </table>	1	Yes	0	No
1	Yes						
0	No						
250	echo1_other_spec <i>Show the field ONLY if:</i> [pims_yn] = '1' and [pims_echo1_yn] = '1' and [echo1_other] = '1'	What was the other pathologic finding on the echocardiography?	notes				
251	pims_echo3_yn <i>Show the field ONLY if:</i> [pims_yn] = '1'	Was an other echocardiography done during admission? Please report the most pathological echocardiography during admission	radio <table border="1"> <tr> <td>1</td> <td>Done</td> </tr> <tr> <td>2</td> <td>Not done</td> </tr> </table>	1	Done	2	Not done
1	Done						
2	Not done						
252	pims_echo3_date <i>Show the field ONLY if:</i> [pims_yn] = '1' and [pims_echo3_yn] = '1'	On which date was the echocardiography done during admission?	text (date_dmy)				
253	pims_echo3_dys <i>Show the field ONLY if:</i> [pims_yn] = '1' and [pims_echo3_yn] = '1'	Was there left ventricular systolic dysfunction on echocardiography during admission?	radio <table border="1"> <tr> <td>1</td> <td>Yes</td> </tr> <tr> <td>2</td> <td>No</td> </tr> </table>	1	Yes	2	No
1	Yes						
2	No						
254	pims_echo3_ef <i>Show the field ONLY if:</i> [pims_yn] = '1' and [pims_echo3_yn] = '1' and [pims_echo3_dys] = '1'	What was the LVEF in %?	text (number)				
255	pims_echo3_fs <i>Show the field ONLY if:</i> [pims_yn] = '1' and [pims_echo3_yn] = '1' and [pims_echo3_dys] = '1'	What was the LVFS in %?	text (number)				
256	pims_echo3_dys_r <i>Show the field ONLY if:</i> [pims_yn] = '1' and [pims_echo3_yn] = '1'	Was there right ventricular systolic dysfunction on echocardiography during admission?	radio <table border="1"> <tr> <td>1</td> <td>Yes</td> </tr> <tr> <td>2</td> <td>No</td> </tr> </table>	1	Yes	2	No
1	Yes						
2	No						
257	pims_echo3_tapse <i>Show the field ONLY if:</i> [pims_yn] = '1' and [pims_echo3_yn] = '1' and [pims_echo3_dys_r] = '1'	What was the TAPSE in mm?	text (number)				
258	pims_echo3_fac <i>Show the field ONLY if:</i> [pims_yn] = '1' and [pims_echo3_yn] = '1' and [pims_echo3_dys_r] = '1'	What was the FAC in %?	text (number)				

259	pims_echo3_dys_dia Show the field ONLY if: [pims_yn] = '1' and [pims_echo3_yn] = '1'	Was there Left or right ventricular diastolic dysfunction on echocardiography during admission?	radio 1 Yes 2 No
260	pims_echo3_lewave Show the field ONLY if: [pims_yn] = '1' and [pims_echo3_yn] = '1' and [pims_echo3_dys_dia] = '1'	What was the lateral E' wave velocity in cm/s?	text (number)
261	pims_echo3_lawave Show the field ONLY if: [pims_yn] = '1' and [pims_echo3_yn] = '1' and [pims_echo3_dys_dia] = '1'	What was the lateral A' wave velocity in cm/s?	text (number)
262	pims_echo3_mewave Show the field ONLY if: [pims_yn] = '1' and [pims_echo3_yn] = '1' and [pims_echo3_dys_dia] = '1'	What was the medial E' wave velocity in cm/s?	text (number)
263	pims_echo3_mawave Show the field ONLY if: [pims_yn] = '1' and [pims_echo3_yn] = '1' and [pims_echo3_dys_dia] = '1'	What was the medial A' wave velocity in cm/s?	text (number)
264	pims_echo3_ivrt Show the field ONLY if: [pims_yn] = '1' and [pims_echo3_yn] = '1' and [pims_echo3_dys_dia] = '1'	What was the IVRT (isovolumetric relaxation time) in ms?	text (number)
265	pims_echo3_eff Show the field ONLY if: [pims_yn] = '1' and [pims_echo3_yn] = '1'	Was there a pericardial effusion on the echocardiography during admission?	radio 1 Yes 0 No
266	pims_echo3_reg Show the field ONLY if: [pims_echo3_yn] = '1'	Was there any mitral valve regurgitation?	radio 0 None 1 Mild 2 Moderate 3 Severe
267	pims_echo3_dil Show the field ONLY if: [pims_yn] = '1' and [pims_echo3_yn] = '1'	Was there any coronary artery dilatation on the echocardiography during admission?	radio 1 Yes 2 No
268	pims_echo3_dil_spec Show the field ONLY if: [pims_yn] = '1' and [pims_echo3_yn] = '1' and [pims_echo3_dil] = '1'	Please specify the location of the dilatation	checkbox 1 pims_echo3_dil_spec__1 Right proximal coronary artery (RCA) 2 pims_echo3_dil_spec__2 Right mid coronary artery (RCA) 3 pims_echo3_dil_spec__3 Left main coronary artery (LMCA) 4 pims_echo3_dil_spec__4 Left anterior descending artery (LAD) 5 pims_echo3_dil_spec__5 Left circumflex coronary artery (LCX)
269	pims_echo3_dil_spec_zs Show the field ONLY if: [pims_yn] = '1' and [pims_echo3_yn] = '1'	What was the Boston z-score of the right proximal coronary artery?	text (number)

	o3_yn] = '1' and [pims_echo3_dil] = '1' and [pims_echo3_dil_spec(1)] = '1'						
270	pims_echo3_dil_spec_zs2 Show the field ONLY if: [pims_yn] = '1' and [pims_echo3_yn] = '1' and [pims_echo3_dil] = '1' and [pims_echo3_dil_spec(2)] = '1'	What was the Boston z-score of the right proximal coronary artery?	text (number)				
271	pims_echo3_dil_spec_zs_3 Show the field ONLY if: [pims_yn] = '1' and [pims_echo3_yn] = '1' and [pims_echo3_dil] = '1' and [pims_echo3_dil_spec(3)] = '1'	What was the Boston z-score of the left main artery?	text (number)				
272	pims_echo3_dil_spec_zs_4 Show the field ONLY if: [pims_yn] = '1' and [pims_echo3_yn] = '1' and [pims_echo3_dil] = '1' and [pims_echo3_dil_spec(5)] = '1'	What was the Boston z-score of the left anterior descending artery?	text (number)				
273	pims_echo3_dil_spec_zs_5 Show the field ONLY if: [pims_yn] = '1' and [pims_echo3_yn] = '1' and [pims_echo3_dil] = '1' and [pims_echo3_dil_spec(4)] = '1'	What was the Boston z-score of the left anterior circumflex artery?	text (number)				
274	echo3_other Show the field ONLY if: [pims_yn] = '1' and [pims_echo3_yn] = '1'	Where there any other pathological findings on the echocardiography during admission?	radio <table border="1"> <tr> <td>1</td> <td>Yes</td> </tr> <tr> <td>2</td> <td>No</td> </tr> </table>	1	Yes	2	No
1	Yes						
2	No						
275	echo3_other_spec Show the field ONLY if: [pims_yn] = '1' and [pims_echo3_yn] = '1' and [echo3_other] = '1'	What was the other pathologic finding on the echocardiography during admission?	notes				
276	pims_echo2_yn Show the field ONLY if: [pims_yn] = '1'	Was an echocardiography done before discharge?	radio <table border="1"> <tr> <td>1</td> <td>Done</td> </tr> <tr> <td>2</td> <td>Not done</td> </tr> </table>	1	Done	2	Not done
1	Done						
2	Not done						
277	pims_echo2_date Show the field ONLY if: [pims_yn] = '1' and [pims_echo2_yn] = '1'	On which date was the echocardiography done before discharge?	text (date_dmy)				
278	pims_echo2_dys Show the field ONLY if: [pims_yn] = '1' and [pims_echo2_yn] = '1'	Was there left ventricular systolic dysfunction on echocardiography before discharge?	radio <table border="1"> <tr> <td>1</td> <td>Yes</td> </tr> <tr> <td>2</td> <td>No</td> </tr> </table>	1	Yes	2	No
1	Yes						
2	No						
279	pims_echo2_ef Show the field ONLY if: [pims_yn] = '1' and [pims_echo2_yn] = '1' and [pims_echo2_dys] = '1'	What was the LVEF in %?	text (number)				
280	pims_echo2_fs Show the field ONLY if: [pims_yn] = '1' and [pims_echo2_yn] = '1' and [pims_echo2_dys] = '1'	What was the LVFS in %?	text (number)				
281	pims_echo2_dys_r	Was there right ventricular systolic dysfunction on echocardiography before discharge?	radio <table border="1"> <tr> <td></td> <td></td> </tr> </table>				

	Show the field ONLY if: [pims_yn] = '1' and [pims_echo2_yn] = '1'		<table border="1"> <tr> <td>1</td> <td>Yes</td> </tr> <tr> <td>2</td> <td>No</td> </tr> </table>	1	Yes	2	No				
1	Yes										
2	No										
282	pims_echo2_tapse Show the field ONLY if: [pims_yn] = '1' and [pims_echo2_yn] = '1' and [pims_echo2_dys_r] = '1'	What was the TAPSE in mm?	text (number)								
283	pims_echo2_fac Show the field ONLY if: [pims_yn] = '1' and [pims_echo2_yn] = '1' and [pims_echo2_dys_r] = '1'	What was the FAC in %?	text (number)								
284	pims_echo2_dys_dia Show the field ONLY if: [pims_yn] = '1' and [pims_echo2_yn] = '1'	Was there Left or right ventricular diastolic dysfunction on echocardiography before discharge?	radio <table border="1"> <tr> <td>1</td> <td>Yes</td> </tr> <tr> <td>2</td> <td>No</td> </tr> </table>	1	Yes	2	No				
1	Yes										
2	No										
285	pims_echo2_lewave Show the field ONLY if: [pims_yn] = '1' and [pims_echo2_yn] = '1' and [pims_echo2_dys_dia] = '1'	What was the lateral E' wave velocity in cm/s?	text (number)								
286	pims_echo2_lawave Show the field ONLY if: [pims_yn] = '1' and [pims_echo2_yn] = '1' and [pims_echo2_dys_dia] = '1'	What was the lateral A' wave velocity in cm/s?	text (number)								
287	pims_echo2_mewave Show the field ONLY if: [pims_yn] = '1' and [pims_echo2_yn] = '1' and [pims_echo2_dys_dia] = '1'	What was the medial E' wave velocity in cm/s?	text (number)								
288	pims_echo2_mawave Show the field ONLY if: [pims_yn] = '1' and [pims_echo2_yn] = '1' and [pims_echo2_dys_dia] = '1'	What was the medial A' wave velocity in cm/s?	text (number)								
289	pims_echo2_ivrt Show the field ONLY if: [pims_yn] = '1' and [pims_echo2_yn] = '1' and [pims_echo2_dys_dia] = '1'	What was the IVRT (isovolumetric relaxation time) in ms?	text (number)								
290	pims_echo2_eff Show the field ONLY if: [pims_yn] = '1' and [pims_echo2_yn] = '1'	Was there a pericardial effusion on the echocardiography before discharge?	radio <table border="1"> <tr> <td>1</td> <td>Yes</td> </tr> <tr> <td>0</td> <td>No</td> </tr> </table>	1	Yes	0	No				
1	Yes										
0	No										
291	pims_echo2_reg Show the field ONLY if: [pims_echo2_yn] = '1'	Was there any mitral valve regurgitation?	radio <table border="1"> <tr> <td>0</td> <td>None</td> </tr> <tr> <td>1</td> <td>Mild</td> </tr> <tr> <td>2</td> <td>Moderate</td> </tr> <tr> <td>3</td> <td>Severe</td> </tr> </table>	0	None	1	Mild	2	Moderate	3	Severe
0	None										
1	Mild										
2	Moderate										
3	Severe										
292	pims_echo2_dil Show the field ONLY if: [pims_yn] = '1' and [pims_echo2_yn] = '1'	Was there any coronary artery dilatation on the echocardiography before discharge?	radio <table border="1"> <tr> <td>1</td> <td>Yes</td> </tr> <tr> <td>2</td> <td>No</td> </tr> </table>	1	Yes	2	No				
1	Yes										
2	No										
293	pims_echo2_dil_spec Show the field ONLY if:	Please specify the location of the dilatation	checkbox <table border="1"> <tr> <td>1</td> <td>pims_echo2_dil_spec__1</td> <td>Right proximal</td> </tr> </table>	1	pims_echo2_dil_spec__1	Right proximal					
1	pims_echo2_dil_spec__1	Right proximal									

	[pims_yn] = '1' and [pims_echo2_o2_yn] = '1' and [pims_echo2_dil] = '1'		<table border="1"> <tr> <td></td> <td></td> <td>coronary artery (RCA)</td> </tr> <tr> <td>2</td> <td>pims_echo2_dil_spec__2</td> <td>Right mid coronary artery (RCA)</td> </tr> <tr> <td>3</td> <td>pims_echo2_dil_spec__3</td> <td>Left main coronary artery (LMCA)</td> </tr> <tr> <td>4</td> <td>pims_echo2_dil_spec__4</td> <td>Left anterior descending artery (LAD)</td> </tr> <tr> <td>5</td> <td>pims_echo2_dil_spec__5</td> <td>Left circumflex coronary artery (LCX)</td> </tr> </table>			coronary artery (RCA)	2	pims_echo2_dil_spec__2	Right mid coronary artery (RCA)	3	pims_echo2_dil_spec__3	Left main coronary artery (LMCA)	4	pims_echo2_dil_spec__4	Left anterior descending artery (LAD)	5	pims_echo2_dil_spec__5	Left circumflex coronary artery (LCX)			
		coronary artery (RCA)																			
2	pims_echo2_dil_spec__2	Right mid coronary artery (RCA)																			
3	pims_echo2_dil_spec__3	Left main coronary artery (LMCA)																			
4	pims_echo2_dil_spec__4	Left anterior descending artery (LAD)																			
5	pims_echo2_dil_spec__5	Left circumflex coronary artery (LCX)																			
294	pims_echo2_dil_spec_zs Show the field ONLY if: [pims_yn] = '1' and [pims_echo2_o2_yn] = '1' and [pims_echo2_dil] = '1' and [pims_echo2_dil_spec(1)] = '1'	What was the Boston z-score of the right proximal coronary artery?	text (number)																		
295	pims_echo2_dil_spec_zs_2 Show the field ONLY if: [pims_yn] = '1' and [pims_echo2_o2_yn] = '1' and [pims_echo2_dil] = '1' and [pims_echo2_dil_spec(2)] = '1'	What was the Boston z-score of the right mid coronary artery?	text (number)																		
296	pims_echo2_dil_spec_zs_3 Show the field ONLY if: [pims_yn] = '1' and [pims_echo2_o2_yn] = '1' and [pims_echo2_dil] = '1' and [pims_echo2_dil_spec(3)] = '1'	What was the Boston z-score of the left main artery?	text (number)																		
297	pims_echo2_dil_spec_zs_4 Show the field ONLY if: [pims_yn] = '1' and [pims_echo2_o2_yn] = '1' and [pims_echo2_dil] = '1' and [pims_echo2_dil_spec(4)] = '1'	What was the Boston z-score of the left anterior descending artery?	text (number)																		
298	pims_echo2_dil_spec_zs_5 Show the field ONLY if: [pims_yn] = '1' and [pims_echo2_o2_yn] = '1' and [pims_echo2_dil] = '1' and [pims_echo2_dil_spec(5)] = '1'	What was the Boston z-score of the left anterior circumflex artery?	text (number)																		
299	echo2_other Show the field ONLY if: [pims_yn] = '1' and [pims_echo2_o2_yn] = '1'	Where there any other pathological findings on the echocardiography before discharge?	radio <table border="1"> <tr> <td>1</td> <td>Yes</td> </tr> <tr> <td>2</td> <td>No</td> </tr> </table>	1	Yes	2	No														
1	Yes																				
2	No																				
300	echo2_other_spec Show the field ONLY if: [pims_yn] = '1' and [pims_echo2_o2_yn] = '1' and [echo2_other] = '1'	What was the other pathologic finding on the echocardiography before discharge?	notes																		
301	pims_ecg_yn Show the field ONLY if: [pims_yn] = '1'	ECG at any time point (report most pathological)	checkbox <table border="1"> <tr> <td>0</td> <td>pims_ecg_yn__0</td> <td>Not done</td> </tr> <tr> <td>1</td> <td>pims_ecg_yn__1</td> <td>Normal</td> </tr> <tr> <td>2</td> <td>pims_ecg_yn__2</td> <td>AV block</td> </tr> <tr> <td>3</td> <td>pims_ecg_yn__3</td> <td>Prolonged QT interval</td> </tr> <tr> <td>4</td> <td>pims_ecg_yn__4</td> <td>Tachyarrhythmia</td> </tr> <tr> <td>5</td> <td>pims_ecg_yn__5</td> <td>Other abnormality</td> </tr> </table>	0	pims_ecg_yn__0	Not done	1	pims_ecg_yn__1	Normal	2	pims_ecg_yn__2	AV block	3	pims_ecg_yn__3	Prolonged QT interval	4	pims_ecg_yn__4	Tachyarrhythmia	5	pims_ecg_yn__5	Other abnormality
0	pims_ecg_yn__0	Not done																			
1	pims_ecg_yn__1	Normal																			
2	pims_ecg_yn__2	AV block																			
3	pims_ecg_yn__3	Prolonged QT interval																			
4	pims_ecg_yn__4	Tachyarrhythmia																			
5	pims_ecg_yn__5	Other abnormality																			
302	pims_ecg_date	On which day was the ECG?	text (date_dmy)																		

	Show the field ONLY if: [pims_ecg_yn(1)] = '1' or [pims_ecg_yn(2)] = '1' or [pims_ecg_yn(3)] = '1' or [pims_ecg_yn(4)] = '1' or [pims_ecg_yn(5)] = '1'		
303	pims_ecg_block Show the field ONLY if: [pims_ecg_yn(2)] = '1'	Which degree of AV-Block was found?	text
304	pims_ecg_spec Show the field ONLY if: [pims_ecg_yn(5)] = '1'	Which other pathology was found on ECG?	text
305	pims_ivig_yn Show the field ONLY if: [pims_yn] = '1'	Section Header: <i>PIMS-TS treatment</i> IVIG	radio (Matrix) 1 Yes 0 No
306	pims_meth_yn Show the field ONLY if: [pims_yn] = '1'	Methylprednisolone, initial dosing	radio (Matrix) 1 Yes 0 No
307	pims_meth2_yn Show the field ONLY if: [pims_yn] = '1' and [pims_meth_yn] = '1'	Methylprednisolone, change in dosing	radio (Matrix) 1 Yes 0 No
308	pims_meth3_yn Show the field ONLY if: [pims_yn] = '1' and [pims_meth2_yn] = '1'	Methylprednisolone, third different dosing	radio (Matrix) 1 Yes 0 No
309	pims_pred_yn Show the field ONLY if: [pims_yn] = '1'	Prednisolone, initial dosing	radio (Matrix) 1 Yes 0 No
310	pims_pred2_yn Show the field ONLY if: [pims_yn] = '1' and [pims_pred_yn] = '1'	Prednisolone, change in dosing	radio (Matrix) 1 Yes 0 No
311	pims_pred3_yn Show the field ONLY if: [pims_yn] = '1' and [pims_pred2_yn] = '1'	Prednisolone, third different dosing	radio (Matrix) 1 Yes 0 No
312	pims_aka_yn Show the field ONLY if: [pims_yn] = '1'	Anakinra	radio (Matrix) 1 Yes 0 No
313	pims_toc_yn Show the field ONLY if: [pims_yn] = '1'	Tocilizumab	radio (Matrix) 1 Yes 0 No
314	pims_inf_yn Show the field ONLY if: [pims_yn] = '1'	Infliximab	radio (Matrix) 1 Yes 0 No
315	pims_hep_yn Show the field ONLY if: [pims_yn] = '1'	Unfractionated heparin	radio (Matrix) 1 Yes 0 No
316	pims_lowhep_yn Show the field ONLY if: [pims_yn] = '1'	Low-molecular-weight heparin	radio (Matrix) 1 Yes 0 No
317	pims_asph_yn	Aspirin, high-dose	radio (Matrix) 1 Yes 0 No

	Show the field ONLY if: [pims_yn] = '1'		<table border="1"><tr><td>1</td><td>Yes</td></tr><tr><td>0</td><td>No</td></tr></table>	1	Yes	0	No
1	Yes						
0	No						
318	pims_aspl_yn Show the field ONLY if: [pims_yn] = '1'	Aspirin, low-dose	radio (Matrix) <table border="1"><tr><td>1</td><td>Yes</td></tr><tr><td>0</td><td>No</td></tr></table>	1	Yes	0	No
1	Yes						
0	No						
319	pims_oth_yn Show the field ONLY if: [pims_yn] = '1'	Other medication	radio (Matrix) <table border="1"><tr><td>1</td><td>Yes</td></tr><tr><td>0</td><td>No</td></tr></table>	1	Yes	0	No
1	Yes						
0	No						
320	pims_ivig_dose Show the field ONLY if: [pims_yn] = '1' and [pims_ivig_yn] = '1'	Dose of IVIG in mg/kg	text				
321	pims_ivig_n24 Show the field ONLY if: [pims_yn] = '1' and [pims_ivig_yn] = '1'	Number of doses of IVIG per 24h	text (number)				
322	pims_ivig_start Show the field ONLY if: [pims_yn] = '1' and [pims_ivig_yn] = '1'	Start date of IVIG	text (date_dmy)				
323	pims_ivig_stop Show the field ONLY if: [pims_yn] = '1' and [pims_ivig_yn] = '1'	Stop date of IVIG	text (date_dmy)				
324	pims_meth_dose Show the field ONLY if: [pims_yn] = '1' and [pims_meth_h_yn] = '1'	Initial dose of methylprednisolone in mg/kg	text				
325	pims_meth_n24 Show the field ONLY if: [pims_yn] = '1' and [pims_meth_h_yn] = '1'	Number of doses of initial dose of methylprednisolone per 24h	text (number)				
326	pims_meth_start Show the field ONLY if: [pims_yn] = '1' and [pims_meth_h_yn] = '1'	Start date of initial dose of methylprednisolone	text (date_dmy)				
327	pims_meth_stop Show the field ONLY if: [pims_yn] = '1' and [pims_meth_h_yn] = '1'	Stop date of initial dose of methylprednisolone	text (date_dmy)				
328	pims_meth_stop_2 Show the field ONLY if: [pims_yn] = '1' and [pims_meth_h_yn] = '1'	Projected duration in days if not stopped before discharge	text (number)				
329	pims_meth2_dose Show the field ONLY if: [pims_yn] = '1' and [pims_meth_h2_yn] = '1'	Second dose of methylprednisolone in mg/kg	text				
330	pims_meth2_n24 Show the field ONLY if: [pims_yn] = '1' and [pims_meth_h2_yn] = '1'	Number of doses of second dose of methylprednisolone per 24h	text (number)				
331	pims_meth2_start Show the field ONLY if: [pims_yn] = '1' and [pims_meth	Start date doses of second dose of methylprednisolone	text (date_dmy)				

	h2_yn] = '1'		
332	pims_meth2_stop <i>Show the field ONLY if: [pims_yn] = '1' and [pims_met h2_yn] = '1'</i>	Stop date doses of second dose of methylprednisolone	text (date_dmy)
333	pims_meth2_stop_2 <i>Show the field ONLY if: [pims_yn] = '1' and [pims_met h2_yn] = '1'</i>	Projected duration in days if not stopped before discharge	text (number)
334	pims_meth3_dose <i>Show the field ONLY if: [pims_yn] = '1' and [pims_met h3_yn] = '1'</i>	Third dosing of methylprednisolone in mg/kg	text
335	pims_meth3_n24 <i>Show the field ONLY if: [pims_yn] = '1' and [pims_met h3_yn] = '1'</i>	Number of doses of third dosing of methylprednisolone per 24h	text (number)
336	pims_meth3_start <i>Show the field ONLY if: [pims_yn] = '1' and [pims_met h3_yn] = '1'</i>	Start date of third dosing of methylprednisolone	text (date_dmy)
337	pims_meth3_stop <i>Show the field ONLY if: [pims_yn] = '1' and [pims_met h3_yn] = '1'</i>	Stop date of third dosing of methylprednisolone	text (date_dmy)
338	pims_meth3_stop_2 <i>Show the field ONLY if: [pims_yn] = '1' and [pims_met h3_yn] = '1'</i>	Projected duration in days if not stopped before discharge	text (number)
339	pims_pred_dose <i>Show the field ONLY if: [pims_yn] = '1' and [pims_pre d_yn] = '1'</i>	Initial dose of prednisolone in mg/kg	text
340	pims_pred_n24 <i>Show the field ONLY if: [pims_yn] = '1' and [pims_pre d_yn] = '1'</i>	Number of doses of prednisolone per 24h	text (number)
341	pims_pred_start <i>Show the field ONLY if: [pims_yn] = '1' and [pims_pre d_yn] = '1'</i>	Start date of initial dose of prednisolone	text (date_dmy)
342	pims_pred_stop <i>Show the field ONLY if: [pims_yn] = '1' and [pims_pre d_yn] = '1'</i>	Stop date of initial dose of prednisolone	text (date_dmy)
343	pims_pred_stop_2 <i>Show the field ONLY if: [pims_yn] = '1' and [pims_pre d_yn] = '1'</i>	Projected duration in days if not stopped before discharge	text (number)
344	pims_pred2_dose <i>Show the field ONLY if: [pims_yn] = '1' and [pims_pre d2_yn] = '1'</i>	Second dosing of prednisolone in mg/kg	text
345	pims_pred2_n24 <i>Show the field ONLY if: [pims_yn] = '1' and [pims_pre d2_yn] = '1'</i>	Number of doses of second dosing of prednisolone per 24h	text (number)

346	pims_pred2_start <i>Show the field ONLY if: [pims_yn] = '1' and [pims_pre d2_yn] = '1'</i>	Start date of second dosing of prednisolone per 24h	text (date_dmy)
347	pims_pred2_stop <i>Show the field ONLY if: [pims_yn] = '1' and [pims_pre d2_yn] = '1'</i>	Stop date of second dosing of prednisolone per 24h	text (date_dmy)
348	pims_pred2_stop_2 <i>Show the field ONLY if: [pims_yn] = '1' and [pims_pre d2_yn] = '1'</i>	Projected duration in days if not stopped before discharge	text (number)
349	pims_pred3_dose <i>Show the field ONLY if: [pims_yn] = '1' and [pims_pre d3_yn] = '1'</i>	Third dosing of prednisolone in mg/kg	text
350	pims_pred3_n24 <i>Show the field ONLY if: [pims_yn] = '1' and [pims_pre d3_yn] = '1'</i>	Number of doses of third dosing of prednisolone per 24h	text (number)
351	pims_pred3_start <i>Show the field ONLY if: [pims_yn] = '1' and [pims_pre d3_yn] = '1'</i>	Start date third dosing of prednisolone	text (date_dmy)
352	pims_pred3_stop <i>Show the field ONLY if: [pims_yn] = '1' and [pims_pre d3_yn] = '1'</i>	Stop date third dosing of prednisolone	text (date_dmy)
353	pims_pred3_stop_2 <i>Show the field ONLY if: [pims_yn] = '1' and [pims_pre d3_yn] = '1'</i>	Projected duration in days if not stopped before discharge	text (number)
354	pims_aka_dose <i>Show the field ONLY if: [pims_yn] = '1' and [pims_aka _yn] = '1'</i>	Dose of anakinra in mg/kg	text
355	pims_aka_n24 <i>Show the field ONLY if: [pims_yn] = '1' and [pims_aka _yn] = '1'</i>	Number of doses of anakinra per 24h	text (number)
356	pims_aka_start <i>Show the field ONLY if: [pims_yn] = '1' and [pims_aka _yn] = '1'</i>	Start date of anakinra	text (date_dmy)
357	pims_aka_stop <i>Show the field ONLY if: [pims_yn] = '1' and [pims_aka _yn] = '1'</i>	Stop date of anakinra	text (date_dmy)
358	pims_aka_stop_2 <i>Show the field ONLY if: [pims_yn] = '1' and [pims_aka _yn] = '1'</i>	Projected duration in days if not stopped before discharge	text (number)
359	pims_toc_dose <i>Show the field ONLY if: [pims_yn] = '1' and [pims_toc_ yn] = '1'</i>	Dose of tocilizumab in mg/kg	text


360	pims_toc_n24 Show the field ONLY if: [pims_yn] = '1' and [pims_toc_yn] = '1'	Number of doses of tocilizumab per 24h	text (number)
361	pims_toc_start Show the field ONLY if: [pims_yn] = '1' and [pims_toc_yn] = '1'	Start date of tocilizumab	text (date_dmy)
362	pims_toc_stop Show the field ONLY if: [pims_yn] = '1' and [pims_toc_yn] = '1'	Stop date of tocilizumab	text (date_dmy)
363	pims_toc_stop_2 Show the field ONLY if: [pims_yn] = '1' and [pims_toc_yn] = '1'	Projected duration in days if not stopped before discharge	text (number)
364	pims_inf_dose Show the field ONLY if: [pims_yn] = '1' and [pims_inf_yn] = '1'	Dose of infliximab in mg/kg	text
365	pims_inf_n24 Show the field ONLY if: [pims_yn] = '1' and [pims_inf_yn] = '1'	Number of doses of infliximab per 24h	text (number)
366	pims_inf_start Show the field ONLY if: [pims_yn] = '1' and [pims_inf_yn] = '1'	Start date of infliximab	text (date_dmy)
367	pims_inf_stop Show the field ONLY if: [pims_yn] = '1' and [pims_inf_yn] = '1'	Stop date of infliximab	text (date_dmy)
368	pims_inf_stop_2 Show the field ONLY if: [pims_yn] = '1' and [pims_inf_yn] = '1'	Projected duration in days if not stopped before discharge	text (number)
369	pims_hep_dose Show the field ONLY if: [pims_yn] = '1' and [pims_hep_yn] = '1'	Dose of unfractionatd heparin in mg/kg	text
370	pims_hep_n24 Show the field ONLY if: [pims_yn] = '1' and [pims_hep_yn] = '1'	Number of doses of unfractionated heparin per 24h	text (number)
371	pims_hep_start Show the field ONLY if: [pims_yn] = '1' and [pims_hep_yn] = '1'	Start date of unfractionated heparin	text (date_dmy)
372	pims_hep_stop Show the field ONLY if: [pims_yn] = '1' and [pims_hep_yn] = '1'	Stop date of unfractionated heparin	text (date_dmy)
373	pims_hep_stop_2 Show the field ONLY if: [pims_yn] = '1' and [pims_hep_yn] = '1'	Projected duration in days if not stopped before discharge	text (number)

374	pims_lowhep_dose <i>Show the field ONLY if: [pims_yn] = '1' and [pims_lowhep_yn] = '1'</i>	Dose of low-molecular-weight heparin in mg/kg	text
375	pims_lowhep_n24 <i>Show the field ONLY if: [pims_yn] = '1' and [pims_lowhep_yn] = '1'</i>	Number of doses of low-molecular-weight heparin per 24h	text (number)
376	pims_lowhep_start <i>Show the field ONLY if: [pims_yn] = '1' and [pims_lowhep_yn] = '1'</i>	Start date of low-molecular-weight heparin	text (date_dmy)
377	pims_lowhep_stop <i>Show the field ONLY if: [pims_yn] = '1' and [pims_lowhep_yn] = '1'</i>	Stop date of low-molecular-weight heparin	text (date_dmy)
378	pims_lowhep_stop_2 <i>Show the field ONLY if: [pims_yn] = '1' and [pims_lowhep_yn] = '1'</i>	Projected duration in days if not stopped before discharge	text (number)
379	pims_asph_dose <i>Show the field ONLY if: [pims_yn] = '1' and [pims_asph_yn] = '1'</i>	Dose of high-dose aspirin in mg/kg	text
380	pims_asph_n24 <i>Show the field ONLY if: [pims_yn] = '1' and [pims_asph_yn] = '1'</i>	Number of doses of high-dose aspirin in 24h	text (number)
381	pims_asph_start <i>Show the field ONLY if: [pims_yn] = '1' and [pims_asph_yn] = '1'</i>	Start date of high-dose aspirin in 24h	text (date_dmy)
382	pims_asph_stop <i>Show the field ONLY if: [pims_yn] = '1' and [pims_asph_yn] = '1'</i>	Stop date of high-dose aspirin in 24h	text (date_dmy)
383	pims_asph_stop_2 <i>Show the field ONLY if: [pims_yn] = '1' and [pims_asph_yn] = '1'</i>	Projected duration in days if not stopped before discharge	text (number)
384	pims_aspl_dose <i>Show the field ONLY if: [pims_yn] = '1' and [pims_aspl_yn] = '1'</i>	Dose of low-dose aspirin in mg/kg	text
385	pims_aspl_n24 <i>Show the field ONLY if: [pims_yn] = '1' and [pims_aspl_yn] = '1'</i>	Number of doses of low-dose aspirin in 24h	text (number)
386	pims_aspl_start <i>Show the field ONLY if: [pims_yn] = '1' and [pims_aspl_yn] = '1'</i>	Start date of low-dose aspirin	text (date_dmy)
387	pims_aspl_stop <i>Show the field ONLY if: [pims_yn] = '1' and [pims_aspl_yn] = '1'</i>	Stop date of low-dose aspirin	text (date_dmy)

388	pims_aspl_stop_2 Show the field ONLY if: [pims_yn] = '1' and [pims_aspl_yn] = '1'	Projected duration in days if not stopped before discharge	text (number)				
389	pims_oth_med Show the field ONLY if: [pims_oth_yn] = '1'	Which other medication was given?	text				
390	pims_oth_dose Show the field ONLY if: [pims_yn] = '1' and [pims_oth_yn] = '1'	Dose of [pims_oth_med] in mg/kg	text				
391	pims_oth_n24 Show the field ONLY if: [pims_yn] = '1' and [pims_oth_yn] = '1'	Number of doses of [pims_oth_med] per 24h	text (number)				
392	pims_oth_start Show the field ONLY if: [pims_yn] = '1' and [pims_oth_yn] = '1'	Start date of [pims_oth_med]	text (date_dmy)				
393	pims_oth_stop Show the field ONLY if: [pims_yn] = '1' and [pims_oth_yn] = '1'	Stop date of [pims_oth_med]	text (date_dmy)				
394	pims_oth_stop_2 Show the field ONLY if: [pims_yn] = '1' and [pims_oth_yn] = '1'	Projected duration in days if not stopped before discharge	text (number)				
395	treat_oxy Show the field ONLY if: [adm] = '1'	Section Header: <i>Treatment</i> Oxygen support	radio, Required <table border="1"> <tr> <td>1</td> <td>Yes</td> </tr> <tr> <td>0</td> <td>No</td> </tr> </table>	1	Yes	0	No
1	Yes						
0	No						
396	treat_oxy_time Show the field ONLY if: [treat_oxy] = '1'	How many days on oxygen	text (number)				
397	treat_highoxy Show the field ONLY if: [adm] = '1'	High-flow oxygen	radio, Required <table border="1"> <tr> <td>1</td> <td>Yes</td> </tr> <tr> <td>0</td> <td>No</td> </tr> </table>	1	Yes	0	No
1	Yes						
0	No						
398	treat_highoxy_time Show the field ONLY if: [treat_highoxy] = '1'	How many days on high-flow oxygen	text (number)				
399	treat_niv Show the field ONLY if: [adm] = '1'	CPAP or other NIV (NIV=non-invasive ventilation)	radio, Required <table border="1"> <tr> <td>1</td> <td>Yes</td> </tr> <tr> <td>0</td> <td>No</td> </tr> </table>	1	Yes	0	No
1	Yes						
0	No						
400	treat_niv_time Show the field ONLY if: [treat_niv] = '1'	How many days on CPAP or other NIV	text (number)				
401	treat_mech Show the field ONLY if: [adm] = '1'	Mechanical ventilation	radio, Required <table border="1"> <tr> <td>1</td> <td>Yes</td> </tr> <tr> <td>0</td> <td>No</td> </tr> </table>	1	Yes	0	No
1	Yes						
0	No						
402	treat_mech_time Show the field ONLY if: [treat_mech] = '1'	How many days on mechanical ventilation	text (number)				
403	treat_mech_oxy Show the field ONLY if:	Maximum FiO2 in %	text (integer, Max: 101)				

	[treat_mech] = '1'																				
404	treat_mech_flow <i>Show the field ONLY if: [treat_mech] = '1'</i>	Maximum flow rate in L/min	text (number)																		
405	treat_ecmo <i>Show the field ONLY if: [adm] = '1'</i>	ECMO	radio, Required <table border="1"> <tr> <td>1</td> <td>Yes</td> </tr> <tr> <td>0</td> <td>No</td> </tr> </table>	1	Yes	0	No														
1	Yes																				
0	No																				
406	treat_ecmo_time <i>Show the field ONLY if: [treat_ecmo] = '1'</i>	How many days on ECMO	text (number)																		
407	treat_inot <i>Show the field ONLY if: [adm] = '1'</i>	Inotropic support	radio, Required <table border="1"> <tr> <td>1</td> <td>Yes</td> </tr> <tr> <td>0</td> <td>No</td> </tr> </table>	1	Yes	0	No														
1	Yes																				
0	No																				
408	treat_inot_time <i>Show the field ONLY if: [treat_inot] = '1'</i>	How many days on inotropic support	text (number)																		
409	treat_antiinflam	Anti-inflammatory treatment <i>You can choose several answers if needed</i>	checkbox, Required <table border="1"> <tr> <td>0</td> <td>treat_antiinflam__0</td> <td>No</td> </tr> <tr> <td>1</td> <td>treat_antiinflam__1</td> <td>Corticosteroids</td> </tr> <tr> <td>2</td> <td>treat_antiinflam__2</td> <td>Azithromycin</td> </tr> <tr> <td>3</td> <td>treat_antiinflam__3</td> <td>Biologics (e.g. anakinra, tocilizumab, siltuximab, ect.)</td> </tr> <tr> <td>4</td> <td>treat_antiinflam__4</td> <td>Immunoglobulins</td> </tr> <tr> <td>5</td> <td>treat_antiinflam__5</td> <td>Other</td> </tr> </table>	0	treat_antiinflam__0	No	1	treat_antiinflam__1	Corticosteroids	2	treat_antiinflam__2	Azithromycin	3	treat_antiinflam__3	Biologics (e.g. anakinra, tocilizumab, siltuximab, ect.)	4	treat_antiinflam__4	Immunoglobulins	5	treat_antiinflam__5	Other
0	treat_antiinflam__0	No																			
1	treat_antiinflam__1	Corticosteroids																			
2	treat_antiinflam__2	Azithromycin																			
3	treat_antiinflam__3	Biologics (e.g. anakinra, tocilizumab, siltuximab, ect.)																			
4	treat_antiinflam__4	Immunoglobulins																			
5	treat_antiinflam__5	Other																			
410	treat_steroid <i>Show the field ONLY if: [treat_antiinflam(1)] = '1' and [pims_yn] = '0'</i>	Specify dose, interval and dates corticosteroids was given	text																		
411	treat_azithro <i>Show the field ONLY if: [treat_antiinflam(2)] = '1'</i>	Specify dose, interval and dates azithromycin was given	text																		
412	treat_biol <i>Show the field ONLY if: [treat_antiinflam(3)] = '1' and [pims_yn] = '0'</i>	Specify drug, dose, interval and dates of biological given	text																		
413	treat_ivig <i>Show the field ONLY if: [treat_antiinflam(4)] = '1' and [pims_yn] = '0'</i>	Specify drug, dose, interval and dates of immunoglobulins given	text																		
414	treat_antiinflam_other <i>Show the field ONLY if: [treat_antiinflam(5)] = '1'</i>	Which other anti-inflammatory drug was given and in which dose, interval and dates	text																		
415	treat_antiviral	Antiviral treatment <i>You can choose several answers if needed</i>	checkbox, Required <table border="1"> <tr> <td>0</td> <td>treat_antiviral__0</td> <td>No</td> </tr> <tr> <td>1</td> <td>treat_antiviral__1</td> <td>Hydroxychloroquine</td> </tr> <tr> <td>2</td> <td>treat_antiviral__2</td> <td>Lopinavir/ritonavir</td> </tr> <tr> <td>3</td> <td>treat_antiviral__3</td> <td>Remdesivir</td> </tr> <tr> <td>4</td> <td>treat_antiviral__4</td> <td>Other</td> </tr> </table>	0	treat_antiviral__0	No	1	treat_antiviral__1	Hydroxychloroquine	2	treat_antiviral__2	Lopinavir/ritonavir	3	treat_antiviral__3	Remdesivir	4	treat_antiviral__4	Other			
0	treat_antiviral__0	No																			
1	treat_antiviral__1	Hydroxychloroquine																			
2	treat_antiviral__2	Lopinavir/ritonavir																			
3	treat_antiviral__3	Remdesivir																			
4	treat_antiviral__4	Other																			
416	treat_hydro <i>Show the field ONLY if: [treat_antiviral(1)] = '1'</i>	Specify dose, interval and dates hydroxychloroquin was given	text																		

417	treat_lopi <i>Show the field ONLY if: [treat_antiviral(2)] = '1'</i>	Specify dose, interval and dates lopinavir/ritonavir was given	text															
418	treat_remd <i>Show the field ONLY if: [treat_antiviral(3)] = '1'</i>	Specify dose, interval and dates remdesivir was given	text															
419	treat_antiviral_other <i>Show the field ONLY if: [treat_antiviral(4)] = '1'</i>	Which other antiviral drug was given and in which dose, interval and dates	text															
420	comp	Section Header: <i>Complications</i> Complications <i>You can choose several answers if needed</i>	checkbox, Required <table border="1"> <tr> <td>0</td> <td>comp__0</td> <td>No</td> </tr> <tr> <td>1</td> <td>comp__1</td> <td>Vascular/Cardiac</td> </tr> <tr> <td>2</td> <td>comp__2</td> <td>Neurologic</td> </tr> <tr> <td>3</td> <td>comp__3</td> <td>Superinfection</td> </tr> <tr> <td>4</td> <td>comp__4</td> <td>Other</td> </tr> </table>	0	comp__0	No	1	comp__1	Vascular/Cardiac	2	comp__2	Neurologic	3	comp__3	Superinfection	4	comp__4	Other
0	comp__0	No																
1	comp__1	Vascular/Cardiac																
2	comp__2	Neurologic																
3	comp__3	Superinfection																
4	comp__4	Other																
421	comp_other <i>Show the field ONLY if: [comp(4)] = '1'</i>	Which other complication	text, Required															
422	comp_card <i>Show the field ONLY if: [comp(1)] = '1'</i>	Specify vascular/cardiac complication	text, Required															
423	comp_neuro <i>Show the field ONLY if: [comp(2)] = '1'</i>	Specify neurological complication	text, Required															
424	comp_infec <i>Show the field ONLY if: [comp(3)] = '1'</i>	Specify superinfection	text, Required															
425	trans_index	Section Header: <i>Transmission / exposure</i> Exposure to presumed index case <i>Please write down the person by whom the child was likely infected</i>	radio, Required <table border="1"> <tr> <td>0</td> <td>No</td> </tr> <tr> <td>1</td> <td>Yes, SARS-CoV-2 confirmed</td> </tr> <tr> <td>2</td> <td>Yes, without confirmation</td> </tr> <tr> <td>99</td> <td>Unknown</td> </tr> </table>	0	No	1	Yes, SARS-CoV-2 confirmed	2	Yes, without confirmation	99	Unknown							
0	No																	
1	Yes, SARS-CoV-2 confirmed																	
2	Yes, without confirmation																	
99	Unknown																	
426	trans_index_spec <i>Show the field ONLY if: [trans_index] = '1' or [trans_index] = '2'</i>	Specify relation and age (e.g. brother, 15 years)	text, Required															
427	trans_further	Further cases in household <i>Please do not include the index case if mentioned in the question before</i>	radio, Required <table border="1"> <tr> <td>0</td> <td>No</td> </tr> <tr> <td>1</td> <td>Yes, SARS-CoV-2 confirmed</td> </tr> <tr> <td>2</td> <td>Yes, without confirmation</td> </tr> <tr> <td>99</td> <td>Unknown</td> </tr> </table>	0	No	1	Yes, SARS-CoV-2 confirmed	2	Yes, without confirmation	99	Unknown							
0	No																	
1	Yes, SARS-CoV-2 confirmed																	
2	Yes, without confirmation																	
99	Unknown																	
428	trans_further_spec <i>Show the field ONLY if: [trans_further] = '1' or [trans_further] = '2'</i>	Specify relation and age (e.g. brother, 15 years)	text, Required															
429	trans_further_out	Further cases outside household	radio, Required <table border="1"> <tr> <td>0</td> <td>No</td> </tr> <tr> <td>1</td> <td>Yes, SARS-CoV-2 confirmed</td> </tr> <tr> <td>2</td> <td>Yes, without confirmation</td> </tr> <tr> <td>99</td> <td>Unknown</td> </tr> </table>	0	No	1	Yes, SARS-CoV-2 confirmed	2	Yes, without confirmation	99	Unknown							
0	No																	
1	Yes, SARS-CoV-2 confirmed																	
2	Yes, without confirmation																	
99	Unknown																	
430	trans_further_out_spec	Specify relation and age (e.g. brother, 15 years)	text, Required															

	Show the field ONLY if: [trans_further_out] = '1' or [trans_further_out] = '2'								
431	email Show the field ONLY if: [pims_yn] = '1'	Section Header: <i>Email</i> What is your email address? This will only be used to send you the PIMS-TS follow-up questionnaire 4-6 weeks after your patient has been discharged	text (email)						
432	sarscov2_infection_questionnaire_complete	Section Header: <i>Form Status</i> Complete?	dropdown <table border="1"> <tr><td>0</td><td>Incomplete</td></tr> <tr><td>1</td><td>Unverified</td></tr> <tr><td>2</td><td>Complete</td></tr> </table>	0	Incomplete	1	Unverified	2	Complete
0	Incomplete								
1	Unverified								
2	Complete								
Instrument: PIMS-TS follow up (pimsts_follow_up)  Enabled as survey ^ Collapse									
433	pims_fol_date	Section Header: <i>PIMS-TS follow-up 4-6 weeks after discharge If some of the information is not available you can leave the fields empty</i> Date of follow-up	text (date_dmy)						
434	pims_fol_weight	Current weight in kg	text						
435	pims_fol_oxy	Oxygen saturation	text						
436	pims_fol_hr	Heart rate per min	text						
437	pims_fol_bps	Systolic blood pressure in mmHg	text						
438	pims_fol_bpd	Diastolic blood pressure in mmHg	text						
439	pims_act	Section Header: <i>Is the child back to normal activity?</i> General activity	radio (Matrix) <table border="1"> <tr><td>1</td><td>Yes</td></tr> <tr><td>0</td><td>No</td></tr> </table>	1	Yes	0	No		
1	Yes								
0	No								
440	pims_sch	Kindergarten/school	radio (Matrix) <table border="1"> <tr><td>1</td><td>Yes</td></tr> <tr><td>0</td><td>No</td></tr> </table>	1	Yes	0	No		
1	Yes								
0	No								
441	pims_sport	Sport	radio (Matrix) <table border="1"> <tr><td>1</td><td>Yes</td></tr> <tr><td>0</td><td>No</td></tr> </table>	1	Yes	0	No		
1	Yes								
0	No								
442	pims_act_spec Show the field ONLY if: [pims_act]='0'	Specify how the general activity is still decreased	notes						
443	pims_scho_spec Show the field ONLY if: [pims_sch]='0'	Specify how the activity at school/kindergarten is still decreased	notes						
444	pims_sport_spec Show the field ONLY if: [pims_sport]='0'	Specify how the activity at sport is still decreased	notes						
445	pims_fol_fever	Section Header: <i>Symptoms</i> Fever	radio (Matrix) <table border="1"> <tr><td>1</td><td>Present</td></tr> <tr><td>0</td><td>Not present</td></tr> <tr><td>99</td><td>Unknown</td></tr> </table>	1	Present	0	Not present	99	Unknown
1	Present								
0	Not present								
99	Unknown								
446	pims_fol_resp_dis	Respiratory distress	radio (Matrix) <table border="1"> <tr><td>1</td><td>Present</td></tr> <tr><td>0</td><td>Not present</td></tr> <tr><td>99</td><td>Unknown</td></tr> </table>	1	Present	0	Not present	99	Unknown
1	Present								
0	Not present								
99	Unknown								
447	pims_fol_cough	Cough	radio (Matrix) <table border="1"> <tr><td>1</td><td>Present</td></tr> <tr><td>0</td><td>Not present</td></tr> <tr><td>99</td><td>Unknown</td></tr> </table>	1	Present	0	Not present	99	Unknown
1	Present								
0	Not present								
99	Unknown								

448	pims_fol_abdo	Abdominal pain	radio (Matrix) <table border="1"> <tr><td>1</td><td>Present</td></tr> <tr><td>0</td><td>Not present</td></tr> <tr><td>99</td><td>Unknown</td></tr> </table>	1	Present	0	Not present	99	Unknown
1	Present								
0	Not present								
99	Unknown								
449	pims_fol_colit	Colitis/ileitis	radio (Matrix) <table border="1"> <tr><td>1</td><td>Present</td></tr> <tr><td>0</td><td>Not present</td></tr> <tr><td>99</td><td>Unknown</td></tr> </table>	1	Present	0	Not present	99	Unknown
1	Present								
0	Not present								
99	Unknown								
450	pims_fol_hep	Hepato/Splenomegaly	radio (Matrix) <table border="1"> <tr><td>1</td><td>Present</td></tr> <tr><td>0</td><td>Not present</td></tr> <tr><td>99</td><td>Unknown</td></tr> </table>	1	Present	0	Not present	99	Unknown
1	Present								
0	Not present								
99	Unknown								
451	pims_fol_hyper	Hypertension	radio (Matrix) <table border="1"> <tr><td>1</td><td>Present</td></tr> <tr><td>0</td><td>Not present</td></tr> <tr><td>99</td><td>Unknown</td></tr> </table>	1	Present	0	Not present	99	Unknown
1	Present								
0	Not present								
99	Unknown								
452	pims_fol_rash	Rash	radio (Matrix) <table border="1"> <tr><td>1</td><td>Present</td></tr> <tr><td>0</td><td>Not present</td></tr> <tr><td>99</td><td>Unknown</td></tr> </table>	1	Present	0	Not present	99	Unknown
1	Present								
0	Not present								
99	Unknown								
453	pims_fol_head	Headache	radio (Matrix) <table border="1"> <tr><td>1</td><td>Present</td></tr> <tr><td>0</td><td>Not present</td></tr> <tr><td>99</td><td>Unknown</td></tr> </table>	1	Present	0	Not present	99	Unknown
1	Present								
0	Not present								
99	Unknown								
454	pims_fol_oth	Other symptoms	radio (Matrix) <table border="1"> <tr><td>1</td><td>Present</td></tr> <tr><td>0</td><td>Not present</td></tr> <tr><td>99</td><td>Unknown</td></tr> </table>	1	Present	0	Not present	99	Unknown
1	Present								
0	Not present								
99	Unknown								
455	pims_fol_oth_spec <small>Show the field ONLY if: [pims_fol_oth]=1</small>	Please specify other symptoms	notes, Required						
456	pims_fol_hb	Section Header: <i>Laboratory</i> Haemoglobin level in g/l <i>if not done you can leave the field empty</i>	text (number)						
457	pims_fol_neutro	Neutrophils level in G/l <i>if not done you can leave the field empty</i>	text (number)						
458	pims_fol_lymph	Lymphocytes level in G/l <i>if not done you can leave the field empty</i>	text (number)						
459	pims_fol_plt	Platelets level in G/l <i>if not done you can leave the field empty</i>	text (number)						
460	pims_fol_crp	CRP level in mg/l <i>if not done you can leave the field empty</i>	text (number)						
461	pims_fol_esr	ESR in mm/1.h <i>if not done you can leave the field empty</i>	text (number)						
462	pims_fol_fer	Ferritin level in µg/l <i>if not done you can leave the field empty</i>	text (number)						
463	pims_fol_ddim	D-dimer level in g/l <i>if not done you can leave the field empty</i>	text (number)						
464	pims_fol_fib	Fibrinogen level in g/l <i>if not done you can leave the field empty</i>	text						
465	pims_fol_trop	Troponin T level in ng/l <i>if not done you can leave the field empty</i>	text (number)						

466	pims_fol_bnp	NT-pro-BNP level in pg/l <i>if not done you can leave the field empty</i>	text (number)				
467	pims_fol_alat	ALAT level in mmol/l <i>if not done you can leave the field empty</i>	text (number)				
468	pims_fol_creat	Creatinine level in $\mu\text{mol/l}$ <i>if not done you can leave the field empty</i>	text (number)				
469	pims_fol_echo	Section Header: <i>Cardiac diagnostic</i> Echocardiography at follow-up	radio, Required <table border="1"> <tr> <td>1</td> <td>Done</td> </tr> <tr> <td>0</td> <td>Not done</td> </tr> </table>	1	Done	0	Not done
1	Done						
0	Not done						
470	pims_fol_echo_date <i>Show the field ONLY if: [pims_fol_echo]=1</i>	Date of the echocardiography	text (date_dmy)				
471	pims_fol_echo_dys <i>Show the field ONLY if: [pims_fol_echo]=1</i>	Was there left ventricular systolic dysfunction?	yesno <table border="1"> <tr> <td>1</td> <td>Yes</td> </tr> <tr> <td>0</td> <td>No</td> </tr> </table>	1	Yes	0	No
1	Yes						
0	No						
472	pims_fol_echo_ef <i>Show the field ONLY if: [pims_fol_echo_dys]=1</i>	What was the LVEF in %?	text (number)				
473	pims_fol_echo_fs <i>Show the field ONLY if: [pims_fol_echo_dys]=1</i>	What was the LVFS in %?	text				
474	pims_fol_echo_dys_r <i>Show the field ONLY if: [pims_fol_echo]=1</i>	Was there right ventricular systolic dysfunction?	yesno <table border="1"> <tr> <td>1</td> <td>Yes</td> </tr> <tr> <td>0</td> <td>No</td> </tr> </table>	1	Yes	0	No
1	Yes						
0	No						
475	pims_fol_echo_tapse <i>Show the field ONLY if: [pims_fol_echo_dys_r]=1</i>	What was the TAPSE in mm?	text				
476	pims_fol_echo_fac <i>Show the field ONLY if: [pims_fol_echo_dys_r]=1</i>	What was the FAC in %?	text				
477	pims_fol_echo_dys_dia <i>Show the field ONLY if: [pims_fol_echo]=1</i>	Was there left or right ventricular diastolic dysfunction?	yesno <table border="1"> <tr> <td>1</td> <td>Yes</td> </tr> <tr> <td>0</td> <td>No</td> </tr> </table>	1	Yes	0	No
1	Yes						
0	No						
478	pims_fol_echo_ewave <i>Show the field ONLY if: [pims_fol_echo_dys_dia]=1</i>	What was the lateral E' wave velocity in cm/s	text (number)				
479	pims_fol_echo_lawave <i>Show the field ONLY if: [pims_fol_echo_dys_dia]=1</i>	What was the lateral A' wave velocity in cm/s?	text (number)				
480	pims_fol_echo_mewave <i>Show the field ONLY if: [pims_fol_echo_dys_dia]=1</i>	What was the medial E' wave velocity in cm/s	text (number)				
481	pims_fol_echo_mawave <i>Show the field ONLY if: [pims_fol_echo_dys_dia]=1</i>	What was the medial A' wave velocity in cm/s?	text (number)				
482	pims_fol_echo_ivrt <i>Show the field ONLY if: [pims_fol_echo_dys_dia]=1</i>	What was the IVRT (isovolumetric relaxation time) in ms?	text (number)				
483	pims_fol_echo_eff <i>Show the field ONLY if: [pims_fol_echo]=1</i>	Was there pericardial effusion?	yesno <table border="1"> <tr> <td>1</td> <td>Yes</td> </tr> <tr> <td>0</td> <td>No</td> </tr> </table>	1	Yes	0	No
1	Yes						
0	No						
484	pims_fol_echo_dil	Was there any coronary artery dilatation?	yesno				

	Show the field ONLY if: [pims_fol_echo]=1		<table border="1"> <tr> <td>1</td> <td>Yes</td> </tr> <tr> <td>0</td> <td>No</td> </tr> </table>	1	Yes	0	No																	
1	Yes																							
0	No																							
485	pims_fol_echo_spec Show the field ONLY if: [pims_fol_echo_dil]=1	Please specify the location of the dilatation	checkbox <table border="1"> <tr> <td>1</td> <td>pims_fol_echo_spec__1</td> <td>Right proximal coronary artery (RCA)</td> </tr> <tr> <td>2</td> <td>pims_fol_echo_spec__2</td> <td>Right mid coronary artery (RCA)</td> </tr> <tr> <td>3</td> <td>pims_fol_echo_spec__3</td> <td>Left main coronary artery (LMCA)</td> </tr> <tr> <td>4</td> <td>pims_fol_echo_spec__4</td> <td>Left anterior descending artery (LAD)</td> </tr> <tr> <td>5</td> <td>pims_fol_echo_spec__5</td> <td>Left circumflex coronary artery (LCX)</td> </tr> </table>	1	pims_fol_echo_spec__1	Right proximal coronary artery (RCA)	2	pims_fol_echo_spec__2	Right mid coronary artery (RCA)	3	pims_fol_echo_spec__3	Left main coronary artery (LMCA)	4	pims_fol_echo_spec__4	Left anterior descending artery (LAD)	5	pims_fol_echo_spec__5	Left circumflex coronary artery (LCX)						
1	pims_fol_echo_spec__1	Right proximal coronary artery (RCA)																						
2	pims_fol_echo_spec__2	Right mid coronary artery (RCA)																						
3	pims_fol_echo_spec__3	Left main coronary artery (LMCA)																						
4	pims_fol_echo_spec__4	Left anterior descending artery (LAD)																						
5	pims_fol_echo_spec__5	Left circumflex coronary artery (LCX)																						
486	pims_fol_echo_dil1 Show the field ONLY if: [pims_fol_echo_spec(1)]=1	What was the Boston z-score of the right proximal coronary artery?	text																					
487	pims_fol_echo_dil2 Show the field ONLY if: [pims_fol_echo_spec(2)]=1	What was the Boston z-score of the right mid coronary artery?	text																					
488	pims_fol_echo_dil3 Show the field ONLY if: [pims_fol_echo_spec(3)]=1	What was the Boston z-score of the left main coronary artery?	text																					
489	pims_fol_echo_dil4 Show the field ONLY if: [pims_fol_echo_spec(4)]=1	What was the Boston z-score of the left main anterior descending artery?	text																					
490	pims_fol_echo_dil5 Show the field ONLY if: [pims_fol_echo_spec(5)]=1	What was the Boston z-score of the left main anterior circumflex artery?	text																					
491	echo_2_oth Show the field ONLY if: [pims_fol_echo]=1	Was there any other abnormality on echocardiography?	text																					
492	pims_fol_ecg	ECG findings	checkbox, Required <table border="1"> <tr> <td>0</td> <td>pims_fol_ecg__0</td> <td>Not done</td> </tr> <tr> <td>1</td> <td>pims_fol_ecg__1</td> <td>Normal</td> </tr> <tr> <td>2</td> <td>pims_fol_ecg__2</td> <td>AV block</td> </tr> <tr> <td>3</td> <td>pims_fol_ecg__3</td> <td>Abnormal repolarisation</td> </tr> <tr> <td>4</td> <td>pims_fol_ecg__4</td> <td>Prolonged QT interval</td> </tr> <tr> <td>5</td> <td>pims_fol_ecg__5</td> <td>Tachyarrhythmia</td> </tr> <tr> <td>6</td> <td>pims_fol_ecg__6</td> <td>Other abnormality</td> </tr> </table>	0	pims_fol_ecg__0	Not done	1	pims_fol_ecg__1	Normal	2	pims_fol_ecg__2	AV block	3	pims_fol_ecg__3	Abnormal repolarisation	4	pims_fol_ecg__4	Prolonged QT interval	5	pims_fol_ecg__5	Tachyarrhythmia	6	pims_fol_ecg__6	Other abnormality
0	pims_fol_ecg__0	Not done																						
1	pims_fol_ecg__1	Normal																						
2	pims_fol_ecg__2	AV block																						
3	pims_fol_ecg__3	Abnormal repolarisation																						
4	pims_fol_ecg__4	Prolonged QT interval																						
5	pims_fol_ecg__5	Tachyarrhythmia																						
6	pims_fol_ecg__6	Other abnormality																						
493	pims_fol_ecg_block Show the field ONLY if: [pims_fol_ecg(2)]=1	Specify degree of AV Block	text, Required																					
494	pims_fol_ecg_other Show the field ONLY if: [pims_fol_ecg(6)]=1	Specify other abnormality	notes, Required																					
495	ecg_2_date Show the field ONLY if: [pims_fol_ecg(1)]=1 or [pims_fol_ecg(2)]=1 or [pims_fol_ecg(3)]=1 or [pims_fol_ecg(4)]=1 or [pims_fol_ecg(5)]=1 or [pims_fol_ecg(6)]=1	Date of the ECG	text (date_dmy), Required																					
496	pims_fol_pred	Section Header: <i>Treatment</i>	yesno__																					

		Prednisolone	<table border="1"> <tr> <td>1</td> <td>Yes</td> </tr> <tr> <td>0</td> <td>No</td> </tr> </table>	1	Yes	0	No
1	Yes						
0	No						
497	pims_fol_pred_dose <i>Show the field ONLY if: [pims_fol_pred]=1</i>	Please specify dose of prednisolone in mg/kg/day	text				
498	pims_fol_pred_start <i>Show the field ONLY if: [pims_fol_pred]=1</i>	Date when Prednisolone was started	text (date_dmy)				
499	pims_fol_pred_stop <i>Show the field ONLY if: [pims_fol_pred]=1</i>	Date when prednisolone was stopped	text (date_dmy)				
500	pims_fol_pred_cont <i>Show the field ONLY if: [pims_fol_pred]=1</i>	Projected duration in days if not stopped	text (date_dmy)				
501	pims_fol_lhep	Low-molecular-weight heparin	yesno <table border="1"> <tr> <td>1</td> <td>Yes</td> </tr> <tr> <td>0</td> <td>No</td> </tr> </table>	1	Yes	0	No
1	Yes						
0	No						
502	pims_fol_lhep_dose <i>Show the field ONLY if: [pims_fol_lhep]=1</i>	Please specify dose of LMWH in mg/kg/day	text				
503	pims_fol_lhep_start <i>Show the field ONLY if: [pims_fol_lhep]=1</i>	Date when LMWH was started	text (date_dmy)				
504	pims_fol_lhep_stop <i>Show the field ONLY if: [pims_fol_lhep]=1</i>	Date when LMWH was stopped	text (date_dmy)				
505	pims_fol_lhep_cont <i>Show the field ONLY if: [pims_fol_lhep]=1</i>	Projected duration in days if not stopped	text (date_dmy)				
506	pims_fol_asp	Aspirin	yesno <table border="1"> <tr> <td>1</td> <td>Yes</td> </tr> <tr> <td>0</td> <td>No</td> </tr> </table>	1	Yes	0	No
1	Yes						
0	No						
507	pims_fol_asp_dose <i>Show the field ONLY if: [pims_fol_asp]=1</i>	Please specify dose of aspirine in mg/kg/day	text				
508	pims_fol_asp_start <i>Show the field ONLY if: [pims_fol_asp]=1</i>	Date when aspirin was started	text (date_dmy)				
509	pims_fol_asp_stop <i>Show the field ONLY if: [pims_fol_asp]=1</i>	Date when aspirin was stopped	text (date_dmy)				
510	pims_fol_asp_cont <i>Show the field ONLY if: [pims_fol_asp]=1</i>	Projected duration in days if not stopped	text (date_dmy)				
511	pims_fol_treat_oth	Other treatment	yesno, Required <table border="1"> <tr> <td>1</td> <td>Yes</td> </tr> <tr> <td>0</td> <td>No</td> </tr> </table>	1	Yes	0	No
1	Yes						
0	No						
512	treat_oth_spec <i>Show the field ONLY if: [pims_fol_treat_oth]=1</i>	Please other treatment specify, including names, dose, start and stop date	notes				
513	pimsts_follow_up_complete	Section Header: <i>Form Status</i> Complete?	dropdown <table border="1"> <tr> <td>0</td> <td>Incomplete</td> </tr> </table>	0	Incomplete		
0	Incomplete						

