

Original article | Published 10 May 2017 | doi:10.4414/smw.2017.14435

Cite this as: Swiss Med Wkly. 2017;147:w14435

Adapting the “Chester step test” to predict peak oxygen uptake in children

Albane B.R. Maggio^{a,b}, Philippe Vuistiner^c, Antoinette Crettenand^c, René Tabin^d, Xavier E. Martin^a, Maurice Beghetti^{e,b}, Nathalie J. Farpour-Lambert^{f,g}, Olivier Deriaz^b

^a Paediatric Obesity Consultation, Service of Paediatric Specialties, Department of Child and Adolescent, University Hospitals of Geneva and University of Geneva, Switzerland

^b Centre Universitaire de Cardiologie Pédiatrique, University of Lausanne and Geneva, Switzerland

^c Institute for Research in Rehabilitation, Clinique Romande de Réadaptation SuvaCare, Sion, Switzerland.

^d Paediatric Department, Romand Valais Hospital, Sion, Switzerland

^e Paediatric Cardiology Unit, Service of Paediatric Specialties, Department of Child and Adolescent, University Hospitals of Geneva and University of Geneva, Switzerland

^f Obesity Prevention and Care Programme “Contrepoids”, Service of Therapeutic Education for Chronic Diseases, Department of Community Medicine, Primary Care and Emergency, University Hospitals of Geneva and University of Geneva, Switzerland

^g Paediatric Sports Medicine Consultation, Service of General Paediatrics, Department of Child and Adolescent, University Hospitals of Geneva and University of Geneva, Switzerland

Summary

AIM OF THE STUDY: Maximal exercise testing may be difficult to perform in clinical practice, especially in obese children who have low cardiorespiratory fitness and exercise tolerance. We aimed to elaborate a model predicting peak oxygen consumption (VO₂) in lean and obese children with use of the submaximal Chester step test.

METHODS: We performed a maximal step test, which consisted of 2-minute stages with increasing intensity to exhaustion, in 169 lean and obese children (age range: 7–16 years). VO₂ was measured with indirect calorimetry. A statistical Tobit model was used to predict VO₂ from age, gender, body mass index (BMI) z-score and intensity levels. Estimated VO₂peak was then determined from the heart rate-VO₂ linear relationship extrapolated to maximal heart rate (220 minus age, in beats.min⁻¹).

RESULTS: VO₂ (ml/kg/min) can be predicted using the following equation: $VO_2 = 22.82 - [0.68 \cdot BMI \text{ z-score}] - [0.46 \cdot \text{age (years)}] - [0.93 \cdot \text{gender (male = 0; female = 1)}] + [4.07 \cdot \text{intensity level (stage 1, 2, 3 etc.)}] - [0.24 \cdot BMI \text{ z-score} \cdot \text{intensity level}] - [0.34 \cdot \text{gender} \cdot \text{intensity level}]$. VO₂ was lower in participants with high BMI z-scores and in female subjects.

CONCLUSION: The Chester step test can assess cardiorespiratory fitness in lean and obese children in clinical settings. Our adapted equation allows the Chester step test to be used to estimate peak aerobic capacity in children.

Key words: cardiorespiratory fitness test, prediction equation, submaximal test, children, obesity

Introduction

The rapid increase in the prevalence of childhood obesity worldwide raises major concerns for global health [1]. Early diagnosis and management are essential to limit the development of comorbidities [2]. In children, treatment aims to limit weight gain during growth, and improve well-being and physical capacity, in order to prevent early comorbidities. One of the pillars of the treatment is engagement in regular physical activity [3], which has a beneficial effect on body composition as well as on cardiovascular disease risks [4]. Indeed, it is known that high cardiorespiratory fitness in youth is associated with a lower risk of myocardial infarction in later life [5]. It is important to be able to measure cardiorespiratory fitness in a clinical setting, not only to assess the risk of disease but also to evaluate the effects of physical activity programmes.

Maximal oxygen consumption (VO_2max) is considered by the World Health Organization (WHO) to be the best cardiorespiratory fitness indicator [6] and is commonly assessed with treadmill or bike tests [7–9]. However, implementation of such tests has some limitations. First, they need expensive specialised equipment and expertise, limiting their use in clinical practice. Second, reference values are based on normal-weight populations and seem to underestimate the true VO_2max in obese participants [10, 11]. These tests require maximal effort, which is often difficult to obtain from obese children. Indeed, based on our clinical practice, obese children experience rapid discomfort with signs of physical exhaustion within a few minutes. Consequently, maximal cardiorespiratory fitness tests are more difficult to perform in this population, which is why peak oxygen consumption is used. Therefore, a submaximal test, easy to perform and well tolerated by children, is needed. It is possible that a specific equation for predicting VO_2 may also be needed for children because mechanical efficiencies may be different in children and adults [12].

It should be kept in mind that VO_2max , expressed as an absolute value (e.g., in $\text{L}\cdot\text{O}_2\cdot\text{min}^{-1}$), better represents the performance of non-weight-bearing activities such as cycling, swimming, handgrip force, etc. In this situation, obese individuals are less disadvantaged and sometimes perform better than control subjects [13]. However, obese individuals have more difficulties with daily activities like walking, sitting up/down and climbing stairs, because these activities are weight bearing. For this reason the VO_2max , expressed as a relative value (e.g., in $\text{L}\cdot\text{O}_2\cdot\text{kg}^{-1}\cdot\text{min}^{-1}$), better represents the ability of obese individuals to perform everyday tasks.

The Chester step test is a submaximal weight bearing test in which the subject has to step up onto and down from a bench (here 25 cm high) at an increasing pace to provide an estimate of peak oxygen consumption. A similar test was described in the 1960s by Margaria et al. [14], and was recently validated for adults [15]. Other studies have previously validated step tests in adults and children [16]. The Chester step test has the advantage of being easy to perform, is cheap and requires only a few light materials: a bench, a metronome and a device for heart rate measurement.

Finally, there is a need to assess whether earlier published VO_2 predictions determined in adults [15, 16] are also applicable in children.

The aims of the study were to (1) elaborate an equation allowing the estimation of peak oxygen consumption using the Chester step test both in lean and obese children and adolescents and (2) compare these results with other prediction equations published in the literature.

Materials and methods

This was a cross-sectional study including lean, overweight and obese children and adolescents aged 8 to 16 years. The tests were made not only for research purposes, but also to identify sedentary children at risk of cardiovascular diseases in order to initiate an activity programme. Obese participants were recruited at a paediatric obesity consultation at the secondary care public hospital of Sion (Wallis, Switzerland) between September 2009 and September 2012. Overweight and lean children with no regular physical activity (less than 5 hours per week including school activities, based on a physical activity questionnaire) were recruited at different schools located in Wallis during the same period. All participants came from the same demographic area (urban and rural) and were excluded from the study if they: (1) had an orthopaedic condition or a disease (e.g. cardiovascular disease) limiting physical activity; or (2) had a fracture or severe trauma of the lower limbs in the preceding year.

After they had been informed about the study, written consent was obtained from the parents and oral assent from the children. The protocol was approved by the ethics committee “Commission cantonale valaisanne d’éthique médicale ICHV” (no. CCVEM 037/09).

Body weight (kg) in light clothes and standing height (cm) were measured and body mass index (BMI) was calculated as weight / height squared ($\text{kg}\cdot\text{m}^{-2}$). The BMI z-scores were computed from the WHO references [17], to adjust BMI for age and

gender. Overweight was defined as a BMI z-score between 1 and 2, and obesity as a BMI z-score greater than 2.

All participants had to climb up and down a 25 cm high step. This height was chosen to be optimal for the participants who might have had difficulties with the test (the youngest children of our study had a standing height of about 1.30 m) [18]. The rate was increased progressively from 15 to 35 cycles per minute with 5 cycles per minute increases [19]. According to the protocol, the test consisted of five stages, each lasting 2 minutes. Heart rate was recorded at the end of each stage using a heart rate sensor belt (Polar®). The oxygen consumption (VO_2 , $\text{ml}\cdot\text{kg}^{-1}\cdot\text{min}^{-1}$) was measured with a breath-by-breath analyzer Metamax (CORTEX Biophysik GmbH, Walter-Köhn-Str. 2d, 04356 Leipzig/Germany) throughout the test, and values for the last 30 seconds of each stage were kept for calculations. The participants were encouraged to continue until reaching criteria for maximal test: clinical signs of exhaustion or a heart rate higher than 85% of the theoretical age predicted maximum (220 minus age) and a respiratory quotient over 1.0 [8, 20]. We did not use the VO_2 plateau as a criterion, as there is no such plateau in children [21].

The $\text{VO}_{2\text{peak}}$ ($\text{ml}\cdot\text{kg}^{-1}\cdot\text{min}^{-1}$) was also predicted using an available equation based on results in adults: the calculator for the Chester step test (ST calculator) (ASSIST creative resources Limited, Wrexham, Wales, <http://the-chester-step-test-calculator.software.informer.com/6.0/>) in which the maximal heart rate was defined as 220 minus age in years. This calculator predicts $\text{VO}_{2\text{peak}}$ using a linear extrapolation through the heart rate recorded at each intensity level and estimates VO_2 . The source of these VO_2 values is not reported, but they depend only on the participants' ages and the step height. Both VO_2 and heart rate were measured at each intensity level; thus participants had a maximum of five measurements. As some participants did not reach all levels, we dealt with missing values at highest levels as follows. Since the intensity increased at each level, both VO_2 and heart rate were expected to increase accordingly; thus missing VO_2 values would be at least as high as the last measurement and could then be considered as censored values. To deal with such data, we applied random-effects Tobit regression [22] using the "xttobit" command of Stata. The right-censoring variable was the highest measured VO_2 for each participant, which was considered as the group variable. There were no missing data for the variables of interest.

The aim was to predict VO_2 for each intensity level from age, gender and BMI z-score. We chose those variables because VO_2 is known to be dependent on them [23]. Since 62 subjects achieved the fifth intensity level, the sample size was sufficient to include three covariates, with at least 15 observations per estimated parameter [24]. We first implemented separate models at each intensity level and noticed that the association between BMI z-score and VO_2 increased with intensity, as did the difference between genders. The association with age remained constant through all levels. These observations suggested interactions between level and BMI z-score as well as between level and gender. As the increase in VO_2 was almost constant across intensity levels, we considered this variable as continuous. Therefore, the VO_2 was significantly predicted by age, gender, BMI z-score and intensity levels; including the above mentioned interactions – level \times BMI z-score and level \times gender.

It is not mandatory to have measurements for all five stages in order to estimate $\text{VO}_{2\text{peak}}$. Nevertheless, the more levels obtained, the more precise the estimation can be.

Statistical differences between genders were analysed with the independent Student t-test. We used errors-in-variables regression [25] to compare the $\text{VO}_{2\text{peak}}$ values predicted by the proposed model and by the ST calculator. Linear regression was applied to assess the relationship between the predicted $\text{VO}_{2\text{peak}}$ values and the measured ones (for participants who reached criteria for maximal test as described above).

Differences were considered significant if $p < 0.05$. Statistical analyses were performed using Stata 11.2 (StataCorp 2009, College Station, TX).

Reporting of this study follows the recommendations of the TRIPOD guidelines <https://www.tripod-statement.org/>.

Results

The available data came from 169 children, whose characteristics are summarised in table 1. Mean (\pm standard deviation) age was 11.5 ± 2.0 and mean BMI z-score was 1.2 ± 1.6 . Forty-six percent of the subjects were boys, 53.3% were normal weight, 8.2% overweight and 38.5% obese. Both weight and height, but not age, increased with BMI z-score.

The children performed a Chester step test including a maximum of five intensity levels. One child did not reach the third level and stopped at stage two, 29 stopped at stage three, 77 at stage four and the 62 remaining children reached the fifth intensity level (fig. 1).

Table 1: Participants' characteristics.

	Boys (n = 78)		Girls (n = 91)		p-value (t-test)	Normal (n = 90)		Overweight (n = 14)		Obese (n = 65)		Total (n = 169)	
	Mean	SD	Mean	SD		Mean	SD	Mean	SD	Mean	SD	Mean	SD
Age (years)	11.3	(1.9)	11.7	(2.1)	0.23	11.3	(1.8)	12.1	(1.9)	11.7	(2.1)	11.5	(2.0)
Weight (kg)	51.9	(21.2)	51.0	(21.2)	0.79	37.7	(9.7)	54.8	(14.1)	69.8	(19.8)	51.4	(21.1)
Height (cm)	150.2	(13.0)	149.4	(12.6)	0.70	147.0	(12.5)	153.3	(12.6)	152.9	(12.3)	149.8	(12.7)
BMI z-score	1.3	(1.7)	1.0	(1.6)	0.20	-0.2	(0.7)	1.6	(0.3)	2.9	(0.6)	1.2	(1.6)



Figure 1: Characteristics of the subjects at each maximal intensity level reached. NW = normal weight; OB = obese; OW = overweight

Tobit models were applied to the VO_2 measurements adjusted for age, gender, BMI z-score, and intensity level. BMI z-score and age were negatively associated with VO_2 , and girls had on average lower VO_2 values than boys. The negative effect of BMI z-score on VO_2 was stronger at higher intensity levels, and the gender difference was also greater at higher levels.

This model allows VO_2 values to be estimated at each stage level using the following equation:

$$VO_2 = 22.82 - (0.68 * BMI \text{ z score}) - (0.46 * Age) - (0.93 * Gender) + (4.07 * Stage) - (0.24 * BMI \text{ z score} * Stage) - (0.34 * Gender * Stage),$$

where gender = 0 for boys and 1 for girls, stage = 1 (i.e., 15 cycles per min), 2, 3, etc. BMI z score ranges from -3 to +3 and age is in years. VO_2 is expressed in $ml.kg^{-1}.min^{-1}$. The confidence intervals for these coefficients are given in table 2.

Table 3 gives such VO_2 values at each intensity level for different characteristics of the child (gender, age and BMI z-score). It allows the clinician to

determine easily and very quickly the predicted VO_2 of the subject, knowing the intensity level which was reached and the age and BMI z-score, without the need of the equation.

Furthermore, a good estimation of VO_{2max} can be obtained by calculating the extrapolated VO_2 at the heart rate maximum level, from the linear relationship between VO_2 and heart rate [26]. The VO_{2peak} value is predicted by performing a linear fit between the estimated VO_2 at each level (as given in table 3) and the corresponding measured heart rate. The fitted value at the maximum heart rate (220 minus age) corresponds to the estimated VO_{2peak} .

Figure 2 shows the associations between the measured VO_2 values and those predicted by the ST calculator or by our proposed model. It highlights the wide dispersion of measured VO_2 values at each intensity level, which is at odds with the fixed values suggested by the ST calculator, resulting in unreliable estimations of VO_{2peak} . Our equation allows much more precise predictions which would improve the estimation of VO_{2peak} .

Table 2: Coefficients of the Tobit model for VO₂ prediction.

Covariate	Coefficient	95% Confidence interval	p-value
Intercept	22.82	20.82, 24.82	<0.001
BMI z-score	-0.68	-0.91, -0.44	<0.001
Age (years)	-0.46	-0.63, -0.29	<0.001
Gender	-0.93	-1.70, -0.15	0.019
Stage	4.07	3.94, 4.19	<0.001
BMI z-score * Stage	-0.24	-0.29, -0.19	<0.001
Gender * Stage	-0.34	-0.48, -0.19	<0.001

Table 3: Predicted VO₂ values (mlO₂.kg⁻¹.min⁻¹) according to gender, age, BMI z-score and intensity levels.

Boys							Girls						
Age	BMI z	Intensity level					Age	BMI z	Intensity level				
		I	II	III	IV	V			I	II	III	IV	V
8	-1	24.1	28.4	32.7	37	41.3	8	-1	22.8	26.8	30.8	34.7	38.7
	0	23.2	27.2	31.3	35.4	39.4		0	21.9	25.6	29.4	33.1	36.8
	1	22.3	26.1	29.9	33.7	37.5		1	21	24.5	28	31.5	34.9
	2	21.3	24.9	28.5	32.1	35.7		2	20.1	23.3	26.6	29.8	33.1
	3	20.4	23.8	27.1	30.4	33.8		3	19.2	22.2	25.2	28.2	31.2
9	-1	23.6	27.9	32.2	36.5	40.9	9	-1	22.4	26.3	30.3	34.3	38.3
	0	22.7	26.8	30.8	34.9	39		0	21.4	25.2	28.9	32.6	36.4
	1	21.8	25.6	29.4	33.3	37.1		1	20.5	24	27.5	31	34.5
	2	20.9	24.5	28	31.6	35.2		2	19.6	22.9	26.1	29.3	32.6
	3	20	23.3	26.6	30	33.3		3	18.7	21.7	24.7	27.7	30.7
10	-1	23.2	27.5	31.8	36.1	40.4	10	-1	21.9	25.9	29.8	33.8	37.8
	0	22.2	26.3	30.4	34.4	38.5		0	21	24.7	28.4	32.2	35.9
	1	21.3	25.2	29	32.8	36.6		1	20.1	23.6	27	30.5	34
	2	20.4	24	27.6	31.2	34.7		2	19.1	22.4	25.6	28.9	32.1
	3	19.5	22.8	26.2	29.5	32.8		3	18.2	21.2	24.2	27.2	30.2
11	-1	22.7	27	31.3	35.6	39.9	11	-1	21.4	25.4	29.4	33.4	37.3
	0	21.8	25.8	29.9	34	38		0	20.5	24.2	28	31.7	35.4
	1	20.9	24.7	28.5	32.3	36.2		1	19.6	23.1	26.6	30.1	33.6
	2	19.9	23.5	27.1	30.7	34.3		2	18.7	21.9	25.2	28.4	31.7
	3	19	22.4	25.7	29	32.4		3	17.8	20.8	23.8	26.8	29.8
12	-1	22.2	26.5	30.8	35.2	39.5	12	-1	21	24.9	28.9	32.9	36.9
	0	21.3	25.4	29.4	33.5	37.6		0	20.1	23.8	27.5	31.2	35
	1	20.4	24.2	28	31.9	35.7		1	19.1	22.6	26.1	29.6	33.1
	2	19.5	23.1	26.6	30.2	33.8		2	18.2	21.5	24.7	28	31.2
	3	18.6	21.9	25.2	28.6	31.9		3	17.3	20.3	23.3	26.3	29.3

13	-1	21.8	26.1	30.4	34.7	39	13	-1	20.5	24.5	28.5	32.4	36.4
	0	20.9	24.9	29	33	37.1		0	19.6	23.3	27.1	30.8	34.5
	1	19.9	23.8	27.6	31.4	35.2		1	18.7	22.2	25.6	29.1	32.6
	2	19	22.6	26.2	29.8	33.3		2	17.8	21	24.2	27.5	30.7
	3	18.1	21.4	24.8	28.1	31.5		3	16.8	19.8	22.8	25.8	28.9
14	-1	21.3	25.6	29.9	34.2	38.5	14	-1	20	24	28	32	35.9
	0	20.4	24.5	28.5	32.6	36.7		0	19.1	22.9	26.6	30.3	34
	1	19.5	23.3	27.1	30.9	34.8		1	18.2	21.7	25.2	28.7	32.2
	2	18.6	22.1	25.7	29.3	32.9		2	17.3	20.5	23.8	27	30.3
	3	17.6	21	24.3	27.7	31		3	16.4	19.4	22.4	25.4	28.4

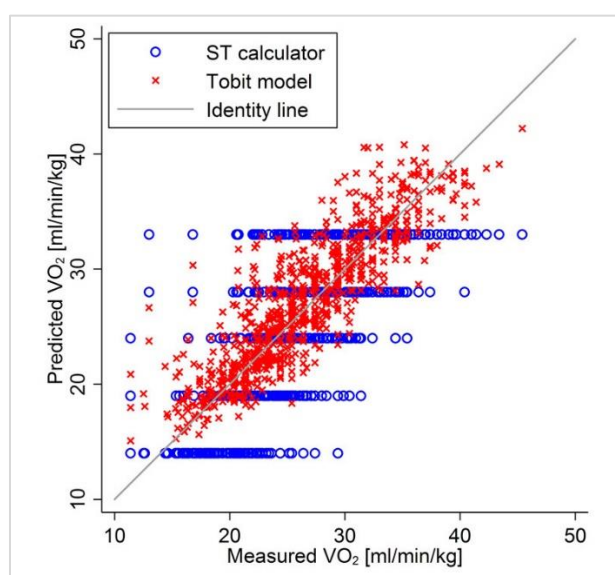


Figure 2: Comparison between the VO_2 peak values predicted by the ST calculator and the Tobit model.

The grey line represents the identity line, the red crosses represent the maximum oxygen consumption (VO_2 peak) predicted from our prediction equation (Tobit model) and the blue circles represent the VO_2 peak calculated from the Chester step test calculator.

Extrapolating our equation prediction to young adults with the same characteristics (male, 22 years and BMI z-score of 0) as used by Buckley et al. [15], we found values similar to those they published for the ST calculator and given in Margaria et al. [14] (table 4).

Stage	I	II	III	IV	V
VO_2 reported by Buckley	14	19	24	28	33
VO_2 reported by Margaria	16	20	24	28	32
VO_2 predicted from our equation	16	20	24	28	32

VO_2 expressed in $mLO_2 \cdot kg^{-1} \cdot min^{-1}$
 First row: VO_2 predicted using the Chester step test calculator and reported from [8].
 Second row: VO_2 predicted by Margaria et al. [27]
 Third row: VO_2 predicted extrapolated from the equation developed in the present study for adults with similar age (22 y), gender and BMI z score (0), as reported in [8].

In an attempt to verify the accuracy of the predicted VO_2 peak value provided by our model, we used the data of participants who reached a >1.0 and a heart rate higher than 85% of the maximum heart rate ($n = 59$). We then compared their highest measured VO_2 value with the VO_2 peak predicted by our model and by the ST calculator. These predicted values are obtained using only the measurements of the first three intensity levels, as would be the case

in a submaximal test (as performed in practice by clinicians). Figure 3 illustrates the associations between measured and predicted VO_2 peak. The confidence intervals (CIs) are computed from the standard error of the prediction; they show that the linear prediction is slightly more accurate with the Tobit model than with the ST calculator.

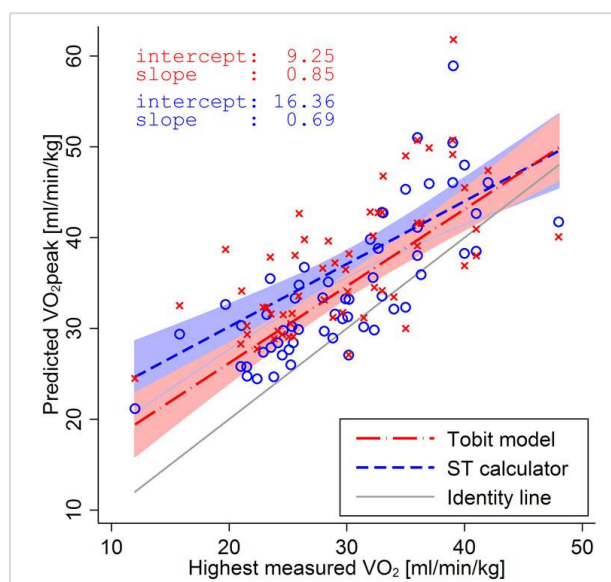


Figure 3: Comparison between the predicted maximum oxygen consumption ($\text{VO}_{2\text{peak}}$) values and the highest measured VO_2 in participants ($n = 59$) reaching criteria for maximal test.

Criteria for maximal test were: a respiratory quotient higher than 1.0 and a heart rate higher than 85% of the estimated maximal heart rate ($220 - \text{age}$).

The predictions were obtained with the Tobit model (present study) (crosses and red line) or with an equation developed from data reported in the literature (ST calculator, open circles and dotted blue line), using the measurements of the first three intensity levels only (sub-maximal test). The grey line represents the identity line.

Using a linear regression model, we found a slope of 0.85 (95% CI 0.66–1.03) and an intercept of 9.25 ($p = 0.002$, 95% CI 3.66–14.84) for the Tobit model. This result suggests that there is an overestimation of predicted $\text{VO}_{2\text{peak}}$ but this is constant throughout all values (the slope is not significantly different from 1). With the $\text{VO}_{2\text{peak}}$ predicted by the ST calculator, the slope is 0.69 (95% CI 0.48–0.90) and the intercept 16.36 ($p < 0.001$, 95% CI 10.02–22.69), which suggests that our model is more accurate. Moreover, the Pearson's correlation between predicted $\text{VO}_{2\text{peak}}$ and the highest measured VO_2 value is higher for the Tobit model ($\rho = 0.78$, 95% CI 0.61–0.84) than for the ST calculator ($\rho = 0.66$, 95% CI 0.46–0.76).

Discussion

In this cross-sectional study, we developed an equation (by using an already validated step test) to predict $\text{VO}_{2\text{peak}}$ in a large panel of normal weight, overweight and obese children. In addition, we found that the oxygen consumption and the $\text{VO}_{2\text{peak}}$ determined in our study corresponded

fairly to those published in the literature. Consequently, both aims of our study were achieved.

The continuous indirect calorimetric and heart rate measurements on a large sample of children and adolescents (a total of 169) during a step test protocol allowed us to construct a prediction equation of oxygen consumption at each exercise intensity (stage), if the gender, age and BMI z-score of the children are known. Based on the oxygen consumed and the heart rate at each exercise intensity, it was possible to determine, by extrapolation to the maximum heart rate ($220 - \text{age}$), the peak oxygen consumption of children with different ages and BMI z-scores. This estimate could be made with use of only a bench and a device to measure heart rate. In summary, our method estimates oxygen consumption at each stage level of a submaximal exercise and then predicts $\text{VO}_{2\text{peak}}$ by extrapolating the heart rate/ VO_2 relationship to maximum heart rate.

Oxygen consumption: Our prediction equation for submaximal exercise confirmed earlier findings that boys have a higher oxygen consumption than girls [28–30]. This difference has been found throughout childhood or only during adolescence, depending on the study. Moreover, our study showed lower oxygen consumption per unit of body weight by obese participants during exercise than by their lean counterparts, suggesting a lower energy cost of this activity. This result is surprising, but compatible with some, but not all, results published in the literature in the field of human locomotion [31]. Further research is clearly needed in order to better understand this issue. Furthermore, when we used the equation developed in the present study to predict VO_2 for young lean men (age 22 years, BMI z-score 0), we found results fairly similar to those of the ST calculator and Margaria et al. [14, 15] (see table 4).

Peak oxygen consumption: In accordance with the results published in the literature [29, 32, 33], we observed that $\text{VO}_{2\text{peak}}$ of obese children, expressed per unit of body weight, was lower than those of normal weight children.

It appears that the highest measured VO_2 did not really reach the predicted $\text{VO}_{2\text{peak}}$ values (see fig. 3), even in the 59 children who fulfilled the maximal exercise criteria (85% of maximum heart rate and respiratory quotient over 1.0). These results may be due to a relative “low” maximal criteria limit, i.e., individuals who did not reach $\text{VO}_{2\text{peak}}$ were selected. It may also be possible that children (especially obese individuals) stopped exercising before reaching their maximal oxygen consumption as a result of coordination problems. On the other hand, some children may have reached their $\text{VO}_{2\text{peak}}$ but

their predicted maximum heart rate was overestimated. This is supported by the findings of earlier studies that reported that “real” maximal heart rate was 7 (SD 8) to 10 (SD 8) beats per minute less than the predicted maximal heart rate ($220 - \text{age}$) [34, 35]. Thus, at least a fraction of the difference between both “real” and predicted maximal heart rate in our study i.e. 18 (SD 9) beats per minute ($n = 59$), may be explained by this “overestimation” of the predicted heart rate in children.

It appears that the prediction equation of our study slightly overestimates VO_2peak , but the exact value of this small difference remains to be investigated more thoroughly. This can be explained by the fact that the highest value of VO_2 determined with use of a “second criterion” (e.g. respiratory quotient) to assess whether VO_2peak is reached, may probably underestimate VO_2peak [20, 21, 36]. It must be kept in mind that our prediction equation of VO_2peak takes into account age, BMI and gender, which certainly improve the accuracy of the results. Finally, we found a Pearson coefficient of 0.78 between the predicted VO_2peak and the highest measured VO_2 , a coefficient which is within the range of those observed from equations prediction of VO_2max from submaximal exercises found in adults, i.e., between 0.57 and 0.92 [37].

From our results we can say that the ST calculator should not be used in children for several reasons. First, we demonstrated that, in this population, the VO_2 predicted by the calculator was not reliable, as there was a wide variation between subjects at each stage. Secondly, it takes into account neither gender, age, nor body composition, which have been shown to be associated with maximal oxygen consumption. This study has several strengths and limitations. We explored a large number of children with wide ranges of BMI and of both genders, allowing generalisation of our equation to a wide population. However, we performed neither test-retest for reproducibility of this test, which is nevertheless known to be reproducible [15, 16], nor a standard maximal test such as the bike or treadmill test. However, the step test is known to be reliable [16]. Furthermore, we did not evaluate the role of body composition (fat mass and lean body mass) in the evaluation of oxygen consumption and, consequently, its use in the equation. However, part of the difference in body composition variation has been addressed with the use of gender, age and BMI in the equation. Indeed, the BMI is easier and cheaper to obtain in clinical practice than body composition, and a good correlation has been found between the two [38]. Sexual maturation was not been evaluated

in our study, but its influence on aerobic capacity remains controversial. For instance, some studies [27, 39], but not all [23], concluded that the increase in VO_2peak during growth was mostly explained by changes in body composition/dimensions. Moreover, after adjustment for age, weight and height, the testosterone concentration was not related to VO_2peak in boys [27]. In addition, the obese children were slightly taller than their normal counterparts of similar age, which confirms what is already known [40]. However, we do not think that this difference had an impact on our results, as height was included in the prediction equation. Finally, in our study, a maximal test, according to common criteria, could not be obtained from all participants, probably because of mechanical limitations at higher stages that necessitated good coordination. It underlines the fact that the step test was designed to be a submaximal test and that a maximal test is difficult to perform, especially in obese children.

We conclude that this study allowed the development of a valid equation to predict peak oxygen consumption during a submaximal Chester step test, in both lean and obese children. It underlines the necessity to take into account gender and BMI, in addition to age and intensity level, as girls and obese children have lower cardiorespiratory fitness.

Acknowledgements

We thank the participants for volunteering for the study, Patricia Pellissier (secretary) and the “Institut de Recherche en Réadaptation” for their assistance. Nathalie Farpour-Lambert is currently in the Obesity Prevention and Care Program “Contrepoids”, Service of Therapeutic Education for Chronic Diseases, Department of Community Medicine and Primary Care, University Hospitals of Geneva and University of Geneva, Switzerland

Financial disclosure

This study was supported financially by the “Délégation vaudoise de la Loterie Romande”, the “Commission de gestion du fonds cantonal de promotion de la santé” and the Geneva University Hospitals “Contrepoids” Research Funds. The work was independent of the funding.

Competing interests

The authors have no conflicts of interest to declare.

Correspondence:

Albane Maggio, MD
Paediatric Obesity Consultation
Service of Paediatric Specialties
Department of Child and Adolescent
University Hospital of Geneva
rue Willy-Donzé 6
CH-1211 Geneva
albane.maggio[at]hcuge.ch

References

- 1 Lobstein T, Baur L, Uauy R; IASO International Obesity TaskForce. Obesity in children and young people: a crisis in public health. *Obes Rev.* 2004;5(Suppl 1):4–104. [PubMed http://dx.doi.org/10.1111/j.1467-789X.2004.00133.x](http://dx.doi.org/10.1111/j.1467-789X.2004.00133.x)
- 2 Reilly JJ, Kelly J. Long-term impact of overweight and obesity in childhood and adolescence on morbidity and premature mortality in adulthood: systematic review. *Int J Obes.* 2011;35(7):891–8. [PubMed http://dx.doi.org/10.1038/ijo.2010.222](http://dx.doi.org/10.1038/ijo.2010.222)
- 3 Waters E, de Silva-Sanigorski A, Hall BJ, Brown T, Campbell KJ, Gao Y, et al. Interventions for preventing obesity in children. *Cochrane Database Syst Rev.* 2011;12(12):CD001871. [PubMed http://dx.doi.org/10.1002/s40279-014-0193-7](http://dx.doi.org/10.1002/s40279-014-0193-7)
- 4 Vasconcellos F, Seabra A, Katzmarzyk PT, Kraemer-Aguiar LG, Bouskela E, Farinatti P. Physical activity in overweight and obese adolescents: systematic review of the effects on physical fitness components and cardiovascular risk factors. *Sports Med.* 2014;44(8):1139–52. [PubMed http://dx.doi.org/10.1093/eurheartj/ehu527](http://dx.doi.org/10.1093/eurheartj/ehu527)
- 5 Höglström G, Nordström A, Nordström P. High aerobic fitness in late adolescence is associated with a reduced risk of myocardial infarction later in life: a nationwide cohort study in men. *Eur Heart J.* 2014;35(44):3133–40. [PubMed http://dx.doi.org/10.1093/eurheartj/ehu527](http://dx.doi.org/10.1093/eurheartj/ehu527)
- 6 Shephard RJ, Allen C, Benade AJ, Davies CT, Di Prampero PE, Hedman R, et al. The maximum oxygen intake. An international reference standard of cardiorespiratory fitness. *Bull World Health Organ.* 1968;38(5):757–64. [PubMed http://dx.doi.org/10.1097/00005768-200004000-00021](http://dx.doi.org/10.1097/00005768-200004000-00021)
- 7 Cunningham DA, van Waterschoot BM, Paterson DH, Lefcoe M, Sangal SP. Reliability and reproducibility of maximal oxygen uptake measurement in children. *Med Sci Sports.* 1977;9(2):104–8. [PubMed http://dx.doi.org/10.1097/00005768-200004000-00021](http://dx.doi.org/10.1097/00005768-200004000-00021)
- 8 Figueroa-Colon R, Hunter GR, Mayo MS, Aldridge RA, Goran MI, Weinsier RL. Reliability of treadmill measures and criteria to determine VO₂max in prepubertal girls. *Med Sci Sports Exerc.* 2000;32(4):865–9. [PubMed http://dx.doi.org/10.1123/pes.7.1.49](http://dx.doi.org/10.1123/pes.7.1.49)
- 9 Turley K, Rogers D, Harper K, Kujawa K, Wilmore J. Maximal Treadmill Versus Cycle Ergometry Testing in Children: Differences, Reliability, and Variability of Responses. *Pediatr Exerc Sci.* 1995;7(1):49–60. [PubMed http://dx.doi.org/10.1123/pes.7.1.49](http://dx.doi.org/10.1123/pes.7.1.49)
- 10 Bar-Or O. Physiologic Responses to Exercise of the Healthy Child. In: *Pediatric sports medicine for the practitioner.* New York: Spring-Verlag, 1983, p. 1–65.
- 11 Krahenbuhl GS, Skinner JS, Kohrt WM. Developmental aspects of maximal aerobic power in children. *Exerc Sport Sci Rev.* 1985;13:503–38. [PubMed http://dx.doi.org/10.1249/00003677-198500130-00015](http://dx.doi.org/10.1249/00003677-198500130-00015)
- 12 Villagra F, Cooke CB, McDonagh MJ. Metabolic cost and efficiency in two forms of squatting exercise in children and adults. *Eur J Appl Physiol Occup Physiol.* 1993;67(6):549–53. [PubMed http://dx.doi.org/10.1007/BF00241653](http://dx.doi.org/10.1007/BF00241653)
- 13 Esmaeilzadeh S, Ebadollahzadeh K. Physical fitness, physical activity and sedentary activities of 7 to 11 year old boys with different body mass indexes. *Asian J Sports Med.* 2012;3(2):105–12. [PubMed http://dx.doi.org/10.5812/asjms.34709](http://dx.doi.org/10.5812/asjms.34709)
- 14 Margaria R, Aghemo P, Rovelli E. Indirect determination of maximal O₂ consumption in man. *J Appl Physiol.* 1965;20(5):1070–3. [PubMed http://dx.doi.org/10.1152/jap.1965.20.5.1070](http://dx.doi.org/10.1152/jap.1965.20.5.1070)
- 15 Buckley JP, Sim J, Eston RG, Hession R, Fox R. Reliability and validity of measures taken during the Chester step test to predict aerobic power and to prescribe aerobic exercise. *Br J Sports Med.* 2004;38(2):197–205. [PubMed http://dx.doi.org/10.1136/bjism.2003.005389](http://dx.doi.org/10.1136/bjism.2003.005389)
- 16 Watkins J. Step tests of cardiorespiratory fitness suitable for mass testing. *Br J Sports Med.* 1984;18(2):84–9. [PubMed http://dx.doi.org/10.1136/bjism.18.2.84](http://dx.doi.org/10.1136/bjism.18.2.84)
- 17 WHO Multicentre Growth Reference Study Group. WHO Child Growth Standards: Length/height-for-age, weight-for-age, weight-for-length, weight-for-height and body mass index-for-age: Methods and development. Geneva: World Health Organization; 2006. 312 pages.
- 18 Culpepper MI, Francis KT. An anatomical model to determine step height in step testing for estimating aerobic capacity. *J Theor Biol.* 1987;129(1):1–8. [PubMed http://dx.doi.org/10.1016/S0022-5193\(87\)80199-6](http://dx.doi.org/10.1016/S0022-5193(87)80199-6)
- 19 Sykes K. Capacity assessment in the workplace: a new step test. *Occup Health (Lond).* 1995;47(1):20–2. [PubMed http://dx.doi.org/10.1136/bjism.2009.063180](http://dx.doi.org/10.1136/bjism.2009.063180)
- 20 Barker AR, Williams CA, Jones AM, Armstrong N. Establishing maximal oxygen uptake in young people during a ramp cycle test to exhaustion. *Br J Sports Med.* 2011;45(6):498–503. [PubMed http://dx.doi.org/10.1136/bjism.2009.063180](http://dx.doi.org/10.1136/bjism.2009.063180)
- 21 Day JR, Rossiter HB, Coats EM, Skasick A, Whipp BJ. The maximally attainable VO₂ during exercise in humans: the peak vs. maximum issue. *J Appl Physiol* (1985). 2003;95(5):1901–7. [PubMed http://dx.doi.org/10.1152/jap-physiol.00024.2003](http://dx.doi.org/10.1152/jap-physiol.00024.2003)
- 22 Tobin J. Estimation of relationships for limited dependent variables. *Econometrica.* 1958;26(1):24–36. [PubMed http://dx.doi.org/10.2307/1907382](http://dx.doi.org/10.2307/1907382)
- 23 Armstrong N, Welsman JR. Peak oxygen uptake in relation to growth and maturation in 11- to 17-year-old humans. *Eur J Appl Physiol.* 2001;85(6):546–51. [PubMed http://dx.doi.org/10.1007/s004210100485](http://dx.doi.org/10.1007/s004210100485)
- 24 Harrell F. Regression modeling strategies: with applications to linear models, logistic and ordinal regression, and survival analysis. New York: Springer; 2015.
- 25 Carroll RJ, Ruppert D, Stefanski LA. Regression Calibration. In: *Measurement Error in Nonlinear Models*, edited by Hall C. New York: 1995, p. Chapter 4.
- 26 Macsween A. The reliability and validity of the Astrand nomogram and linear extrapolation for deriving VO₂max from submaximal exercise data. *J Sports Med Phys Fitness.* 2001;41(3):312–7. [PubMed http://dx.doi.org/10.1007/s004210100485](http://dx.doi.org/10.1007/s004210100485)
- 27 Fahey TD, Del Valle-Zuris A, Oehlsen G, Trieb M, Seymour J. Pubertal stage differences in hormonal and hematological responses to maximal exercise in males. *J Appl Physiol.* 1979;46(4):823–7. [PubMed http://dx.doi.org/10.1249/00003677-199401000-00016](http://dx.doi.org/10.1249/00003677-199401000-00016)
- 28 Armstrong N, Welsman JR. Assessment and interpretation of aerobic fitness in children and adolescents. *Exerc Sport Sci Rev.* 1994;22(1):435–76. [PubMed http://dx.doi.org/10.1249/00003677-199401000-00016](http://dx.doi.org/10.1249/00003677-199401000-00016)
- 29 Butte NF, Puyau MR, Adolph AL, Vohra FA, Zakeri I. Physical activity in nonoverweight and overweight Hispanic children and adolescents. *Med Sci Sports Exerc.* 2007;39(8):1257–66. [PubMed http://dx.doi.org/10.1249/mss.0b013e3180621fb6](http://dx.doi.org/10.1249/mss.0b013e3180621fb6)
- 30 Dencker M, Thorsson O, Karlsson MK, Lindén C, Eiberg S, Wollmer P, et al. Gender differences and determinants of aerobic fitness in children aged 8–11 years. *Eur J Appl Physiol.* 2007;99(1):19–26. [PubMed http://dx.doi.org/10.1007/s00421-006-0310-x](http://dx.doi.org/10.1007/s00421-006-0310-x)
- 31 Zelik KE, Kuo AD. Human walking isn't all hard work: evidence of soft tissue contributions to energy dissipation

- and return. *J Exp Biol.* 2010;213(Pt 24):4257–64. [PubMed](#) <http://dx.doi.org/10.1242/jeb.044297>
- 32 Maggio AB, Hofer MF, Martin XE, Marchand LM, Beghetti M, Farpour-Lambert NJ. Reduced physical activity level and cardiorespiratory fitness in children with chronic diseases. *Eur J Pediatr.* 2010;169(10):1187–93. [PubMed](#) <http://dx.doi.org/10.1007/s00431-010-1199-2>
- 33 Zanconato S, Baraldi E, Santuz P, Rigon F, Vido L, Da Dalt L, et al. Gas exchange during exercise in obese children. *Eur J Pediatr.* 1989;148(7):614–7. [PubMed](#) <http://dx.doi.org/10.1007/BF00441512>
- 34 Machado FA, Denadai BS. Validity of maximum heart rate prediction equations for children and adolescents. *Arq Bras Cardiol.* 2011;97(2):136–40. [Article in English, Portuguese, Spanish] [PubMed](#) <http://dx.doi.org/10.1590/S0066-782X2011005000078>
- 35 Mahon AD, Marjerrison AD, Lee JD, Woodruff ME, Hanna LE. Evaluating the prediction of maximal heart rate in children and adolescents. *Res Q Exerc Sport.* 2010;81(4):466–71. [PubMed](#) <http://dx.doi.org/10.1080/02701367.2010.10599707>
- 36 Poole DC, Wilkerson DP, Jones AM. Validity of criteria for establishing maximal O₂ uptake during ramp exercise tests. *Eur J Appl Physiol.* 2008;102(4):403–10. [PubMed](#) <http://dx.doi.org/10.1007/s00421-007-0596-3>
- 37 Evans HJ, Ferrar KE, Smith AE, Parfitt G, Eston RG. A systematic review of methods to predict maximal oxygen uptake from submaximal, open circuit spirometry in healthy adults. *J Sci Med Sport.* 2015;18(2):183–8. [PubMed](#)
- 38 Pietrobelli A, Faith MS, Allison DB, Gallagher D, Chiumello G, Heymsfield SB. Body mass index as a measure of adiposity among children and adolescents: a validation study. *J Pediatr.* 1998;132(2):204–10. [PubMed](#) [http://dx.doi.org/10.1016/S0022-3476\(98\)70433-0](http://dx.doi.org/10.1016/S0022-3476(98)70433-0)
- 39 Armstrong N, Williams J, Balding J, Gentle P, Kirby B. The peak oxygen uptake of British children with reference to age, sex and sexual maturity. *Eur J Appl Physiol Occup Physiol.* 1991;62(5):369–75. [PubMed](#) <http://dx.doi.org/10.1007/BF00634975>
- 40 He Q, Karlberg J. Bmi in childhood and its association with height gain, timing of puberty, and final height. *Pediatr Res.* 2001;49(2):244–51. [PubMed](#) <http://dx.doi.org/10.1203/00006450-200102000-00019>